

# Start Final Drive for High Votes in \$3,500 Contest

With only three more days remaining in the first and largest vote period of The Northville Record and Novi News \$3,500 Subscription Contest, the final drive will be made by contestants to get every available subscription to secure the high vote credits.

Hard and persistent campaigning from now until 10 o'clock Saturday night can easily mean a new 1957 Ford for one of the contestants who is working for subscriptions and votes with a determination to win over his competitors.

When the clock strikes 10 Saturday night, the first and greatest vote period of the entire contest will end. Every contestant must report in person, by phone or mail before the closing hour to get first period credit. Subscriptions mailed by people wanting to give contestants first period votes can be dropped in the post office by the closing hour. If the postmark shows that they were mailed by 10 p.m., August 24, they will count.

#### BOOST FAVORITE NOW

Subscribers and readers of this newspaper who have been following the progress of contestants in this race

can give their favorites the biggest boost toward victory by giving subscriptions before the final hour of this important period.

When the votes are in and counted this week, there is little doubt about them determining the real contenders for the largest prizes.

Saturday's results will show who is in to win and who is merely wishing he could win without making any effort to do it. They will show who are the most resourceful, most energetic, hardest working and most deserving contestants in the race.

The most successful people of today are the ones who realize that success comes through doing just a little better job than your competitors. A contest is no exception. It takes campaigning and planning to be a contest winner. All contestants who make an earnest effort to get support will get it. The ones who lack confidence in their own ability, the ones who find reasons for being unable to accomplish anything, and the ones who think that their competitors will win anyway can't hope for success.

#### MAKE PROMISE GOOD

Several contestants have been accepting promises of subscriptions. All who make an effort to make these promises good will make a good showing in the standings next week.

If you have promised your subscription to some contestant do it this week. It means more votes. When you make your promise good you encourage your favorite to do more than his or her competitors and win this interesting competition. Making that promise good NOW will also give your favorite more time to get other subscriptions and other promises.

#### GET EXTRA VOTES

When the contest was announced entrants were given an opportunity to pile up a huge vote total by turning in \$30 clubs of subscriptions to take up Opportunity Club Coupons. This coupon is now worth 75,000 votes for each \$30 worth of subscriptions. Its vote value drops 25,000 Saturday and continues to drop 25,000 each week until it is worthless. Every \$30 club turned in NOW is a BIG STEP toward winning the highest honors.

#### HELP WITH CLUBS

All readers with favorites in the race who are trying to complete \$30 clubs can show their interest NOW. Get in touch with the contestants of your choice and place your subscriptions.

When contestants try to get your subscription during the next few days, they are trying to complete \$30 clubs to get extra vote credit. In addition to clubs being worth more credit, your subscription will yield from 2,000 to 10,000 more votes this week.

#### BEST TIME FOR WORK

Contestants who have been lagging along, getting barely enough subscriptions to make a report, will find the remaining days of this first important period an excellent time to get subscriptions. Time is getting short for the big vote credits. Public interest is aroused. Subscriptions will be easier to get now than at any other time during the remainder of the contest. This is the time for contestants to show what they are capable of doing. A few hours spent in honest effort now will surprise and delight contestants.

## Standings Tighten In Race for Votes

With the largest vote period of The Northville Record and Novi News \$3,500 Subscription Contest scheduled to end at 10 o'clock Saturday night, contestants are closely bunched and a furious battle is being waged for every available subscription to get the high vote credits toward winning the new Ford, \$500 cash and other prizes.

What a race! Not a contestant has a vote lead that could not be wiped out by a competitor. The contestant with the lowest vote can forge to the front this week!

#### How They Reported Last Week

Miss Dolores Teshka polled the largest vote for the week and gained from 5th to 1st place. Joe Krith turned in the 2nd high vote and held 3rd place. The third high vote was credited to Mrs. Lois McAllister and she dropped from 4th to 5th in total votes. Mrs. Russell Button had the 4th high vote for the week and dropped from 1st to 2nd place. The 5th high vote was credited to Mrs. Paul Folino and she dropped from 2nd to 4th place. Coming in 6th high was Mrs. Kenneth Cook. She gained from 8th to 6th in total votes. Mrs. John Chambers had the 7th high vote and gained from 15th to 9th place.

Mrs. Richard Kay polled the 8th high vote and dropped from 6th to 7th place. A new entrant, Mrs. Mary Wallace, turned in the 9th high vote. Another new entrant, Mrs. Ralph Foreman, Sr., had the 10th high vote for the week. Sidney Junod, who just got started, came in 11th. The 12th high vote was credited to Mrs. E. A. Kampmann, 13th to Mrs. Louis Chismark, 14th to Mrs. Pat McGuire, 15th to Jeffery Horne, 16th to Mrs. Wallace Doan, 17th to Mrs. William Lemon, 18th to Mrs. Ray McKnight, 19th to Mrs. Ruby Koester, 20th to Mrs. Mary Ware, 21st to Mrs. Mildred Lyke, 22nd to Mrs. Robert Hansor, 23rd to Mrs. Earl Brady and 24th to Leo Harrowood. Other contestants tied with votes on one subscription.

Comparative vote standings after Saturday, August 17, are shown below. This is not an accurate or actual vote count, but shows ACTUAL POSITIONS.

#### NORTHVILLE AREA LEADERS — DISTRICT ONE

Miss Dolores Teshka, 215 W. Main St.	1,575,000
Joe Krith, 370 Rayson Ave.	1,567,000
Mrs. Paul Folino, 350 E. Cady	1,564,000
Mrs. Lois McAllister, 15674 Lakeside Dr.	1,562,000
Mrs. Richard Kay, 629 W. Main St.	1,537,000
Mrs. E. A. Kampmann, 47100 Stratford Ct.	1,531,000
Jerry E. Horne, 16781 Negaunee Rd.	1,520,000
Mrs. Pat McGuire, 240 Orchard St.	1,517,000
Mrs. Ray McKnight, 302 Yerkes	1,512,000
Sidney Junod, 145 Walnut St.	1,193,500
Mrs. Glenn E. Deibert, 9825 Napier Rd.	1,118,000
Mrs. Ralph Foreman, Sr., 5050 W. 7 Mile Rd.	1,025,000
Mrs. Wm. D. Lemon, 9760 W. 7 Mile Rd.	1,010,000
Mrs. Ruby Koester, 42780 8 Mile Rd.	518,500
Mrs. Mary Ware, 229 Hutton St.	517,500
Mrs. Mildred Lyke, 9809 6 Mile Rd., Salem	197,000

#### NOVI AREA LEADERS — DISTRICT TWO

Mrs. Russell Button, 44109 Grand River	1,570,000
Mrs. Kenneth Cook, 44239 12 Mile, Walled Lake	1,537,500
Mrs. John Chambers, 49085 Pontiac Trail, Wixom	1,523,000
Mrs. Louis Chismark, 23980 E. LeBost	1,518,000
Mrs. Wallace Doan, 44480 Grand River	1,490,000
Mrs. Mary M. Wallace, 46103 Grand River	1,041,000
Mrs. Robert Hansor, 26545 Taft Rd.	170,000
Leo Harrowood, 43382 Grand River	159,500
Mrs. Joseph Gardella, 46235 11 Mile Rd.	108,500
Mrs. Earl J. Brady, 40960 Holly Dale	104,000
Julius Wall, Jr., 48197 West Rd., Wixom	51,500
Wesley McAtee, 3023 W. Maple, Walled Lake, Wixom	40,000

#### LIST DOWN TO REAL CAMPAIGNERS

The contestant list is now down to the most ambitious, most resourceful, most deserving contestants. It has narrowed down to those who will never say "die" . . . to those who know that they are just as capable as anyone else and have the courage to prove it.

Today is here for action. Waiting until next week to "go after" those subscriptions means taking a loss in vote credits. This is the week to get the winning votes and let other contestants wait to see how they get along. Real effort now will be worth all the regrets in the world after the contest is ended. Work! Win!

## Service Commission OK's Telephone Rate Increase

Telephone rates in the Northville-Novi area will go up as a result of action by the Public Service Commission last week.

According to John Kamego, area manager for Michigan Bell Telephone company, the increase will affect residence service, business lines and private switchboard trunklines.

Application for the increase was made last winter by the company. It followed a controversy in Northville at which time city councilmen were protesting poor service in the area. Company officials promised that a mobile dial exchange in Novi would relieve switchboard congestion in Northville. The exchange is scheduled to open within two weeks. Construction of a dial exchange to serve the whole area is now underway in Northville and will be ready

for operation next August.

Actual rate increases are: Business—\$1 per month (one party), 50c per month (two party), 25c per month (rural) and \$1.50 per month (PBX trunkline); Residential—25c per month (one party), 55c per month (two party), 35c per month (four party), and 25c per month (rural).

In commenting upon the Commission's order, the company termed it "disappointing because it falls short of providing for our increased costs of doing business."

"Even with this increase, rate changes since 1940 have raised our revenues only 31 per cent. During the same period, the prices of other goods and services have almost doubled and our own costs of providing service for each telephone have also nearly doubled," Kamego said.

## Northville School Officials Outline Registration Plans

Where did the summer go?

That's what upwards of 1,700 Northville school children began wondering this week as they noticed a buzz of activity around Northville's three schools that signified only one thing:

School will open soon.

Superintendent Russell H. Amerman confirmed their suspicions this week by announcing that the registration period will begin next Tuesday, and full-time classes will begin September 9.

The complete schedule of registration and school-opening activities:

—August 27-28 — Registration of all new students not previously registered, both grade and high school. No students.

—August 29 — new teachers report to Amerman at 9 a.m.

—September 3 — all faculty members report to community building at 9 a.m. for first meeting. No students.

—September 4 — First grade through ninth grade students report for half day of school (8:30-12:00). Buses will make regular runs at 7:30 and noon. Teachers meet in afternoon.

—September 5 — The following students report for half-day of school (8:30-12:00): forenoon kindergarten, grades 1 through 6, and grades 10-12. Buses will make regular runs. Teachers will meet in afternoon, followed by annual faculty and school board picnic at 6:30 p.m.

—September 6 — Afternoon kindergarten students and all students in grades 1-12 report for half day of school (8:30-12:00). Buses will make regular runs. Teachers meeting in afternoon.

—September 9 — First full day of classes for all students: 8:30 a.m.-3:30 p.m.

Amerman noted that information letters have been mailed to parents of all prospective kindergarten students, telling them when and how to register. If any parent has not received such a letter, he said, extra copies are available at his office.

Further details of the registration and school-opening program appear in a school board announcement on page 7. A complete schedule of bus runs is on page 15. For football practice schedule, see sports pages.

## Hit-Run Driver Caught by Police

Charged with a hit-run crash into a car Friday night in Northville, Curtis William McCown of Plymouth was fined a total of \$125 by Judge E. M. Bogart Monday.

McCown, 17, hit the parked car of Russell Knight, 795 Carpenter street, which was parked on Carlyle. The accident was reported by a neighbor who described the car to police.

According to police, McCown was seen approximately two hours after the accident and chased from Main and Center in Northville at speeds up to 105 miles per hour to N. Territorial road, where the car was lost.

McCown was apprehended and arrested Saturday evening. He was fined \$25 on hit-run charges and \$100 for reckless driving.



ENGINEER AND JUNIOR ASSISTANT — Harold Penn, newly-appointed Northville city engineer, seeks the advice of his son, Stephen, 1, during a routine inspection of blueprints of the city sewer system. Penn, partner in a Detroit engineering firm, is now serving Northville on a retainer basis. His first job is to design a storm sewer for the new Northville high school.

# The Northville Record

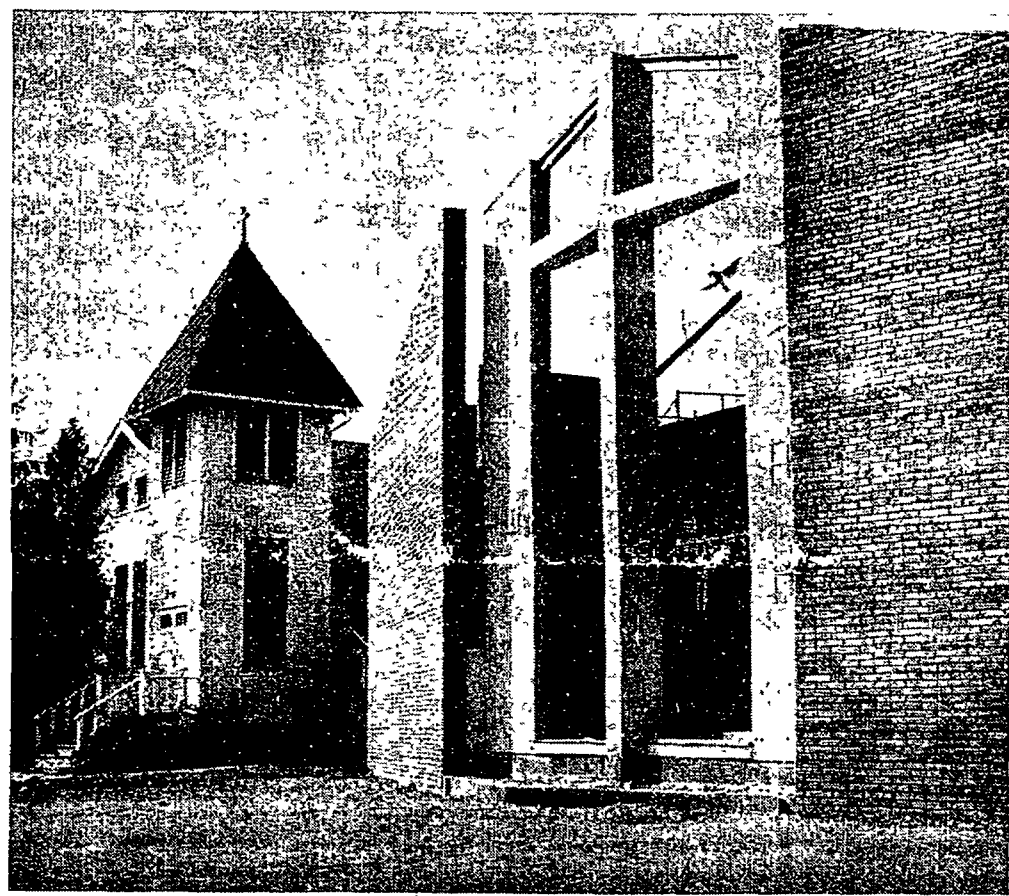
IF IT'S NEWS...AND IT HAPPENS IN NORTHVILLE...YOU CAN READ IT IN THE RECORD

Volume 87, Number 13, 16 Pages

Northville, Michigan, Thursday, August 22, 1957

10c Per Copy, \$3.00 Per Year In Advance

## EXPECT FUEL GAS RELEASE



THE OLD AND THE NEW — Next to the white frame building that has served Our Lady of Victory parishioners for many years, a striking new church is rising fast. The new church, paid for through a recent building fund drive, is expected to be finished within the next two months.

A request by the Consumers Power company for approval to service 20,000 additional customers with natural gas for space heating was made Tuesday to the Michigan Public Service Commission.

The request was expected to bring almost immediate service to the oldest of the 700 applications desiring fuel gas in the Northville-Novi area. Consumers Power has had no releases since 1955 and currently has approximately 180,000 unfilled applications on file.

William Whitfield, district manager for the company, stated that applicants who had been waiting the longest would be connected first.

Lack of gas heating permits came in for criticism by the Northville city council last November. Councilmen adopted a resolution protesting to the Public Service Commission on the lack of fuel gas for home heating use.

In an official release from Consumers Tuesday, President Dan E. Karn stated that the present shortage of gas in the company's service area would be relieved "but only to a minor extent". He pointed out that the company was still seeking to obtain larger additional supplies of gas from the fields in the southwestern states.

Purchase by Consumers of the gas wells in the Overisel gas field in Allegan county made the request for additional connections possible. The field has 38 producing wells. Actual transfer of ownership has not yet taken place but an agreement has been made with the Taggart company, present owner. Taggart is well known in Northville for drilling enterprises in this area.

Consumer plans to build a 12-inch pipeline from the field to the east side of Kalamazoo, giving that city a second source of gas supply. Use of Overisel gas in the Kalamazoo area will release other gas for use elsewhere in the 29 counties where Consumers supplies gas service.

## City, Schools Mull Utility Costs

City and school authorities were scheduled to meet Wednesday evening to iron out final details for sharing costs of sewer and water facilities for the proposed new high school.

Indications that the two bodies did not see eye to eye on the project were revealed Monday evening at the meeting of the city council.

A report by John Robertson, city manager, and Harold Penn, city engineer, that school authorities and architects were in disagreement on how costs of the off-site utility project should be shared brought sharp replies from councilmen.

They pointed to a joint meeting held June 27 and insisted that the board had agreed to pay "all costs required to connect to the city water system and to handle the storm and sanitary sewer program off the high school site."

"It's a matter of dollars and cents and not possible for the city to do any more under our budget," stated Councilman Malcolm Allen. John Canterbury chimed in with Allen

and added that he believed the situation was clearly understood at the June 27 meeting.

Specifically, Penn told councilmen that the project of providing sanitary and storm sewer and water hook-up would cost an estimated \$28,842. He stated that school participation would amount to \$22,545 and city \$6,297. "Architects for the school suggested a 60-40 per cent split," Penn added.

The project would provide an eight-inch sanitary sewer line from the school site south on East street to present facilities. The storm sewer would extend from the school down East street through an easement on the Lutheran church property to the creek. This line would be 21 inches and expanding to 27 inches at the outlet. A six-inch water connection would be made to an existing 8-inch line on Baseline road.

Nelson Schrader, school board president, stated Tuesday that he did not believe that it would be difficult for the two bodies to reach

an agreement. He added, however, that storm sewers were the responsibility of the city, and not the school. "The school is obligated only to pay for the sanitary sewer and water installations," he pointed out. The storm sewer project represents more than \$15,000 of the total cost.

Schrader said the school board hoped to break ground on the \$24 million school in November. "We're still working out final details in weekly meetings with architects but expect plans to be ready for advertising of bids by October," he stated.

Located on a 50-acre site between North Center street and Taft road, main entrance to the school will be from Center street. Additional traffic on North Center from Baseline to the school entrance has also been a source of concern to the city. Some hope exists that county authorities may step in to improve the hilly, unpaved road as part of concession to the school board for purchase of property for the proposed Eight Mile road cut-off.

In other business slated to come before the school board on Wednesday evening action was expected to be taken on setting the school tax rate for the coming year. A sharp increase in the assessed valuation of the school district will probably permit the board to apply a millage slightly lower than the 22.45 of last year and still obtain needed additional revenue.

The board will also consider a budget for the new year and open bids for \$37,000 of tax anticipation notes. The latter is needed by the board for operation expenses. A loss of approximately \$50,000 in state aid plus an earlier \$50,000 issue of tax anticipation notes along with the new notes faces the board in preparation of its budget. Debt service millage would probably be lowered, however, by retirement of 1949 obligations last October.

## Newspaper Strike In Fifth Day

The Detroit newspaper strike went into its fifth day Wednesday, leaving hundreds of Northville area readers with only a thin trickle of news from the rest of the world.

Originating when mailers walked off the job at the Detroit News Saturday, the shutdown quickly spread to the Detroit Times and Detroit Free Press.

The three papers operate under an agreement whereby a strike against one is considered a strike against all.

Representatives of the newspapers and of other unions with which they have contracts were to meet again Wednesday to work on a settlement.

The newspapers have appealed to James Hoffa, Teamsters president-apparent, to order his union to cross the mailers' picket lines and pick up papers for delivery. It is believed that this would break the strike — which the newspapers call "illegal" because the mailers union is not recognized.

Though The Record this week has no special coverage to offset the present news shortage, plans may be made to provide certain services to Record readers next week if the strike appears headed for a long duration.

## Rev. Richards to Speak At Citizenship Banquet

September 11 is the day when Northville's newly registered voters — both those who have turned 21 since last September and naturalized citizens — will be honored at the annual Citizenship dinner by the Northville Coordinating council and three local service clubs.

Chairman for this year's affair is A. Russell Clarke. Committeemen include John Canterbury, Leland Smith, Carl Johnson and George L. Clark.

The banquet is a yearly undertaking of the coordinating council, a date set aside to honor new voters with a dinner and a certificate of their citizenship status.

Those who will be eligible for the dinner, both the "21ers" and newly naturalized citizens — are invited to submit their names to Northville post office box 277.

Reverend Richards is himself a naturalized citizen, having been born in Wales. He is noted in this



# "September Symphony" Planned by Garden Club

A "September Symphony" will be ready for the enjoyment and pleasure of Northville the fourteenth of next month.

That's the date of the annual flower show of the Northville branch of the National Farm and Garden association, to be held in the community building.

General chairman for the affair is Mrs. Edwin E. Mueller, who says this year's show promises to be one of the most rewarding for visitors.

Garden club committees have been busy working on aprons and unique Christmas wreathes that will be for sale. The aprons will be of two

styles, a denim cobbler work apron and a kitchen apron.

Shiny tin can tops are the main item that goes into creating the sparkling wreathes. Work groups, like the one shown above have been gathering to cut the metal discs into designs with tin snips.

Imported bulbs from Holland will be on sale at the show, including tulips, daffodils and narcissus. Among them are the Mt. Hood daffodil (pure white); double peony flower tulips in rose, white, yellow, and red and yellow stripe; Darwin tulip in pink, violet and white; cottage tulips in yellow; early single tulip in red and white; and French paper narcissus, eranthus and snow-drop.

In the event of a dock strike in New York so that the bulbs do not reach Northville in time for the show, orders will be taken for delivery later.

There will also be many varieties of ground cover for sale.

Prospective exhibitors who wish to make reservations for their class must do so before September 7 with Mrs. R. D. Merriam, Northville 1274. Mrs. Merriam will also take reservations from children, under 15 years, who wish to enter exhibits.

Entries of dried leaves, mounted and identified, must be entered with Mrs. F. S. Jennings. Children who wish to enter this class must register soon, as there will be a limit of 20 entries.

A complete list of classes of entry will be published in the Record next week.

Chairmen of the nine work groups are Mrs. Albert Northup, Mrs. F. S. Jennings, Mrs. G. H. Cummings, Mrs. W. L. Howard, Mrs. D. Hurd Clark, Mrs. Orson Atchinson, Mrs. N. K. Pattison, Mrs. Arlo Hauger and Mrs. Robert Niemi.

Ticket chairman is Mrs. John Burkman.

The labor in Labor Day driving stems mostly from starting too late and then traveling too far—too fast!



UNIQUE CHRISTMAS WREATHES — Working on wreathes to be on sale at their annual flower show, "September Symphony" on September 14 are garden club members Mrs. E. V. Ellison and Mrs. Luther Rix (seated) and Mrs. David O'Leary, Mrs. John Burkman and Mrs. F. S. Jennings. The wreathes are made from tin can tops and can be trimmed with greens if desired.

## Couple Wed in Wixom Baptist Church

The First Baptist church of Wixom was the setting for the double-ring wedding ceremony of Beth Maye Woodworth of Wixom and John W. Livingston of Howell on Saturday, August 17.

Beth is the daughter of Mrs. Earl Woodworth of 49400 Pontiac Trail and the late Mr. Woodworth.

The ceremony was read by the Rev. Edmond F. Caes, Jr. before an altar decorated with all-white daisy poms and gladioli.

The bride wore a street-length dress of lace and blue ribbon with white accessories. Her bouquet was

of white daisy poms and a cascade of medium pink roses and ivy. Beth chose as her attendant Mrs. Marjorie Guhl of Livonia, her cousin. Marjorie wore a beige suit and accessories. Her bouquet was of white daisy poms and Mary-Jo roses.

John's attendant was Donald Baril of Lansing.

The bride's mother chose a navy blue crepe dress with white accessories. Her corsage was of red rose buds.

A reception in the church parlors for 200 guests followed the private ceremony.

Beth is a graduate of Eastern Michigan college at Ypsilanti. John

was graduated from Ferris Institute at Big Rapids, Michigan.

Upon their return from a trip in the Lake Superior region and Isle Royale, Mr. and Mrs. Livingston will make their home in Howell.

Mrs. Mae Henry, resident of Northville for nearly 60 years, who moved to Berkley last year, was the subject of a recent feature story in the Royal Oak Tribune. Mrs. Henry, 82, spends her time knitting afghans and other objects for the American Friends service committee, which distributes them to the needy overseas.

## about WOMEN

2—Thursday, August 22, 1957—THE NORTHVILLE RECORD

### To Represent NHS At Safety Conference

Two Northville high school representatives will attend a statewide safety conference in Battle Creek next Monday.

Principal E. V. Ellison and driver training instructor William Hensch will represent Northville at the Kellogg Center meeting, called by Gov. G. Memmen Williams.

A number of friends surprised Ruth Jean Hoysradt of Waterford road at a pot-luck birthday dinner Tuesday evening.

Phone local news items — parties, dinners, trips — or just a friendly get-together with the neighbors — to the society editor, Northville 200.

Flowers have a special meaning — beyond words

When grief strikes someone close to you, it is not easy to put into words the sympathy you feel. But the flowers you send carry a message far, far beyond words. Their beauty is a source of comfort and strength.



Lawrence Mayer

FLORIST

417 Dubuare Northville  
Phone 2392

## PRE-SEASON SPECIALS

**TRADE-IN NOW!**  
**SAVE \$30.00**

on these new  
**DUO-THERM**  
OIL HOME HEATERS  
with Automatic  
**POWER-AIR!**

Smart new Sandalwood finish! Get "living level" heat! Blower circulates heat by force. Turns itself on and off. Gives greater comfort floor to ceiling, saves up to 25% on fuel!

Come In Today! Check our **SPECIAL PRICES** on both 3-4 Room and 4-5 Room Models!

**FREE HEATING CLINIC SERVICE**

Got a heating problem? Come in and discuss it with our DUO-THERM heater specialist. We'll show you how to get the most heating comfort... how to heat any living area cheaply and efficiently.

**Northville Electric Shop**

153 East Main Street

NORTHVILLE

Phone 184

### Free Estimates

WE CARRY: METAL MOLDINGS — SINK FRAMES — FORMICA COUNTER TOPS — ASPHALT TILE — INLAID LINOLEUM — WALL TILE — PAINT — WALLPAPER.

<p>Greaseproof - Stainproof Needs No Waxing <b>VINYL 11c</b> TILE Each 16 Colors</p>	<p>Genuine - Beautiful <b>FORMICA</b> Spec. Sale <b>69c</b> Sq. Ft. Bring Measurements</p>	<p>It's New - Sparkling Pearlescent Plastic <b>WALL TILE</b> Spec. <b>29c</b> Price Sq. Ft.</p>
<p><b>JUST ARRIVED — BRAND NEW SHIPMENT</b> 9x12 Full Fashion Plastic Finish <b>LINOLEUM RUGS</b> EA. <b>\$4.95</b></p>		
<p><b>GIANT 1c</b> <b>PAINT SALE</b> Buy One Gal. — Reg. \$3.95 GET EXTRA GAL. for 1c BOTH FOR \$3.96 (White Only)</p>	<p><b>ASPHALT TILE</b> B Group All First Quality <b>\$3.95</b> Case of 80</p>	<p><b>MARBLIZED VINYL COUNTER TYPE</b> <b>29c</b> SQ. FT.</p>

**MORRIS FLOOR COVERING Co.**  
30400 GRAND RIVER AVE. FARMINGTON, MICH.  
Greenleaf 4-6868 NEXT TO DRIVE-IN THEATRE AT TUCK RD.  
OPEN THURSDAY, FRIDAY, SATURDAY UNTIL 9 P.M.

### Novi Girl Scouts To be Part of UF

Novi Girls Scouts — some 140 of them — will begin receiving support from the United Foundation Torch Drive next year.

The move stems from a recent organizational change in which the Oakland county United Fund drive was merged with the Detroit United Foundation Torch Drive.

Under the old United Fund set-up, Novi troops receive funds from a "Twenty Townships Fund" while other troops in Oakland county come under the "United Community Service."

But now, all will be under the Torch Drive.

The Girl Scout organizations are among 195 health and community services which will receive funds collected in the ninth annual Torch Drive, October 15-November 7.

"By so doing," said a spokesman, "they help not only their own organization, but many others as well, including such widely known groups as the American Red Cross, the American Cancer Society and the Michigan Heart association."

## S.L. Brader Department Store

features school clothes for boys and girls at prices that are practical for everyone.

New Shipments Are Arriving Daily.

Boy's Shirts	Boy's Dress Pants	Boy's Dress Pants	Boy's Anklets
LONG SLEEVES REGULAR AND IVY STYLE COTTON PLAID & FLANNELETTE ALL SIZES UP TO 18 <b>\$1.65 and \$1.95</b>	WASHABLE SIZES 2 TO 12 AT <b>\$2.95</b>	LARGER SIZES UP TO 18 AT <b>\$3.95</b>	SIZES UP TO 10 1/2 <b>25c to 39c</b>
Boy's Underwear	Girl's School Dresses	Girl's Blouses	Girl's Slips
HANES BRAND Briefs ..... <b>69c</b> Undershirts.. <b>59c</b>	SIZES 2 TO 12 <b>\$1.98 to \$4.98</b>	SIZES 3 TO 14 <b>\$1.98</b>	SIZES 4 TO 16 <b>69c to \$1.98</b>
Girl's Underwear	Girl's Fruit of the Loom Brand Panties	Girl's Anklets	
THE WELL-KNOWN GIBBS PANTIES SIZES 4 TO 16 AT <b>69c</b>	SIZES 2 TO 16 25c to 39c	BUSTER BROWN BRAND ALL SIZES <b>35c to 39c</b>	
GIRL'S AND BOY'S SHOES		BIG BOY SHOES	
PETERS BRAND. SIZES UP TO 3 <b>at \$4.95</b>		PETER'S WESTOVER BRAND. SIZES 3 TO 6. <b>at \$6.45</b>	

Open Monday,  
Tues. & Wed.  
from  
9 A.M. to 6 P.M.

**S. L. BRADER'S**  
**DEPARTMENT STORE**

Open Thursday,  
Friday & Saturday  
Evenings until  
9:00 P.M.

### Mrs. Hilda Sands Has Painting In U-M Exhibit

A painting by Hilda Sands of Naper road is among those by 114 Michigan artists in the third annual amateur art exhibition in the Rackham building at the University of Michigan.

Her painting is entitled "Green Fruit".

The exhibit, which started August 12 in conjunction with the Regional Art conference sponsored by the U. of M. extension service, will continue through Saturday noon, August 24.

Visitors may view the paintings from 9 a.m. to 5 p.m. Monday through Friday.

### BUYERS WAITING!

FOR PROPERTY  
IN THE NOVI-  
NORTHVILLE  
AREA.

KEITH METCALF CO.  
43322 Grand River — Novi  
Phone Northville 1488

**BE SURE -- INSURE**

**The CARRINGTON**

120 North Center  
Northville Phone 284

**AGENCY**

**Complete Insurance Service**

**BEST LAWNS ARE PLANTED IN THE FALL!**

Build A Better Lawn Now  
with QUALITY SCOTTS SEEDS!

*Scott it yourself*

USE OUR ROLLER FREE!

**Stone's Gamble Store**

117 E. MAIN NORTHVILLE PH. 1127



CARLOADS OF CHRISTMAS TOYS  
ARE ARRIVING DAILY! SEE  
THEM ON OUR 2nd FLOOR



## NEWS AROUND NORTHVILLE

Dorothy Welch, daughter of Mr. and Mrs. Ed Welch of Wing street, will enter Hope college as a freshman this fall.

Honored at a stork shower Wednesday night was Mrs. David Fowler, daughter of Mrs. Helen Robertson of Randolph street. Co-hostesses for the party, held at Mrs. Robertson's home, were Mrs. Kermit Nolte and Mrs. Robert Stover. Guests were present from Walled Lake, Plymouth, South Lyon and Northville. Mrs. Fowler is the former Janet Robertson.

Mrs. John Keyes and children of Randolph street spent last week in Howell where they visited her parents, Mr. and Mrs. Harry Gartrell.

Mr. and Mrs. Charles Logeman and family, formerly of 235 Grace street, moved last Friday to 795 Rayson street.

Mr. and Mrs. D. Hurd Clark of West Seven Mile road were guests of Mr. and Mrs. Ken Jones of

Grosse Pointe at the Aqua Follies Ball at the Detroit Boat club last Saturday night.

Mr. and Mrs. Arthur Verschaave and daughter, Ariana, of Clement road returned last week end from a two week trip to New York City and Woodstock, New York, an artist's colony in the Catskill Mountains where they visited friends.

Mrs. Frank Sinks and Mrs. W. L. Holden, both of Detroit, were dinner guests last Friday of Mr. and Mrs. Don P. Yerkes of Eight Mile road.

Mr. and Mrs. Allen Buckley and Richard of Yerkes avenue returned Saturday from a vacation at Rifle lake.

Mr. and Mrs. Harry Duerson and daughter, Gay, of Dunlap street attended the wedding of Elizabeth Cole, daughter of Mr. and Mrs. M. W. Cole of Detroit and Dale Hauch in Detroit Saturday at Redeemer Presbyterian church and the reception following at the Park Shelton hotel.

Mimi Harrison, daughter of Mr. and Mrs. Gerald Harrison, formerly of Northville and now of Farmington, leaves August 23 for Europe where she will work with the recreation department of the army.

### Local Woman Home from Europe

While her son-in-law was busy in Brussels last week speaking before a gathering of psychiatrists, Mrs. Charles Altman of 790 Grace street joined her daughter and granddaughter in a two week tour of Europe.

Her son-in-law, Dr. Howard Hunt, is chairman of the department of psychology at the University of Chicago. His wife, Ida; daughter, Carol, and Mrs. Altman joined him on the assignment to Brussels. Included in their trip were visits to Switzerland, Holland, Ireland and France — where Carol celebrated her 12th birthday in Paris.

Kent Bradshaw, son of Mr. and Mrs. Bruce Bradshaw returned home Tuesday after spending a week visiting friends in Indiana and Illinois. Jim Holderman, a fraternity brother from Illinois, came home with him for a return visit.

House guest of Mr. and Mrs. R. J. Wright of Fairbrook for two weeks is Mrs. Henry Gay of Atlanta, Georgia.

Larry Gotts, son of Mr. and Mrs. Fred Gotts of North Center street, was home last week end to attend the family birthday party of his uncle, Claude Waterman, of Reservoir road. Larry leaves tomorrow for St. Olaf, Minnesota where he will attend Ashrum, meeting of Lutheran ministers and youth, and will journey to Columbus, Ohio on September 7 where he will begin studies at a Lutheran seminary to become a minister.

Mrs. Harvey Hodge and Mrs. Charles Freydl were co-hostesses at a "bon voyage" dinner in the Mayflower room of the Mayflower Hotel in Plymouth on Wednesday evening, August 21, honoring Mrs. A. Holcomb who will leave on August 29 for a two month tour of Europe. Guests included Mrs. Holcomb's mother, Mrs. James Clark, and Mrs. Bert Nelson, Mrs. Bruno Freydl, Mrs. Garrett Barry, Mrs. Russell Lyke, Mrs. Harold Tuck, Mrs. Ralph Hay, Sr., Mrs. Charles Young, Mrs. L. W. Snow, Mrs. A.C. Van Kirk, Mrs. Jack Farmer, Mrs. Frank Broda, Mrs. Robert Freydl and Mrs. Harold McElroy.

Mrs. Edwin Mueller, Mrs. R. D. Merriam, Mrs. John Burkman, Mrs. John Haller, Mrs. William Walker and Mrs. Glenn Cummings attended the annual workshop garden party at Kellogg Center in East Lansing on Wednesday.

Mr. and Mrs. Herbert Frogner entertained friends from Rochester on Saturday evening.

Mrs. Thomas Cummings of Fairbrook Court returned from their cottage at Ippewash where she has been vacationing for the past two weeks.

Francis M. Bogart was guest of Mr. and Mrs. Glenn Cummings last week end.

Clara Papini, daughter of Mr. and Mrs. Rano Papini of Wing Court, is spending this week at Pioneer Girls Camp, Camp Cherith at Reading, Michigan.

Mrs. Bruce B. Bradshaw of Sheldon road attended the Michigan State Conservation School at Higgins lake last week.

To celebrate Harold Masters' tenth birthday his mother, Mrs. Ruby Marie Masters had a birthday luncheon at the Old Mill restaurant last Thursday. Those attending were Penn Papini, Larry Glassen, Thomas Wicke, Michael and Kevin Crow and his three brothers, David, Harris and Greg Masters.

Mr. and Mrs. Ray Curtis and son, Danny, of Eldridge, Iowa are spending a few days with Mrs. Curtis' parents, Mr. and Mrs. Harry German of Orchard drive.

Mr. and Mrs. John Canterbury and family of Randolph street returned recently from a week's vacation at East Tawas.

## Newcomer's Corner

"I look upon every day to be lost, in which I do not make a new acquaintance."

—Samuel Johnson



FROM DEARBORN — Mr. and Mrs. H. R. Pacific and children, Gloria, 10; Gary, 14, and John, 2½, have lived in Northville Estates subdivision since February. Oh yes — the fluffy pup is "Topsy".

Mr. H. R. Pacific works for the Lincoln division of Ford Motor company — but that's not the reason the family moved to the Northville area.

In fact, he works in Dearborn so must drive many miles to work each day as an accessory engineer with the division.

"We just wanted to have a share in suburban living," Mrs. Pacific says. "And we just love it here," she added.

The Pacifics — including Gary, 14; Gloria, 10, and John, 2½—moved from Dearborn in February. Another member of the family is "Topsy", a black and white pooch.

Both Mr. and Mrs. Pacific are original Detroiters. Mr. Pacific attended Hillsdale college, as did his wife, and graduated from Wayne university engineering school.

The family has been spending its summer week ends at their cottage in Port Austin, on Saginaw Bay — so has had a chance to indulge in their favorite summer sports — fishing, boating, swimming and water skiing.

**DON'T SCRATCH THAT ITCH!**  
Your 40¢ back at any drug store if not pleased. Easy-to-apply ITCH-ME-NOT deadens itch in MINUTES; kills germs on CONTACT. Fine for eczema, ringworm, insect bites, foot itch and other surface itches. Guaranteed locally by Gussell's Drug Store.

### WEDDING ATTENDANTS GOWNS

DRESS-MAKING ALTERATIONS  
324 Yerkes Ph. 1355-J

### GENUINE Ceramic Tile Slate and Marble

- BATHS
- KITCHENS
- HEARTHES
- VESTIBULES

### NEW AND REMODELING

FREE ESTIMATES  
Satisfaction Guaranteed

Richard's Ceramic Tile Co.  
PH. NORTHVILLE 943-W1

## Final Clearance

BUY NOW AND SAVE!

ALL SUMMER MERCHANDISE MUST GO!

- |                                                                            |                                                                         |
|----------------------------------------------------------------------------|-------------------------------------------------------------------------|
| <b>Dresses</b><br>Sizes 7 to 15<br>10 to 20 and ½ sizes<br><b>At Cost!</b> | <b>Skirts &amp; Blouses</b><br>All Sizes<br><b>At Cost</b>              |
| <b>Maternity Wear</b><br>Tops<br>Skirts<br>Pedal Pushers                   | <b>T-Shirts and Shorts</b><br>Reg. 2.98 NOW \$1.39                      |
| <b>Hats</b><br>Casual & Dressy<br>Summer Styles                            | <b>Sun Dresses</b><br>Strapless Styles to Fit Everyone<br><b>\$1.98</b> |

FALL MERCHANDISE ARRIVING

No Stamps With Sale Merchandise

*Villa Dress Shoppe*

150 N. Center

Phone 575



checks for a thrifty figure

### ECON-O-CHECKS

Any wonder National Bank of Detroit ECON-O-CHECKS® are so popular with the ladies—and with lots of gentlemen, too? You pay only one charge for 20 checks with your name printed free on every one. The checks come complete with a convenient check record and handsome carrying case. No minimum balance, no monthly service charge, no charge for deposits or statements. They're perfect for people who write only a few checks each month or keep a moderate balance in a checking account. Ask about ECON-O-CHECKS at any of NBD's 59 offices in Metropolitan Detroit which offer you every banking and trust service.



More friends because we help more people

**NATIONAL BANK OF DETROIT**  
Member Federal Deposit Insurance Corporation

### The Northville Record

Published each Thursday by The Northville Record, Inc., 101 N. Center St., Northville, Michigan

Entered as Second Class Matter in the U.S. Post Office at Northville, Michigan.

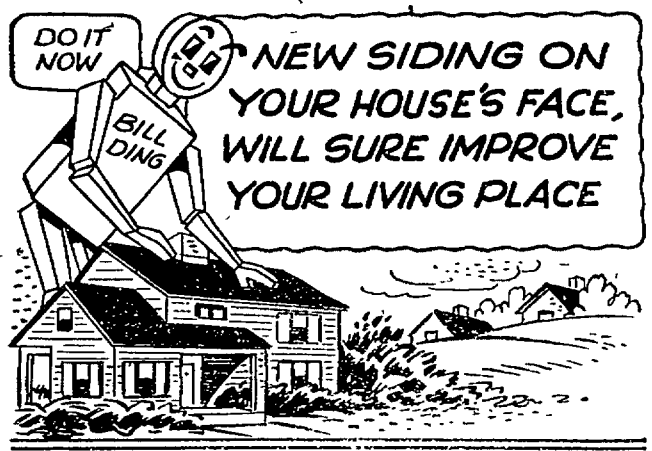
**Subscription Rates**  
\$3.00 per year in Michigan  
\$4.00 elsewhere

William C. Sliger, Publisher

### WANTED!

PROPERTY TO LIST FOR IMMEDIATE SALE!

KEITH METCALF CO.  
43322 Grand River — Noyl  
Phone Northville 1488



All types of siding or whatever it takes in the lumber and material line to renew, repair or freshen up the appearance of your home. DuPont exterior paints in white of three types and non-fade trim in sharply contrasting colors will brighten up a faded home exterior. Never higher than good grade quality paints.



## Decorating

— by BLUNK'S

IDEAS

No. 9

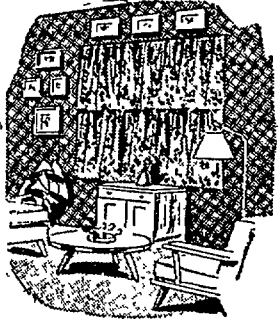
Member of the Grand Rapids Furniture Makers Guild

### DON'T OVER-DECORATE

This is the most common mistake made by many who feel that they must use every decorative accessory they possess all of the time. The end result is usually a cluttered room, entirely lacking in unity and character, and one that's difficult to care for. Your room will have a greater chance of success if you ..

### START SIMPLY

with a color scheme that will establish the atmosphere you desire, and will play up the beauty of your furnishings. Use accessories sparingly. If you have a great many nice things, use them a few at a time. Changing them frequently gives freshness to the room plan, and will increase your enjoyment of them.



If you like lots of convenience in a small space, you'll love our new group of drop-leaf tables. Perfect for small dining rooms, or living-dining areas. Light or dark finishes to complement your existing furnishings.

We are well aware of your desire, to make your home distinctive and convenient, and to that end we have garnered a group of home furnishings that you'll be happy to live with, proud to own. Do come in and see us ... soon.

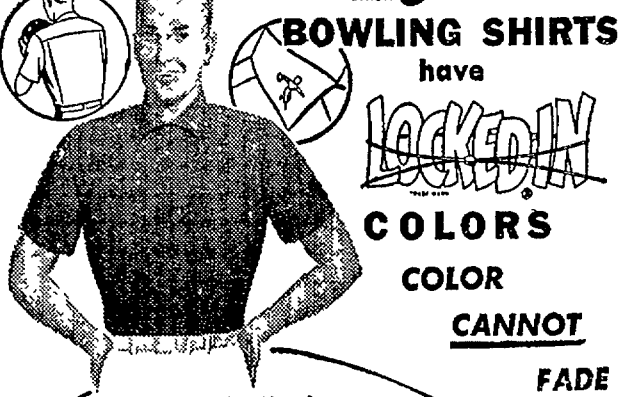
STORE HOURS: 9 a.m. to 6 p.m.  
Friday Nights 'til 9 p.m.  
Closed Wednesday at Noon during August

## BLUNK'S

Furniture — Carpeting

825 PENNIMAN PLYMOUTH 1790

## NOW! King Louie



"Action" colors that will match EXACTLY any other New King Louie shirt of like shade. PERFECT MATCHING OF TEAM COLORS. 10 beautiful solid shades

Wear the shirt the Champions wear. The shirt that's made for action. After 16 weeks of wearing and washing, compare King Louie with other shirts you see on the bowling lanes. "LOCKED-IN" COLOR will still be as bright as the day it was purchased. Pure silk Swiss Embroidered Figure on collar.

WIN \$300.00 while wearing the King Louie "LOCKED-IN" COLOR SHIRT

King Louie exclusive "Locked-In" color process guarantees that ... color can't fade out, can't bleach out, can't sweat out.

See US for Details

**FREYDL Cleaners & Men's Wear**  
112 E. MAIN NORTHVILLE PHONE 400

More and More . . . People Are Finding  
It's Just Good Business To

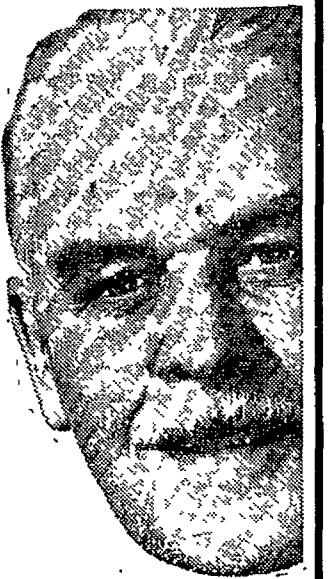
# SHOP IN NORTHVILLE



It's soon "back-to-school" and Mrs. William Spess (left) of Brader's Department store shows Mrs. Irene Kaczor and her daughter, Patricia, a popular wrinkle-shed, Fruit-of-the-Loom Dan River cotton dress. Brader's offers a complete array of apparel for men, women and children for work, play, school and dress-up occasions.



Glenn Long's modern plumbing and heating showroom on Seven Mile road just east of Northville road attracted Mr. and Mrs. Gerald Jahn of Livonia, who with their small son are shown examining a Rheem electric water heater. Long (right) features a complete line of American Standard, Kohler, Crane and Briggs fixtures. He also offers complete plumbing and heating services.



*There's more than one reason why it pays to do your shopping locally:*

• **CONVENIENCE**

It's so easy to shop in Northville, only a few minutes from your home and parking right near the stores.

• **QUALITY**

All the nationally known brands you prefer are available right in Northville.

• **RELIABILITY**

Your local merchant is also your neighbor.

• **ECONOMY**

Prices must be competitive! And actually you save by not having to drive miles for your "bargains"

• **SELECTION**

Northville's variety of stores can supply all your needs.

• **POLICY**

Your local merchant helps support your community and schools. He deserves your support!

This series of messages sponsored in the interest of promoting Northville's business center by . . .

S. L. Brader Co.  
D. & C. Stores, Inc.  
E.M.B. Market  
Famous Stores  
Freydl's Cleaners & Men's Wear

Freydl's Women's Wear  
G. E. Miller Sales & Service  
Gunsell Drugs  
Glenn Long Plumbing & Heating  
Johnson's Gift Shop

Lawrence Mayer Florist  
Lila's Flowers and Gifts  
Marr Taylor Ford Sales  
Northville Drug Co.  
Northville Electric Shop  
Northville Hardware

Northville Men's Shop  
Northville Refrigeration Service  
Nowels Lumber & Coal Co.  
Rathburn Chevrolet Sales  
Ritchie Bros. Laundromat

Schrader's Home Furnishings  
Sibley's Style Shop  
Stone's Gamble Store  
Tewksbury Jewelers  
Villa Dress Shoppe



**WAIT  
FOR '58!**

**WATCH  
FOR SEPT. 4!**

THE ALL-NEW  
**EDSEL**  
IS COMING TO  
**WEST BROS.  
EDSEL, INC.**  
534 FOREST in PLYMOUTH

**In Willowbrook:**

**Bowling Season to Begin**

By Mrs. John Parent — Greenleaf 4-2060

Bowling season is beginning soon with the organization of the Willow Wood bowling league for ladies. A meeting will be held Tuesday, September 2 at 8 p.m. at the home of Gertrude Graczyk, 28286 Green Willow road, Farmington, for those who wish to join. Anyone interested may call Vi Newton at Greenleaf 4-7683.

Mr. and Mrs. John Williams of Glen Ridge had as their houseguests for two weeks Mr. and Mrs. Bernard Hawkins and Cheryl and Mrs. Eleanor Williams of Phoenix, Arizona.

Mr. and Mrs. Robert McKeon of

Meadowbrook announce the birth of their fourth daughter on Saturday, August 17. The baby was born at Mt. Carmel and weighs seven pounds and three ounces.

A ninth birthday party was celebrated last Friday by Sherry Halick of Mooringside. Her guests were her cousins, Dale Brown, of Windsor and Dennis and Cindy Heaton of Coral Lane. Her aunt, Mrs. Heaton, and grandmother, Elizabeth Terperio of Windsor were also present.

The Bill Reiss family of LeBost spent the week end at Cadillac as the guest of Mr. and Mrs. N. J. Quist.

Mr. and Mrs. Jack Parent enjoyed "Naughty Marietta" Tuesday night at Botsford Inn.

Duane and Barb Branch of Malott spent the week end before last at the cottage of their neighbors, Jack and Nina Keith near Brighton.

Eleanor Wingard of Malott spent last Wednesday with the girls she used to teach with in Ann Arbor. She had luncheon at the home of Mrs. Norman Amos of Ann Arbor.

Mrs. C. B. Hawley, Sr. of Philadelphia was the houseguest of the Cliff Hawleys of McMahon over the week end.

Paul Bunker of Mooringside broke his arm last week playing football. He will be sporting a cast for six or seven weeks.

Mr. and Mrs. Virge Campbell of McMahon had a dinner party Saturday evening. Their guests were Mr. and Mrs. Karl Weiss of Mooringside, Mr. and Mrs. Roy Sager and Mr. and Mrs. Robert Brocket of Detroit.

A pleasant luncheon and afternoon at Forest Lake Country club was enjoyed Thursday by Louise Ranno of McMahon and her guest, Mary Redmond of Birmingham, and Eleanor Wingard and Marg Parent of Willowbrook.

Five year old Denise Halick of Mooringside was bitten by a dog last Tuesday. Denise had to have four stitches taken in her face.

The William Gammers of McMahon are home after a month's visit in St. Louis. They visited with Mary's parents, Mr. and Mrs. Edward Hulahan.

The Robert McClellands are home again on East LeBost after a ten day trip to northern Michigan. They stayed with Grace and Alice McClelland but spent most of their time on their boat. After their return, they were visited by Mrs. Ralph McClelland and Mrs. Bass of Hinsdale, Illinois.

The Bud Barnes family of Mooringside attended a barbeque last Sunday at the home of Mr. and Mrs. Thomas Satwicz ofetroit.

Mr. and Mrs. Albie LaBarge and their daughter of East LeBost spent their vacation at a cottage near Gaylord. A gay time was had by all for they were joined by Mr. and Mrs. Clarence Bulla and their four children of Lake Orion and Mr. and Mrs. Carl Hudson and their two children of Ferndale.

Frank and Ginny Nelson of Malott celebrated Ginny's birthday on Saturday, August 10 by dining out at Huck's Redford Inn with Mr. and Mrs. Steve Dennis of Oak Park and Mr. and Mrs. Tom Ferris of Kendalwood.

**Novi Highlights**

Mr. and Mrs. Lester Ward were the Saturday evening dinner guests of Mr. and Mrs. Douglas Watson at their home on Clarke street.

Mrs. Joe Cicirella stayed with her aunt, Mrs. Lillian Leavenworth, while her parents, the William Hansons were on vacation.

Denise, daughter of Mr. and Mrs. Robert Hansor, celebrated her sixth birthday and William Hansor, Jr. his 36th birthday Sunday, August 18 at a family get-together barbeque at the Robert Hansor home on Taft road.

Mrs. George Atkinson and Mrs. Glen C. Salow are entertaining guests at their cottages near Lewiston this week. The guests are Mrs. Hadley Bachert, Mrs. William Racov, Mrs. Frances Denton, Mrs. Roy Marshall, Mrs. Gale Enders, Mrs. George Kahrl, Mrs. Floyd Darling and Mrs. James Frisbie.

Mrs. Archie Kent and her grandson, Kenny Snow, visited the gladiol farm near Howell Monday.

**Police Bag Youth  
In 95-mph Chase**

A Detroit youth, arrested after a 95 mph chase through Novi Monday night, will appear in court today on charges of reckless driving.

Novi police chief Lee BeGole said partolman Richard Noble arrested William Sumerton, 18, 16734 Mansfield, after a four-mile chase down Grand River from Novi road.

BeGole said Sumerton and three passengers had been drinking. Police found a stiletto with a six-inch blade in the car.

**WALLED LAKE  
PARK**  
*the Picnic Wonderland!*  
★ Tuesdays and Thursdays ★  
★ Bargain Nights ★  
★ Free Admission ★  
**ALL RIDES 10c**  
★ Adults & Children ★  
★ Free Parking ★

**American Legion Seek New Vets**

A team of American Legion officials will tour the entire state during the month of August in an effort to promote membership in the world's largest veterans organization.

The drive for the 1958 membership year is currently underway in the state's 510 Legion posts.

The visit to the 17th district — which includes Northville — will be

made next Wednesday at the Redford township post.

In announcing the plans for the tour, state membership director Andrew Templeton of Detroit said that the team will visit all 18 districts of the Legion.

**TO RENT—BUY—SELL  
PHONE 200**

**FARMINGTON CUT STONE, Inc.**  
38411 Grand River at Ten Mile Road

**WE NOW HAVE IN STOCK**

DOOR SILLS WINDOW SILLS CHIMNEY CAPS  
TENNESSEE LEDGE ROCK BRIAR HILL SAND STONE  
FLOWER BOXES OUTSIDE BAR-B-QUES

**Greenleaf 4-7824**

**ELECTRIC  
CONTRACTOR**

**WIRING  
FOR LIGHT and POWER  
FLUORESCENT LIGHTING**

**SALES & SERVICE  
for  
DELCO MOTORS  
NO JOB TOO LARGE  
or  
TOO SMALL**

**CALL  
262**

**DeKay Electric**  
431 YERKES NORTHVILLE

**P&A Theatre** NORTHVILLE Ph. 117  
OPEN WEEK DAYS 6:30 - SAT. SUN 2:30 CONTINUOUS

NOW SHOWING THRU SATURDAY  
WALT DISNEY'S TECHNICOLOR HIT  
HAL STALMASTER — LUANA PATTEN  
**"JOHNNY TREMAIN"**

**Kiddie Matinee every Sat. open 2:30**

SUNDAY — MONDAY — TUESDAY

**PAT BOONE IS  
SINGING LOVE  
SONGS TO**  
**"BERNARDINE"**  
COLOR by DE LUXE  
CINEMASCOPE  
20th Century-Fox  
starring  
**PAT BOONE • TERRY MOORE  
JANET GAYNOR • DEAN JAGGER**  
Produced by SAMUEL G. ENGEL • Directed by HENRY LEVIN • Screenplay by THEODORE REEVES  
Starts Wed., Aug. 28 — "TARZAN & LOST SAFARI" (Color)

**THE  
PENN THEATRE**

— for the best in entertainment —  
**PLYMOUTH, MICHIGAN**

— PHONE 1909 —

**AIR CONDITIONED**

THUR.-FRI.-SAT. — AUG. 22-23-24

**PAT BOONE IS  
SINGING LOVE  
SONGS TO**  
**"BERNARDINE"**  
COLOR by DE LUXE  
CINEMASCOPE  
20th Century-Fox  
starring  
**PAT BOONE • TERRY MOORE  
JANET GAYNOR • DEAN JAGGER**  
Produced by SAMUEL G. ENGEL • Directed by HENRY LEVIN • Screenplay by THEODORE REEVES

Nightly Showings 7:00-9:00

PLEASE NOTE — ONE WEEK

SUN. THRU SAT. — AUG. 25 THRU AUG. 31  
CINEMASCOPE

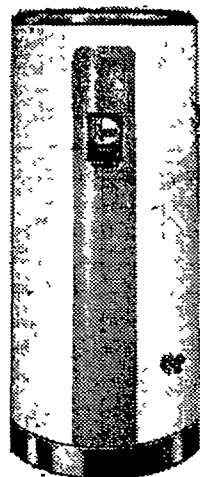
JAMES MASON — JOAN FONTAINE  
HARRY BELAFONTE — DOROTHY DANDRIDGE  
MICHAEL RENNE — JOAN COLLINS  
— in —

**"ISLAND IN THE SUN"**  
(Color)

Sunday Showings 3:00-5:00-7:00-9:00  
Nightly Showings 7:00-9:00



**ELECTRIC  
water  
heaters**



built for  
**COMPLETE SAFETY  
DEPENDABLE  
SERVICE**

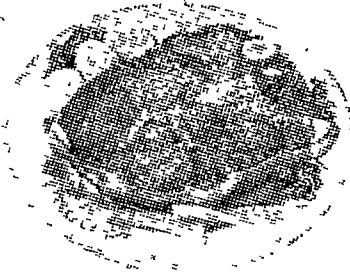
**Only \$10995**

VISIT OUR MODERN SHOW  
ROOM FOR A COMPLETE  
DISPLAY OF PLUMBING &  
HEATING EQUIPMENT.

**GLENN C. LONG**  
43300 7 Mile Rd. Northville  
PHONE 1128

**Thrifty MEAT SALE!**

NOW! GIVE YOUR BUDGET A REAL SAVING DURING KROGER'S "THRIFTY" SALE  
**ROUND, RIB OR SIRLOIN**



**Steaks**

"Thrifty" meat comes from young  
range-fed cattle. While "Thrifty"  
meat does not carry the amount of  
fat found on grain-fed beef it has  
fully as much food value. Stock  
your freezer today!

Lb. **79c**

Roast or ENGLISH CUT Lb. **49c**  
Lean, fresh "Thrifty" meat

Wonderbirds Lb. **49c**  
Plump and tender, 3½-5 lb. avg.

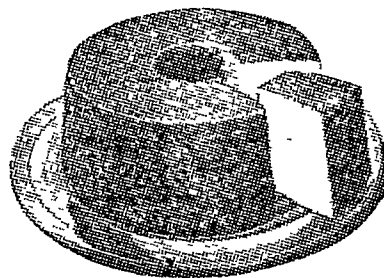
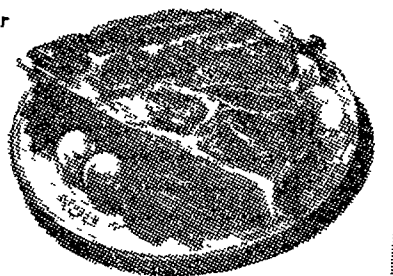
Chuck Roast Lb. **49c**  
U. S. Gov't. graded choice

Beef Liver Lb. **39c**  
Fresh from tender beef

LEAN BLADE-CUT "THRIFTY"  
**Chuck Roasts**

Your best budget  
buy. Stock your  
freezer now.

Lb. **39c**



**Angel Food**

Baked by Kroger's master  
bakers. Buy now and save more. Lge. Size **39c**

Cake NEOPOLITAN Pkg. **33c**  
Fresh Kroger baked. Reg. 39c

Cinnamon Rolls Each **21c**  
Fresh Kroger baked. Reg. 25c

DELICIOUS, QUICK-FROZEN TOWN SQUARE



APPLE  
**Pies**  
3 22-Oz. Pies **\$1**

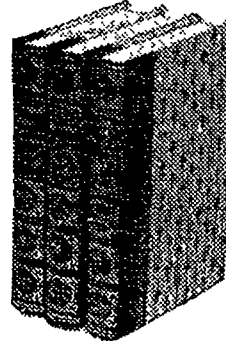
Allsweet MARGARINE 3 1-Lb. Ctns. **69c**  
Kroger low price

Ice Cream 1/4-Gal. Carton **69c**  
Country Club asst. flavors

START YOUR COLLECTION NOW —  
**Children's Classics**

- Treasure Island
- Captains Courageous
- A Tale of Two Cities
- The Three Musketeers
- The Deerslayer
- David Copperfield
- Robin Hood, Last of the Mohicans
- Red Badge of Courage, Connecticut Yankee
- Lorna Doone, Pride & Prejudice
- Tom Sawyer
- Huckleberry Finn
- Moby Dick
- Two Years Before the Mast

Each **99c**



FRESH PRESSED FLAVOR — DELICIOUS KROGER

**Tomato Juice**

Stock up your pantry now at this  
special low Kroger price.

46-Oz. Can **19c**

Colored Kleenex  
White, Yellow or Pink

400-Ct. Box **27c**

Pork & Beans  
Kroger brand. Priced extra low.

1-Lb. Can **10c**

FINE FOR QUICK, TASTY SANDWICHES

**Swift's Prem**

Delicious fried with eggs. Buy  
now and save even more.

12-Oz. Can **39c**

Instant Coffee  
Kroger brand with Flay-aroma

4-Oz. Jar **79c**

Preserves  
Embassy Grape, Strawberry, Plum

3 20-Oz. Jars **\$1.00**

DELICIOUS GOLDEN, AVONDALE UNPEELED

**Apricots**

In syrup. Buy plenty at Kroger's  
low, low price.

3 2½ Cans **69c**

Corned Beef  
Swift's. Fine for sandwiches

12-Oz. Can **39c**

Peanut Butter  
Swift's Oz brand, always fresh

20-Oz. Jar **59c**

PLUMP AND JUICY  
CALIFORNIA JUMBO 27 SIZE

**Cantaloupe**

Delicious with ice cream. Buy  
plenty for fruit bowls, salads  
and dessert. Kroger low, low  
price.

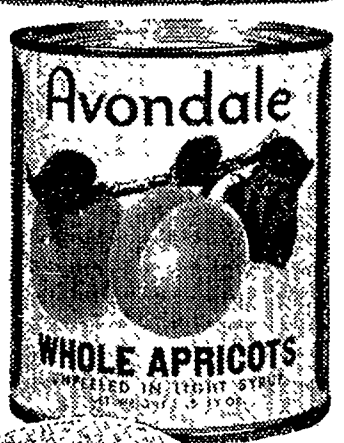
3 For **87c**

Watermelon  
Red-ripe, sugar-sweet

Each **79c**

Honeydews  
Vine-ripe and vine-fresh

Each **59c**



**Get Top Value Stamps Plus Low, Low, Low Prices at Kroger!**

We reserve the right to limit quantities. Prices effective through Sunday, August 25, 1957



# WANT ADS

CLASSIFIED ADVERTISING RATES: 4 cents per word (minimum 60 cents). 10 cent discount on subsequent insertions of same advertisement. 10 cents per line extra for bold face or capital letters.

CLASSIFIED DISPLAY ADVERTISING RATE: 90 cents per column inch for first insertion, 80 cents per column inch for subsequent insertions of same advertisement.

## 1-CARD OF THANKS

I wish to thank all my friends and neighbors for the cards, flowers and their kindness during my stay in the St. Joseph hospital. Also, thanks to Rev. and Mrs. Nieuwkoop for their wonderful help.  
Mrs. Melinda Schrader

## 2-FOR SALE-REALESTATE

### NORTHVILLE

Charming hillside tri-level on beautifully landscaped 4 acres. Public and parochial schools within three blocks. 13'x22' living room with fireplace and 2 picture windows, dining room, 3 bedrooms, 20'x28' paneled activities room with fireplace, utility room with shower adjoining convenient kitchen. Beautiful view of country side from every room. Wall to wall carpeting and draperies. Anderson windows throughout. Storms, screens, garage, screened porch and sun deck. Lovely picnic area. Fine 30'x22' barn with three stalls and tack room. Horse and saddle ideal for children included.

**CARL H. JOHNSON**  
PH. NORTHVILLE 299 or 2816  
OWNER

261 N. MILL ST.  
Plymouth: 5 Rms, full basement, gas heat, incinerator, garbage disposal, landscaped, yard, garage.

Between Plymouth and Ann Arbor, 88 Acres, \$800 per acre. 25 percent down, balance in 10 years.

10 Acres with small building, near Milford. \$9,500. Easy terms

## JOSEPH TREMAIN

Broker  
42331 CLEMONS AVE.  
PLYMOUTH 790-W

Beautiful estate home, 9 rooms. Large recreation room. Kitchen—plenty of cupboard space. Brick construction. Everything modern. Barn for horses. 2-car garage. Car drive, black top. Very nice setting of shrubs. 3 acres of land. A Home in the Country. Priced reasonable.

Home in the country on 2 1/2 acres. Up high and dry. Lge. front lawn. Shrubs. Circle drive. Ranch type. Living room extra good. Sun room. Recreation room. Kitchen with cupboards to spare. 2-car garage. Brick and sand stone construction. Long and beautiful. Only \$5,000 down. Balance at \$125 per month including interest. Don't pay rent. Live in a beautiful home of your own.

Hunters and Fisherman's Paradise

160 acres of land in the Upper Peninsula, 1 1/2 miles from Lake Michigan. Trout stream. Plenty of deer and bear. 6 room house, frame, 3 bedrooms. In good shape. Could be enlarged for camp. Some fences. About 30 or 40 acres cleared. Balance good grazing. 80 miles from St. Ignace. Cheap at \$4,500 down. Balance on land contract. Stop at 202 W. Main, Northville, and see pictures.

Development — Investment — Lake property and vacant property from 1 acre to 40 acre parcels. Also farm property. Call for information.

## Atchinson Realty Co.

202 W. MAIN N'VILLE. 675

BY OWNER in Livonia 4 B.Rm. home on 8 Mile Rd. Full basement. Attached 2-car garage, storms and screens. Fruit, shade trees and berries on nice landscaped half acre. Newly decorated. For appointment call Farmington, Greenleaf 4-0719.

8520 BROOKVILLE Rd. 4 B.Rm. ranch on 11 acres. 7 miles west of Plymouth. Also has 2 buildings built for light manufacturing, 30'x75', 20'x50'. Automatic heat, power. Some machinery. Terms. Fred W. Smith Realty, VErmont 8-7870 or Webster 5-7125.

3 BEDROOM lake front home. Utility room, furnace, basement. Lge. lot. Call Market 4-2774.

## 2-FOR SALE-REALESTATE

AWAY UNTIL AUG. 26  
A little "coffee break" because of:  
Large ranch home on 2 acre estate at 46605 W. 7 Mile Rd.  
Sold by D. J. STARK

Nice 2-fam. Apt. at 108 Randolph St.  
Sold by D. J. STARK

Spacious 5 B.R. home on large corner lot, 512 Whipple, S. Lyon  
Sold by D. J. STARK

35 Acres subdivision property on Bradner bet. 5 and 6 Mile Rds.  
Sold by D. J. STARK

Beautiful 3 B.R. modern home at 744 Spring Dr.  
Sold by D. J. STARK

Lovely country estate home on 3 1/2 acres at 47900 W. 7 Mi. Rd.  
Sold by D. J. STARK

2 large roomy lots in Fairbrook Ct.  
Sold by D. J. STARK

Several others of all kinds  
Sold by D. J. STARK

Want to sell? Call me. List Now. For results you like — See

**D. J. STARK**  
— Realtor —

900 SCOTT NORTHVILLE  
PHONE 408  
Member Multiple Listing Service

39,000 West 7 Mile — Livonia  
220'x248' Site

Modernized farm colonial — 3 b.rms., den, liv. rm. 12x22', lge. kitchen, oil heat. Electric range, draperies, and liv. rm. carpeting included ..... \$19,900

39040 West 7 Mile — Livonia  
3/4 Acre Site

Early American Colonial — 3 b. rms., 2 baths, liv. rm. 15x30', plus sitting, dining, breakfast rms. and lge. kitchen with pantry, natural fireplace, hot water oil heat. A lge. barn with 5 box stalls, 3 tie stalls and room for 4 cars plus carriage garage \$24,900

Both homes on beautifully landscaped rolling site overlooking small private lake. May be purchased separately or in a complete package.

HOUSE, 12361 W. 9 Mile Rd., South Lyon. Planning to leave Michigan. Call GENEVA 7-9015. Harold Lefler. 14

G.I. 3 B. Rm. contemporary ranches. City of Walled Lake. School-crest Manor off Pontiac Trail. \$800 down plus costs moves you in. Market 4-1875. Walled Lake Realty. 13

LOT, 80x 132 ft. on Carpenter St. near new grade school. \$2,500. Ph. Northville 299 or 2816. 13

3 B.R.M. HOME, fireplace, large screened porch, full basement, steam heat. Lge. lot, fence. Lots of fruits and berries. Many evergreens and shrubbery. Near new Catholic church and school. Fine location. Harry German, 2204 Orchard Dr. 14

HOUSE by owner. Reservoir Rd. section, 16491 Homer. Built 1952. 2 B.Rm. Attached heated garage. Fully carpeted. City water. \$5,000 down. Appointment only. N'ville. 335

29250 Beck Rd., remodeled 11-room house, 2 full baths, lge. rooms. Hot water heat. Over 2 acres. One mile from Lincoln plant. Garage in basement. \$19,500. Leaving town. Ph. Market 4-2500.

PLYMOUTH: Lovely colonial near Catholic, Lutheran, public schools. 3 B.Rms., den, beautiful custom-built kitchen, dishwasher, disposal, lge. dining room, sun room, fireplace, gas heat, basement, storms, screens, 2-car garage. Low taxes. Immediate possession or will wait for you to sell your home. \$18,500. Call afternoons Plymouth 465-M.

CHOICE business lots in South Lyon on Pontiac Trail, 40'x200'. Carl H. Johnson, Broker. Phone 299 or 2816. 15

NEW 6-rm. home, 1 1/2 baths. Small down payment. 40960 Mooringside. Call collect, Townsend 6-3646 mornings.

3-FOR SALE — Household

BED, complete, \$30. Will sell separate. Bicycle, \$20. Miscellaneous household items. N'ville. 160-W.

JUNIOR Hoover cleaner in good condition, \$25. Call N'ville. 2991 before Sunday.

## 3-FOR SALE — Household

CONSOLE FM & AM radio and phonograph. Call 967-J evenings. tf

YOUR Westinghouse dealer offering 5 years' free service on all new appliances (TV-1 year). Also RCA and Kelvinator. West Bros. Appliances, 507 S. Main St., Plymouth. Phone 302. 12tf

HAMMOND organ, used spinet model guaranteed like new, \$945. Terms. See model Hammond \$1995, complete with tone cabinet. Terms. Piano, used, studio model, \$295. Smith Music Co., 504 S. Main St., Plymouth. Ph. Ply. 3020. 21tf

WATER SOFTENERS  
Factory rebuilt and refinished softeners of many well known makes at sensational prices. Sizes from 30,000 grains to 100,000 grains — from \$50. All guaranteed. It is better to buy a good conditioned well known make of softener than a new one of unknown quality. These softeners have been traded in on new Reynolds Automatic softeners and we stand back of them.  
It will pay you to see us before you buy any softener. Every type and size of manually controlled, semi-automatic and the wonderful Reynolds fully automatic softeners on display. You can't beat the best and you can't beat our values. Come to see us or call collect for a representative to see you.  
Learn About the Unique Reynolds Rental Plan  
Reynolds Water Conditioning Co. (formerly Reynolds-Shaffer Co.)  
Mfrs. in Detroit since 1931  
12100 Cloverdale Ave.  
Detroit 4, Mich.  
Call Collect — Webster 3-3800 tf

54" SINK, white enamel, double drain board with cabinet and fixtures. Priced at \$50. Ph. 1146. 14x

7-PC. maple dinette suite. Phone 997-W.

DOUBLE bed, complete. Ph. N'ville 489.

KENMORE ironer, almost new. Maple bunk bed set, excellent condition. Ph. 1111-J.

RUG, Axminster, 12 1/2 x 18. Also apt. size Norge elec. stove; fireplace set, 1/3 h.p. elec. motor, roll-away bed. Ph. 189.

USED Kenmore automatic washer and gas drier. Excellent cond., installed and unconditionally guaranteed for 6 mos., both for \$195. West Bros. Appl., 507 S. Main St., Plymouth.

IDEAL for cottage, elec. stove and refrigerator. See after 5 p.m., 8637 Napier Rd. 14

HOT POINT 62 gal. hot water heater. Very good condition. Ph. 929.

4-FOR SALE — Miscellaneous

AWNINGS. Fine selection of Canvas, Aluminum and Fiber glass. Porch railings. Fox Tent & Awning Co. Phone Northend 2-4407, Ann Arbor or Plymouth 1523. 40tf

FENCING, wood ranch type, 10 designs. Wood turned lamp posts, mail box posts, steel chain link fencing. Many designs. We install. 36 months to pay. All work guaranteed. New Hudson Fence Co. Phone GENEVA 7-9441. 44tf

TRAPP aluminum combination windows, doors, awning type and jalousie, 10% discount, FHA terms. South Lyon Home and Window Sales. Vince Weinburger, GENEVA 8-4744. tf

EMPTY gallon jugs. Also wide mouth jars. Paul's Sweet Shop, 144 E. Main. tf

LINDSAY fully and semi-automatic water softeners. Fiber glass tanks, guaranteed for life. FHA terms, 36 months. No down payment. Free water analysis. Rental softeners, \$3 monthly. Plymouth Softener Service, 181 W. Liberty off Starkweather, Plymouth, Michigan. Phone Plymouth 1508. 6tf

SEED wheat, certified Canadian Genesee at \$3 per bu. Specialty Feed Company. Ph. Plymouth 262 or 423. 14

DON'T FORGET Rotary Rummage Sale Soon. Call 1405-J2 or any Rotarian. 14x

HAY and straw, 50c per bale. 41222 Nine Mile Rd. Ph. 273-J. 13x

DILL and cabbage. Charles Shipley, 677 W. Dunlap. Ph. 98.

DON'T FORGET Rotary Rummage Sale Soon. Call 1405-J2 or any Rotarian. 14x

EVERGREENS - FLOWERING SHRUBS FERTILIZER & GARDEN TOOLS

GRAND RIVER NURSERY  
39340 GRAND RIVER  
Greenleaf 4-2045

PEACHES, W. H. Stobbe, 55280 8 Mile Rd., corner Currie. GENEVA 8-2961. 13tf

PEACHES, Golden Jubilee, Michigan's finest tree-ripened fruit. Bring containers. Straus Orchards 23893 Beck Rd., south of 10 Mile. 14

RASPBERRY plants, 3c each. Also super section strawberry plants. Dig them yourself. 23425 Novi Rd. 14

12'x18' GARAGE, glider, combination storm and screen windows in various sizes. Call after 5 p.m. Plymouth 1577-W.

REGISTERED beagle pups, from good gun dogs. 464 Grace. 14

BLACK and white spotted gelding, gentle for women or children. Must sell. Also Western bridle and saddle. Private owned at L. J. Ranch on Amhrind Rd. between Plymouth and Schoolcraft Rds., east of Eckles Rd. 14

Plumbing Supplies  
At Wholesale Prices  
Buy Direct and Save  
Installation Arranged

20 Gal. Elect. Wtr. Htr. .... \$59.50  
30 Gal. Glass Lined Htr. .... \$79.95  
52 Gal. Elect. Wtr. Htr. .... \$89.50  
5 Ft. Built-in Bathtubs .... \$61.95  
Closets, A Grade ..... \$27.50  
Vanitory Lavatory ..... \$31.50  
Dble. Compt. Lodge Sinks ..... \$20.00  
4 colors to choose  
1/2" Copper Tube, per ft. .... 20c  
Cabinet Ldry. Durotubs ..... \$47.50  
White Closet Seats ..... \$4.50  
Medicine cab., plate glass. .... \$14.50  
3/4" Plastic Pipe, per ft. .... 13c  
Shallow well pumps ..... \$79.95  
Deep Well Pumps ..... \$114.95  
Sump Pumps ..... \$44.50

Largest stock of plumbing supplies in this area, soil pipe, copper tube, faucets, pump controls, valves and fittings, pipe cut to measure, visit our showroom or call us for prices, terms if desired, up to 3 years to pay.  
Plymouth Pbg. and Hig. Supply  
149 West Liberty St.  
Phone Ply. 1640, if no answer, call 3494. Open Fri. eve to 8 p.m. all day Saturday

APPLES. Also tomatoes. You pick. 38445 8 Mile, Livonia.

PEACHES  
Redhaven and Golden Jubilee. Also eating and cooking apples. Foreman Orchards, 3 miles west of Northville on 7 Mile.

REGISTERED English setter pup, 1 yr., 3 mos. old. Ready to hunt. Call Northville 884.

MONTGOMERY oil stove with 5 gal. can and floor board. Complete \$18. Also elec. range, \$20. Stewart Warner wall oil furnace, complete with pipe, tank and stand, \$75. Inside birch door, \$8. 3 combination screen doors, \$10 each. Plymouth 1913-W.

BOXER puppies, AKC registered. Sired by a champion. Light and dark brindle. Call N'ville 2833-J.

FACTORY size drill press, 4 Quick-way grinders, 24 h.p. elec. motor. Can be seen at 42400 Grand River, Novi.

PICK YOUR OWN  
Saturday and Sunday only, tomatoes — early patch and pear tomatoes, \$1.50 bu. Hot peppers, Italian and yellow sweet, \$1.75 bu. Roman, wax and green beans, \$1.75 bu. 28 lbs. Gale's Farm, 38275 W. 6 Mile Rd.

5-FOR SALE — Autos

TRANSPORTATION Specials. Several to choose from, good motors, tires, batteries, etc. Lots of miles left, \$50 to \$295. \$10 down. West Bros. 'Nash, Inc., 534 Forest Ave., Plymouth. Ph. Ply. 888. tf

'57 Mercury Montclair, 2-door hardtop, radio, heater, auto. trans., whitewalls, padded dash, flow-tone paint, 6,000 miles. \$2,695

1955 Mercury 2-door sedan. Sharp ..... \$1,295

1955 Ford Fairlane sedan. Clean ..... \$1,095

CHEAPIES!

'55 Nash, auto. trans. .... \$195

'53 Kaiser sedan ..... \$95

'50 Ford ..... \$95

'47 Cadillac Convertible .... \$125

**Bob McKanna**  
**Mercury, Inc.**

402 N. MILL ST. PLYMOUTH  
PHONE 3060

'50 DODGE in good condition, \$175. 440 Grace St. Ph. 3023. 14

'56 Ford convertible, Fordomatic. Radio, heater and white side walls ..... \$1,795

'55 Ford Fairlane 2-dr. Fordomatic. R & H ..... \$1,295

'54 Chrysler Windsor 4-door. \$745

'54 Ford 8 cyl. 2-dr. Radio and heater ..... \$595

'51 Chrysler 4-door. Very clean. \$395

**MARR TAYLOR**  
**FORD SALES**

North Center Street  
Phone Northville 644

'52 DODGE 4-dr. R. H. automatic. New tires. Only \$195. G. E. Miller, Sales and Service, 127 Hutton.

'47 FORD station wagon, runs good body needs repairs, \$60. 23875 Haggerty Rd.

**PROMPT**  
**SERVICE**

FINE QUALITY  
LETTERPRESS &  
OFFSET  
PRINTING

When You WANT  
Them!

The  
NORTHVILLE  
RECORD  
Phone 200

## 4-FOR SALE — Miscellaneous

Plumbing Supplies  
At Wholesale Prices  
Buy Direct and Save  
Installation Arranged

20 Gal. Elect. Wtr. Htr. .... \$59.50  
30 Gal. Glass Lined Htr. .... \$79.95  
52 Gal. Elect. Wtr. Htr. .... \$89.50  
5 Ft. Built-in Bathtubs .... \$61.95  
Closets, A Grade ..... \$27.50  
Vanitory Lavatory ..... \$31.50  
Dble. Compt. Lodge Sinks ..... \$20.00  
4 colors to choose  
1/2" Copper Tube, per ft. .... 20c  
Cabinet Ldry. Durotubs ..... \$47.50  
White Closet Seats ..... \$4.50  
Medicine cab., plate glass. .... \$14.50  
3/4" Plastic Pipe, per ft. .... 13c  
Shallow well pumps ..... \$79.95  
Deep Well Pumps ..... \$114.95  
Sump Pumps ..... \$44.50

Largest stock of plumbing supplies in this area, soil pipe, copper tube, faucets, pump controls, valves and fittings, pipe cut to measure, visit our showroom or call us for prices, terms if desired, up to 3 years to pay.  
Plymouth Pbg. and Hig. Supply  
149 West Liberty St.  
Phone Ply. 1640, if no answer, call 3494. Open Fri. eve to 8 p.m. all day Saturday

APPLES. Also tomatoes. You pick. 38445 8 Mile, Livonia.

PEACHES  
Redhaven and Golden Jubilee. Also eating and cooking apples. Foreman Orchards, 3 miles west of Northville on 7 Mile.

REGISTERED English setter pup, 1 yr., 3 mos. old. Ready to hunt. Call Northville 884.

MONTGOMERY oil stove with 5 gal. can and floor board. Complete \$18. Also elec. range, \$20. Stewart Warner wall oil furnace, complete with pipe, tank and stand, \$75. Inside birch door, \$8. 3 combination screen doors, \$10 each. Plymouth 1913-W.

BOXER puppies, AKC registered. Sired by a champion. Light and dark brindle. Call N'ville 2833-J.

FACTORY size drill press, 4 Quick-way grinders, 24 h.p. elec. motor. Can be seen at 42400 Grand River, Novi.

PICK YOUR OWN  
Saturday and Sunday only, tomatoes — early patch and pear tomatoes, \$1.50 bu. Hot peppers, Italian and yellow sweet, \$1.75 bu. Roman, wax and green beans, \$1.75 bu. 28 lbs. Gale's Farm, 38275 W. 6 Mile Rd.

5-FOR SALE — Autos

TRANSPORTATION Specials. Several to choose from, good motors, tires, batteries, etc. Lots of miles left, \$50 to \$295. \$10 down. West Bros. 'Nash, Inc., 534 Forest Ave., Plymouth. Ph. Ply. 888. tf

'57 Mercury Montclair, 2-door hardtop, radio, heater, auto. trans., whitewalls, padded dash, flow-tone paint, 6,000 miles. \$2,695

1955 Mercury 2-door sedan. Sharp ..... \$1,295

1955 Ford Fairlane sedan. Clean ..... \$1,095

CHEAPIES!

'55 Nash, auto. trans. .... \$195

'53 Kaiser sedan ..... \$95

'50 Ford ..... \$95

'47 Cadillac Convertible .... \$125

**Bob McKanna**  
**Mercury, Inc.**

402 N. MILL ST. PLYMOUTH  
PHONE 3060

'50 DODGE in good condition, \$175. 440 Grace St. Ph. 3023. 14

'56 Ford convertible, Fordomatic. Radio, heater and white side walls ..... \$1,795

'55 Ford Fairlane 2-dr. Fordomatic. R & H ..... \$1,295

'54 Chrysler Windsor 4-door. \$745

'54 Ford 8 cyl. 2-dr. Radio and heater ..... \$595

'51 Chrysler 4-door. Very clean. \$395

**MARR TAYLOR**  
**FORD SALES**

North Center Street  
Phone Northville 644

'52 DODGE 4-dr. R. H. automatic. New tires. Only \$195. G. E. Miller, Sales and Service, 127 Hutton.

'47 FORD station wagon, runs good body needs repairs, \$60. 23875 Haggerty Rd.

**PROMPT**  
**SERVICE**

FINE QUALITY  
LETTERPRESS &  
OFFSET  
PRINTING

When You WANT  
Them!

The  
NORTHVILLE  
RECORD  
Phone 200

## 5-FOR SALE — Autos

'49 FORD Tudor. Dependable transportation, \$125. Call N'ville 2991 before Sunday.

'54 FORD by owner, excellent condition and clean. Custom line tudor. Northville 2798.

'56 PLYMOUTH tudor V-8. Just like new. Hurry, this one won't last, \$1,495. G. E. Miller Sales and Service, 127 Hutton.

6-FOR RENT

COMFORTABLE older 7-rm. (three bedrooms) one-floor home on Ridge Rd. \$100 per month. Northville Realty. Ph. 129.

SLEEPING room for gentleman. Phone 2929. tf

SLEEPING room for a woman. 330 Eaton Drive. Call 711-J.

PLEASANT room, convenient bath. Hall entrance. 236 S. Center. Ph. 309.

ROOMS above Northville Restaurant and bar. By week or night. Ph. 9173. 10tf

WOODLAND LAKE  
TRAILER COURT

Only court with beautiful swimming beach in Brighton. Reasonable rates. Phone Academy 9-6303

8005 West Grand River Ave. - US-16 13

FURN. 2 B.R. home, 2 blocks



## CLASSIFIED ADS

(Continued)

### 14-BUSINESS SERVICE

**BUILDING**, remodeling, old or new. Masonry, aluminum siding. Estimates given on small or large jobs. Phone 897 or 528-R. C. Oscar Hammond, 511 N. Center. 11

### FENCE BUILDING

OF ALL KINDS  
Free Estimates  
Phone Northville 1233-J2

**CLYDE'S** Painting and Papering. My service—your home beautiful, 304 Plymouth Ave. Phone 306 Northville, Michigan. 19tf

**DOAN'S** Second Hand Store, 44480 Grand River, Novi. Furniture, stoves, refrigerators, motors, pumps, etc. We buy, sell or trade. Phone 2942. 35tf

**TREE** and stump removal. Also trimming, surgery and planting. Insured. Call Northville Tree Service for free estimates. Phone 1465 day or night. 46tf

**MOVING FURNITURE**—Pianos and electrical appliances. Call 692 or 2834-W. 17tf

**KIRBY** Vacuum Sales and Service. Vacuum cleaners, power polishers, power tools. 27430 West Seven Mile. Days: Kenwood 7-3232. Nights: Greenleaf 4-4091. 26tf

Authorized  
**TV SERVICE**  
We service all makes of  
TV Sets and Radios  
• Prompt Service  
• Reasonable Rates  
**NORTHVILLE ELECTRIC  
SHOP**  
153 E. Main Phone 184

### ELECTRICAL WIRING AND CONTRACTING

Commercial & Residential  
— Estimates —

**Northville  
Electric Shop**  
153 E. Main Northville  
Phone 184

Check Your Supply of Printing  
Needs BEFORE You Run Out  
We Print Them All  
PHONE 200

the all new **EDSEL**  
is coming to **WEST BROS.**

ALL OUR NEW, 1957

## RAMBLERS MUST BE SOLD

• SEDANS • STATION WAGONS  
AT SACRIFICE PRICES!

TAKE ADVANTAGE OF THIS  
CLEARANCE NOW... ONLY A  
FEW DAYS REMAIN TO MOVE  
OUR COMPLETE STOCK

### — USED CARS —

Due to the outstanding bargains we have  
been offering on our Nash and Rambler  
autos our used car lot is full of trade-ins!  
If you are in the market for a top used car  
bargain — see us today!

**WEST BROS. NASH, INC.**

534 Forest Plymouth Ph. 888



**NOT TOO CLOSE, MAC** — Henry McCalla, owner of "Mac's Berry Patch" on Novi road, edges up to a swarm of some 50,000 bees on an old plow wheel in a nearby field. "Mac" says it's the first time he has known bees to swarm outside, where they are exposed to the elements. He has some 30 swarms of his own, used in pollinating his berries.

The smooth purring of the motor  
often lures a tired driver into a cat-  
nap. Keep your head up and your  
eyes open, even a cat doesn't nap  
on the move.

**DR. L. E. REHNER**  
OPTOMETRIST  
Phone Plymouth 433  
FEDERAL BUILDING  
243 Penniman — Plymouth  
— HOURS —  
Monday, Tuesday, Thursday,  
1 P.M. to 8 P.M.  
Wednesday, Friday, Saturday,  
10 A.M. to 5 P.M.

## Northville Public Schools SEPTEMBER OPENING

### REGISTRATION NOTICE

August 27-28:

**ELEMENTARY CHILDREN (K-6)**  
register at Main street grade school.  
Hours 9-12; 1-4.

**HIGH SCHOOL (7-12)** register at high  
school office. Hours 9-12; 1-4.

### BOOKSTORE

August 27-28:

Location: High School gym.  
Hours 9-12; 1-4.

### CLASS SCHEDULES

STUDENTS REPORT AS FOLLOWS:

September 4 (Wednesday)  
8:30-12:00, Grades 1-9 (inclusive)

September 5 (Thursday)  
8:30-12:00, Grades K (a.m. group only)  
and 1-6; 10 through 12 (note: grades  
7-8-9 DO NOT REPORT).

September 6 (Friday)  
8:30-12:00 K (p.m. group only) and  
grades 1 through 12

All buses will make regular runs on above  
dates.

September 9 (Monday)  
Regular classes for all grades

### TRANSPORTATION

See page 15 for complete schedule of  
bus runs. Any questions concerning  
transportation should be directed to  
E.V. Ellison, Director of Transportation

### TEACHERS SCHEDULE:

All teachers report at 9:00 A.M. on  
Tuesday, September 3, 1957.

**BOARD OF EDUCATION**  
Nelson C. Schrader, Pres.  
Waldo T. Johnson, V.P.  
Robert H. Shafer, Sec.  
Eural F. Clark, Treas.  
H. Adrian Willis, Trustee

**ADMINISTRATION**  
R. H. Amerman, Supt.  
Kenneth MacLeod, Adm. Asst.  
E. V. Ellison, High School Prin.  
F. Stefanski, Asst. H.S. Prin.  
H. B. Smith, Grade Sch. Prin.  
R. D. Kay, Amerman  
Elementary School Prin.

## DeLaRossa Heads Stylists at Lincoln

The appointment of Don R. DeLaRossa as chief stylist in the Lincoln styling studio and the reassignment of four others within the styling office were announced this week by George W. Walker, vice president and director of styling for Ford Motor company. A native of Indianapolis, DeLaRossa attended John Herron Art Institute and the University of Chicago. He joined Ford Motor company as a senior stylist in 1947 and was executive stylist in the Mercury interior studio prior to his new appointment. He is married and has three children. The family lives in Dearborn.

## USE THIS HANDY GUIDE FOR RELIABLE SERVICES

### BOB'S PAINT SHOP

IN PLYMOUTH

Features A Complete  
line of paints &  
wallpapers for your  
home decorating  
needs!



Famous *Dutch Boy* Paints

WE RENT — Wallpaper Steamers,  
complete equipment for hanging paper.

816 Penniman Avenue Phone Plymouth 92

### FUEL OIL

### C. R. ELY & SONS

COAL & FUEL OIL CO.  
DISTRIBUTOR FOR MOBILHEAT

316 N. CENTER PH. NORTHVILLE 242

### QUALITY PAINTS

### The HARNDEN Paint & Glass Co.

CUSTOM COLORS Mixed While You Wait  
PITTSBURG PAINTS

115 Church St. Northville Phone 873-M

### REFRIGERATION SERVICE

### FRISBIE REFRIGERATION

COMMERCIAL & DOMESTIC

WE SERVICE ALL MAKES, TYPES and SIZES  
NORTHVILLE 1185 Nights, Sun. & Holidays MA-4-3411

### SOFT WATER

### CULLIGAN SOFT WATER

SERVICE

W. V. CLARKE, Owner

1376 S. MAIN Plymouth Phone 707

### FUEL OIL



### STANDARD OIL CO.

CLAYTON MYERS, Agent  
AUTOMATIC KEEP-FILL SERVICE  
CLAYTON MYERS, Agent

359 FIRST ST. PH. 316

### DRIVE-IN FOOD

### THE HAY LOFT DRIVE-IN

STEAKS N CHOPS — Short Orders — FRIED CHICKEN  
Grand River, 2 Miles East of Novi Road  
Curb Service - 8 p.m. to 1:30 a.m. — Open Sundays - 11 a.m.  
BETTY HAY — Prop.

### AUTO SERVICE

### VERN & MORRIS SERVICE

• Automotive Repair • Lubrication  
We Give S & H Green Stamps

310 E. MAIN ST. NORTHVILLE PHONE 2954

### HARDWARE

### Novi Hardware & Appliances

• Builders Hardware • Fence  
• Plumbing & Electric Supplies  
• Television — Radio Sales and Service  
• Electric Appliances • Sporting Goods  
1/2 Mile East of Novi Road Phone 242

THE NORTHVILLE RECORD—Thursday, August 22, 1957—7

## USE THIS HANDY GUIDE FOR RELIABLE SERVICES

Proof is  
in the  
tasting

Eat here once... you'll come  
back always... for lunch,  
dinner or snack.

AIR CONDITIONED  
**OLD MILL  
RESTAURANT**  
130 E. MAIN Northville PH. 9192

### AUTO SERVICE

### ATCHINSON SERVICE

• WASHING - POLISHING • TIRES - ACCESSORIES  
• GOOD GULF LUBRICATION

WRECKER SERVICE  
COR. MAIN & WING STS. NORTHVILLE PHONE 747

### MONUMENTS

### ALLEN MONUMENT WORKS

You can rely on our counsel in choosing  
a memorial of enduring beauty

580 Plymouth Ave. Northville Phone 192

### PLUMBING & HEATING

### S. & S. Plumbing & Heating

Sales & Service

Prompt Plumbing and Oil Burner Service  
43339 Grand River, Novi Phone 1497 or 87-J

### DECORATING

### THE DECORATOR

Bruce McAllister

A STUDIO FOR MODERN LIVING

• WALLPAPER • PAINTS  
Grand River at Novi Rd. Phone 992-W2

### INCINERATORS-GRILLS

ATTRACTIVE, LIFE-LONG CONCRETE  
INCINERATORS and BARBECUE GRILLS

MANUFACTURED IN NORTHVILLE BY  
**Leslie L. Diesem Company**  
19540 GERALD PHONE 1393

### AAA WRECKER

### HARAWOOD'S SERVICE

OPEN 24 HOURS

NOVI ROAD AND GRAND RIVER  
PHONE NORTHVILLE 452

### TELEVISION REPAIR

### NORTHLAND

TELEVISION & RADIO SERVICE

WE REPAIR ALL MAKES AND MODELS

105 E. WALLED LAKE DRIVE Market 4-3771

### DRY CLEANING

### PERFECTION LAUNDRY

AND DRY CLEANING

Featuring 1-Day Service

DRIVE-IN CONVENIENCE MAIN & WING STS.

### REAL ESTATE

### GARRETT BARRY

To Buy Or Sell — You'll Do Better With Barry

116 E. MAIN ST. NORTHVILLE  
PHONE 353



## West Bros. Agency To Sell Edsel Line

The Ford Motor company's new Edsel line of automobiles, scheduled to be introduced in September, will be sold and serviced in the Northville area by West Bros. Edsel, Inc.

Announcement of the agreement with Wilbert West was made last week by Harley F. Riley, Detroit district sales manager of the Edsel division.

The West Bros. showroom is located at 534 Forest avenue in Plymouth and has been operating as a Nash and International Harvester dealership. President of the corporation is Wilbert West; A. R. West is vice president; Earl West, secretary, and Joseph West, treasurer. Wilbert will act as general manager of the dealership and T. C. White, service manager. The agency will continue to handle the International truck line.

The four series — Ranger, Pacer, Corsair and Citation — will be marketed initially by an organization of some 1,200 to 1,500 dealers. Eventually, there will be between 2,500 and 3,000 dealers. \$250,000,000 has been invested to produce the new line.

Included in the 18 models are two convertibles, one in the Pacer series and the other in the Citation, plus a full line of two- and four-door sedans and hardtops and a line of five station wagons.

Production started Monday, July 15 at four assembly plants — Somerville, Mass.; Mahwah, New Jersey; Louisville, Kentucky, and San Jose, California. Two other assembly plants — Wayne, Michigan, and Los Angeles — will begin building Edsels at a later date.



**CHANGING SCENE** — It was only a couple of weeks ago that National Bank of Detroit announced plans for a permanent branch office in Novi, but already the foundation is in and the walls are more than half completed. The new facility will offer drive-in service as well as the usual lobby service. Completion is scheduled early next year.



**COUNCIL CAPERS** — Councilmen Ed Welch (left) and John Canterbury twirl their wives around the "floor" at the outdoor dance sponsored last Saturday by the Northville Modified Auto club. Held under the stars in the Northville autocade, the dance earned nearly \$300 for the young auto clubbers, according to patrolman Eugene King, club advisor. Bob Williams and the Northville high school dance band provided the music.

**ASTHMA NEFRIN**  
For Quick, Safe  
**ASTHMA RELIEF**  
Wherever you are...  
Whenever you need it  
**POCKET SIZE NEBULIZER**  
MAINVILLE'S  
NORTHVILLE DRUGS  
134 E. Main Northville  
Phone 238

## DYING IN PEACE

Sometime ago a magazine article stated to the effect that since we have gotten rid of the generation of hell fire preachers, people die in much more peace. Now this may be a worthy achievement if death ended all. God's Word of authority tells us that when man dies he passes from this life into another life. He does not sleep in unconscious sleep until some future resurrection after which everyone shall go into heaven. When a person who has no Saviour dies he goes immediately into a place of terrible suffering. Jesus Christ made this plain in Luke 16:19-31. In the final resurrection he shall be resurrected and cast into eternal hell. (Revelation 20:12-15). Those who have a Saviour will pass immediately into the presence of the Lord where there is blessing for evermore. At the first resurrection his body shall be raised, reunited with his soul, reign with Christ during the Millennial reign and then enjoy eternity with God forever. To have one's conscience soothed by false hopes in the hour of death is terrible deception. How much better it would be to face the fact of one's sin, repent and receive the Saviour so that there may be real peace in the hour of death. What kind of peace will you have?

Bible School ..... 10 a.m.  
Morning Worship ... 11 a.m.  
Evening Worship .. 7:30 p.m.

Peter F. Nieuwkoop, Pastor

**First Baptist Church**  
NORTHVILLE

## Dempsey B. EBERT

Funeral Home

OXYGEN EQUIPPED  
AMBULANCE

404 West Main Street

Phone Northville 48

## Farmer JOHN COCKRUM'S Market

Our Specialty  
Now In Season ...

HOMEGROWN  
Honey Rock Melons  
10 for \$1.00

WORM-FREE  
Sweet Corn  
For Freezing Picked fresh daily

Tomatoes  
97c Basket

Cucumbers  
Fresh picked 7-25c

Watermelon  
79c ea. 2 for \$1.25  
26 Lb. Average

**All Farm Fresh Fruits & Vegetables**

42409 GRAND RIVER — NOVI

OPEN DAILY 8 A.M. - 11 P.M.

¼ Mile East of Novi Road on South Side

## Clearance

POWER  
LAWNMOWERS  
SLASHED!

\$49.50  
UP

\* JACOBSEN \* COOPER  
\* ECLIPSE \* GOODAL & ESKA

**RIDING MOWER**  
21" CUT FAIRBANKS MORSE  
REG. \$225.00 VALUE  
NOW ONLY **\$95**

ALSO BOATS, MOTORS, MARINE  
HDWE., TILLERS, FERTILIZER,  
LAWN SEED, AND USED EQUIP-  
MENT.

Everything Must Be Sold! Save at ...  
**HOFFMAN & HOLDSWORTH CO.**

201 W. ANN ARBOR RD.  
OPEN SUN. 10 A.M.-4 P.M.

PLYMOUTH 2222  
EVENINGS 8 P.M.

## Men and Women ★ In Uniform ★

Three Northville Marine reservists are now undergoing two weeks of intensive amphibious training with "Detroit's Own" 5th infantry battalion.

They are TSgt. Francis P. Palmer and Pfc. Walter E. Palmer, both of 112 Walnut, and Pvt. David K. Waterloo, 134 Rayson.

The training began Monday and will last through August 30.

Held at the Naval Amphibious Base at Norfolk, Virginia, the training program includes weapons indoctrination and firing, combat tactics, close order drill, and actual amphibious landings.

A night problem will be held near the end of the period.

During off-duty hours, the Marines will enjoy such vacation spots as Chesapeake Bay, Virginia Beach, Ocean View and the historic city of Williamsburg.

Army Pvt. Robert H. Clark, 22, son of Mr. and Mrs. Wilson J. Clark, 340 E. Cady street, Northville, recently arrived in Korea and is now a member of the 1st Cavalry division.

Clark, a rifleman in Company B of the division's 19th Regiment, arrived overseas from Fort Ord, California. He entered the Army last January and completed basic training at Fort Carson, Colorado.

Clark was graduated from Northville high school in 1952.

First Lt. Lester A. Tomaszewski, 25, son of Mr. and Mrs. Z. A. Tomaszewski, 25311 Beck road in Novi, recently was graduated from the military medical orientation course at the Army's Medical Service school, Fort Sam Houston, Texas.

The course designed for newly commissioned officers stressed medical service in combat with emphasis on dental field training. Lieut. Tomaszewski is a 1957 graduate of the University of Michigan and a member of Psi Omega fraternity.

## IS IT TRUE?



Our aim is to give you the most efficient service — to assure you of the most satisfaction. Stop in to see us.

**BUILDING**  
ROADS - SEWERS - BASEMENTS  
FOR 19 YEARS

Answer  
FALSE—It refers to degrees of light and shade and color intensity.

**NOVI BUILDING SERVICE**  
NORTHVILLE 783-J  
FARMINGTON GR 4-6695  
44109 GRAND RIVER

## In Wixom Village:

## Area Schools to Open Soon

Mrs. Charles Ware — Market 4-1601

Registration in Walled Lake schools started August 19. Books will be on sale the entire week of August 26 from 8 a.m. until 3 p.m. There are seven elementary, one junior high and one senior high school included in the district.

There will be approximately 200 teachers employed to take care of an anticipated enrollment of 5,500 pupils.

Wixom school teachers are Miss E. Chambers, first grade; Mrs. E. Fox, second grade; Mrs. B. Rentchler, third grade; Mrs. I. Henry, fourth grade; Mrs. M. Sharp, fifth grade; Mrs. E. Ukeet, sixth grade. Secretary is Eleanor Mustener and principal is Mr. B. Dean.

On Sunday, August 11, Mr. and Mrs. Jessie Byrd of Charming road had as their guests Mr. Byrd's sister, Mrs. Eva Hawthorn and son, Russell of Toledo.

Mr. and Mrs. Olle Wahamaki of Hickory Hill have as their guests Mr. and Mrs. Leslie Russell and children from California.

Sister Jean Raphael, O.P. (Dorothy Harris) has returned to Hollywood, Florida to resume teaching after visiting with her parents, Mr. and Mrs. Ed Harris of Pontiac trail.

Mr. and Mrs. Pat Brady of West 8 Mile and Mrs. Charles Ware of Wixom went to Detroit Sunday to watch the Detroit Gaelic football team beat Chicago and win the mid-west championship.

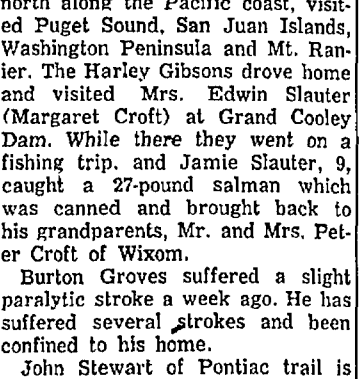
Rev. and Mrs. Bill Green are now on a ten day visit to Orchard Lake. Rev. Green was the guest preacher at Wixom Baptist church Sunday.

Miss Hilda Furman, Mrs. and Miss Lovejoy and Mrs. A. Tripp went to Canada by way of the Ambassador Bridge on August 14. They ate lunch at Kingsville, drove to Leamington, Point Pelee and came home by way of the Blue Water Bridge at Port Huron. They had dinner at the Fisherman's Inn.

Miss Mildred Gibson flew to San Francisco the first week in July where she was met by Mr. and Mrs. Harley Gibson of Halsted road. (Mrs. Gibson is sociology teacher at Walled Lake.) They drove north along the Pacific coast, visited Puget Sound, San Juan Islands, Washington Peninsula and Mt. Ranier. The Harley Gibsons drove home and visited Mrs. Edwin Slaughter (Margaret Croft) at Grand Cooley Dam. While there they went on a fishing trip, and Jamie Slaughter, 9, caught a 27-pound salmon which was canned and brought back to his grandparents, Mr. and Mrs. Peter Croft of Wixom.

Burton Groves suffered a slight paralytic stroke a week ago. He has suffered several strokes and been confined to his home.

John Stewart of Pontiac trail is



**HOW CHRISTIAN SCIENCE HEALS**  
Station  
W H R V  
1600 K.C.  
Also on CKLW at 9:45  
9:00  
A.M.  
Sunday  
at 9:45

suffering from a dose of flu and is confined to his home.

Mrs. Lou Harms of Charming road, who has been ill for several months, is able to attend church again.

Ralph Napier of Grand River has returned from St. Joseph's hospital in Ann Arbor and is able to resume farming. Mr. Napier was hurt in a car collision on Grand River and suffered a fractured jaw, head and abdominal injuries.

## Walled Lake Park Sets Bargain Rates

Bargain rates will be in effect on all adult and kiddie rides at Walled Lake Park on Sunday and Labor Day, September 1 and 2.

Through August everyone purchasing a ticket for any ride will be given a free ticket for either "The Whip", "Merry-Go-Round", "Miniature Train" or "Rocket Ship". These complimentary tickets will be good only on Sunday and Labor Day (Monday), September 1 and 2.

Walled Lake Park will be in full operation on September 1 and Labor Day with its modern adult and kiddie rides, twin picnic gardens and picnic grove, baseball diamonds, speed boats, row boats and fishing boats, sand bathing beach and modern bath house, laugh-packed amusements and roller skating.

## Travel Centre

SERVING YOUR COMMUNITY  
FOR TRAVEL AT HOME & ABROAD

AIR • STEAMER • CRUISES  
TOURS • HOTEL • RESORT  
CAR HIRE • HONEYMOON  
SIGHTSEEING • RESERVATIONS

AT NO EXTRA COST

MAYFLOWER HOTEL

PLYMOUTH, MICHIGAN TEL. 3586

## STANLEY GIERCZYK

Mr. Gierczyk, who lived at 48762 West Nine Mile road, died August 15 at Beyer Memorial hospital in Ypsilanti. He was 70 years old, born in Poland on April 27, 1887 to Joseph and Maria Gierczyk. A retired Ford Motor company employee, he was a member of Our Lady of Victory church. He is survived by his wife, Helen. Rosary was said Friday evening at the Casterline Funeral home. Funeral services were held Saturday from Our Lady of Victory church, Father John Wittstock officiating. Burial was in Holy Sepulchre cemetery.

## ORPHA D. ALEXANDER

Mrs. Alexander died Monday, August 19 at Sessions hospital in Northville at the age of 61. She had lived at 46425 West Seven Mile road since 1949 when she moved from her former home in Grosse Pointe Farms. Mrs. Alexander was born in Cedar township, Knox county, Galesburg, Illinois on April 14, 1896 to Henry and Clara Hutson Dredge. Besides her husband, Joseph, she is survived by a daughter, Miss Betty Alexander of Highland Park and brothers Fred Dredge of Galesburg, Floyd and Orville and George Dredge of Knoxville, Illinois. Mrs. Alexander was a member of the First Presbyterian church of Northville. The body lay in state at the Casterline Funeral home until Wednesday, when it was shipped to the Klink mortuary in Knoxville. Funeral services will be held Friday in Knoxville at 1 p.m., Rev. John Clark officiating.

## Parts for all Cars -

EXCHANGE . . . ENGINES,  
FUEL PUMPS, GENERATORS,  
STARTERS, CLUTCHES.

Complete Machine Shop  
Service . . . Engine  
Rebuilding

**Novi Auto Parts**

NOVI, MICHIGAN  
Phone Northville 55

## 3 STAR CHAMPIONSHIP MOTORCYCLE RACES

Gen. Adm. \$1.50

Res. Sec. \$2.00

Box Seats \$2.00

Children 50c

(UNDER 12)

A.M.A. SANCTIONED

9 BIG THRILLING EVENTS

**LABOR DAY - MON., SEPT. 2**

Races Begin 2:30 Time Trials 12:30

**NORTHVILLE DOWNS**

Tickets now on sale at track or phone N'ville. 1140  
Ply. 1892-W2

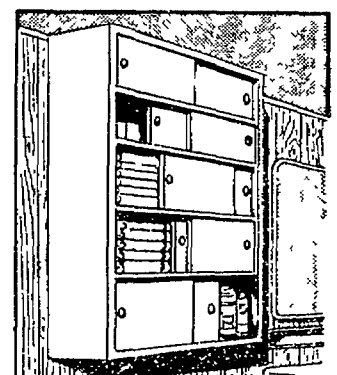


## IT'S EASY TO BUILD WITH PLYWOOD



PLYWOOD Panels are extra strong, easy to use and are available in a variety of wood finishes and thicknesses for every use.

INTERIOR walls, exterior siding, roof and wall sheathing, kitchen cabinets and closets.



EASY TO BUILD WARDROBE  
BY USING PLYWOOD  
YOU CAN DO IT YOURSELF

WHETHER YOU'RE BUILDING A NEW HOME OR REMODELING, THE FRIENDLY CHARM AND LUXURIOUS, ENDURING BEAUTY OF WOOD paneled walls can be yours at surprisingly low cost. . . SEE US FOR HOME PLANS

## NOWELS

**LUMBER & COAL CO.**

BUILDERS' SUPPLIES — HARDWARE

PHONE 30 or 1100

630 Baseline Road

Northville, Mich.



# Dutch Craft Hobby in Salem

"To show that finer things come from Holland than wooden shoes with windmills painted on them" — this is the purpose of the hobby of Mr. and Mrs. D. L. Riddering of Salem.

"We got the idea for collecting and displaying crafts of the Netherlands after seeing a Dutch exhibit including just such wooden shoes," Mrs. Riddering says, "and decided we would like to have an exhibit of our own showing the finer work of Dutch craftsmen."

After entering the Riddering front door at 9706 West Six Mile road — it's a Dutch door, of course — one sees a world of charm — dozens of objects made by skilled artisans after years of apprenticeship and practice.

Wooden bread trays inscribed "Give us this day our daily bread" are displayed with bread boards of matching motif and

knives with matching, hand-carved wooden handles.

Glowing pewter — pitchers, tea sets and trays both of contemporary and period design, reflect the skill that went into their creation.

And, of course, Delft china and Friesian ware, each blue detail of design hand-painted by craftsmen whose joy comes from creating things of beauty.

There are also jewelry, block-

printed fabrics, fine Dutch chocolate and cookies — even toys for the children — on display in the Riddering home. All items, including many varieties of spring bulbs, are for sale, but the Ridderings are careful to point out that financial gain is secondary.

Interest in Holland and its contributions to the world are natural for both the Ridderings. Though Mr. Riddering is a native of the United States, he was born in a small Dutch settlement near Holland, Michigan, and studied Dutch language, literature and philosophy at the University of Amsterdam on a Fulbright scholarship from 1949 to 1951. He is now a language teacher at Cooley high school in Detroit where he specializes in teaching Latin.

While in the Netherlands, he met and married a Dutch girl whose first name is Ali (the Dutch counterpart of Alice). Both went to Poitiers, France to study French for a year.

Before moving to Salem last December, the Ridderings and their two children, Hannah, 5, and Emilie, 2½, lived in Wayne.



YEARS OF PREPARATION were spent by the artist who painted this Delft pitcher shown by D. L. Riddering as well as the other pieces shown on the shelves. On the bottom shelf are more modern examples of Dutch ceramic ware.



LITTLE DUTCH GIRLS — Hannah and Emilie Riddering are lucky to have hand-made toys and drinking cups — examples of both the wood-carvers art and an old formula for a type of ceramic-ware.

## The Northville Record

THE OLDEST WEEKLY NEWSPAPER IN WAYNE COUNTY — EST. 1868 Thursday, August 22, 1957—9



THE OLD AND NEW—Both made of pewter and hand-crafted, the wine pitcher held by Mrs. Riddering and the graceful, modern pitcher shown by her husband are both examples of a practiced Dutch craft.

**Northville Lodge,  
No. 186, F. & A. M.**  
REGULAR MEETING  
Second Monday of each month  
**LAWRENCE MILLER, W.M.**  
**R. F. COOLMAN, Secretary**

### VAL C. VANGIESON VETERINARIAN

50196 PONTIAC TRAIL — WIXOM, MICH.  
Days & Evenings MA-4-2104 Sunday by Appointment

have a happier  
holiday...  
phone ahead



Enjoy your carefree holiday trip. Don't let uncertainty spoil it. Make sure of your reservations by Long Distance before you leave.

Or, if you're going visiting, let the folks know by Long Distance when to expect you. Especially if you've made last-minute changes in your plans. Then they won't worry if you're late.

Long Distance is fast and the cost is low. You can call places a day's drive away for about a dollar.

Don't wonder. Don't worry. Call and be sure.

MICHIGAN BELL TELEPHONE COMPANY

Owning a Chevy's the only way  
to have all these fine things



Beautifully built and shows it—the new Chevrolet Bel Air Sport Sedan with Body by Fisher.

You'll find that Chevy's the only low-priced car with any of them... the only car at any price with all of them!

**BODY BY FISHER.** Here you see the solid construction and close fittings, the fine craftsmanship that the other low-priced cars can't quite seem to match.

**SHORTEST STROKE V8.** This one turns raw horsepower into pure pleasure with a super-efficient design that's years ahead of other V8's in Chevrolet's field.

**RACE-RACE STEERING, STANDARD.** As smooth-working as steel balls bathed in oil! Extra-easy handling begins here!

**TRIPLE-TURBINE TURBOGLIDE.\*** There's not even a hint of hesitation as triple turbines take you smoothly from a standstill to cruising speeds.

**A BIG ASSORTMENT OF SPECIAL FEATURES.** Like Safety Plate glass all around; crank-operated vent windows; extra-long outrigger rear springs; the easier loading advantage of a low-level trunk ledge! Your Chevrolet dealer's the man to see.

\*Optional at extra cost.



MORE PEOPLE DRIVE CHEVROLETS THAN ANY OTHER CAR

See Your Local  
Authorized Chevrolet Dealer



Only franchised Chevrolet dealers display this famous trademark

**10 GALA DAYS**  
**MICHIGAN AGRICULTURAL STATE FAIR**

**MICHIGAN'S BEST LIVESTOCK and FARM PRODUCTS**

Junior Show	Art Exhibit
Home Arts	Old Time Dancing
Cooking School	Beauty Queens
Auto Show	75 Bands
Aviation Show	Drum Majorettes
Fashion Show	Parades

**Farm Fun Frolies—Sept. 3, 4 & 5—Coliseum**  
Many other contests and events  
**U.S. W.A.G. BAND—2 Free concerts daily**

**A TREMENDOUS COLISEUM SHOW**

<b>First Show</b>	<b>Second Show</b>
JOHNIE RAY • EYDIE GORME	GEORGIA GIBBS • GUY MITCHELL
BILL HALEY and HIS COMETS	FONTANE SISTERS
	JERRY MURAD'S HARMONICATS

**First and Second Shows**

BILLY WARD and HIS DOMINOES • THE HILLTOPPERS • TYRONES  
RHYTHM KINGS • SAMMY SHORE • ROY TRACY M.C. • HERSCHEL LEIB & ORCHESTRA

Gen. Admission 75¢  
Children 14 and under FREE!

**AT THE GRANDSTAND**  
RIN TIN TIN MOVIELAND ANIMAL STARS  
LEO CARILLO RACING MULES  
3 AUTO RACES CANADIAN HELL DRIVERS

**AUG. 30 SEPT. 8**  
**DETROIT**



You'll be **AMAZED** at what you save!

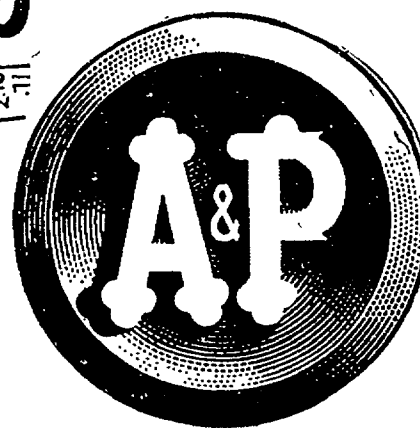


"SUPER-RIGHT", BEST BLADE CUTS

# Chuck Roast

LB. **35¢**

COME SEE . . . YOU'LL SAVE AT A&P!



OVEN-READY—18 TO 22 POUNDS

## Turkeys

LB. **37¢**

Canadian Style Bacon	"SUPER-RIGHT" END PORTION	LB.	85c
Canned Hams	SOUTHERN STAR BRAND	6-LB. CAN	4.99
Beef Roasts	"SUPER-RIGHT" ARM OR ENGLISH CUTS	LB.	49c
Grand Duchess Steaks		11-OZ. PKG.	53c

**LUNCHEON MEATS** SPICED LUNCHEON COOKED SALAMI PICKLE & PIMENTO OLD FASHION  
ONLY **49c** LB.

"SUPER-RIGHT"—THICK-SLICED

## Bacon

2 LB. PKG. **1.19**

DEL MONTE

Pineapple-Grapefruit

## Drink

3 46-OZ. CANS **79¢**

A&P FANCY, WHITE MEAT

## Tuna Fish

3 7-OZ. CANS **79¢**

YOUR CHOICE

Match or Mix

- A&P—16-OZ. CANS FRENCH STYLE GREEN BEANS
- SULTANA—15½-OZ. CANS WHOLE GREEN BEANS
- A&P—16-OZ. CANS ALL-GREEN LIMA BEANS
- DEL MONTE—16-OZ. JARS WHOLE BEETS
- DEL MONTE—16-OZ. JARS SLICED BEETS
- LIBBY'S—16-OZ. CANS GARDEN SWEET PEAS

6 FOR **1.00**

IT'S NATIONAL SANDWICH MONTH

A&P HAS THE EASY FIXING

JANE PARKER SLICED—DATED, FRESH

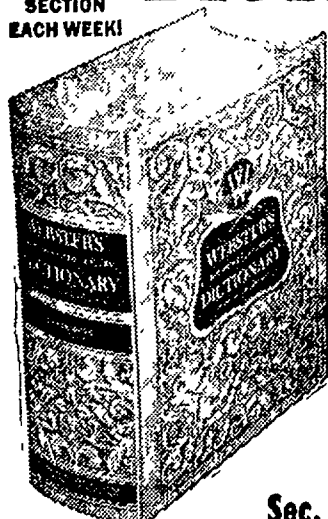
**White Bread 2 1½-LB. LOAVES 37¢**

**Boiled Ham** "SUPER-RIGHT" CENTER CUTS . . . 6-OZ. **49c**

**Sharp Cheddar** WISCONSIN AGED CHEESE . . . LB. **59c**

**Cheez Whiz** KRAFT'S . . . 16-OZ. JAR **53c**

**WEBSTER'S** New 20th Century UNABRIDGED **DICTIONARY** 15 SECTIONS and a 2-Part Binder



SECTION No. 1 Only **25c** with \$2.50 in purchases

SECTIONS 2-15 and each part of the 2-part binder Only **89c** each WITH ANY PURCHASE

SECTION No. 7 NOW ON SALE! Sec. 1 to 6 Are Still on Sale!

IONA BRAND

**Peas** . . . . . 17-OZ. CAN **10c**

**Chocolate Syrup** HERSHEY'S . . . 2 16-OZ. CANS **39c**

**Cake Mixes** ANN PAGE—WHITE, YELLOW, DEVIL'S FOOD OR SPICE . . . 4 20-OZ. PKGS. **95c**

**Salad Dressing** SULTANA . . . . . QT. JAR **35c**

A&P RED, SOUR PITTED

**Cherries** 3 16-OZ. CANS **49c**

**Bartlett Pears** IONA . . . . . 3 29-OZ. CANS **89c**

**Elberta Peaches** A&P BRAND . . . . . 3 29-OZ. CANS **95c**

**Kraft's Shortening** 10c OFF LABEL . . . . . 3 LB. CAN **79c**

**Pork & Beans** SULTANA . . . . . 3 16-OZ. CAN **10c**

**Grapefruit Sections** A&P . . . . . 3 16-OZ. CANS **49c**

**Hawaiian Punch** . . . . . 3 46-OZ. CANS **1.00**

**Evaporated Milk** WHITE HOUSE . . . 6 CANS IN CTN. **79c**

**Sail Detergent** . . . . . GIANT PKG. **53c**

MICHIGAN GROWN, HALE HAVEN

**Peaches** 5 LBS. **49c**

Just Right For Canning . . . . Bushel **4.39**

SWEET AND JUICY—BIG SIZE 6

**Honeydew Melons** ONLY **59c**

**Seedless Grapes** BIG AND LUSCIOUS LB. **19c**

**Indiana Potatoes** WASHED, BRUSHED 10 LB. BAG **49c**

**Duchess Apples** NEW CROP . . . 3 LBS. **35c**

**Cantaloupes** VINE RIPENED, 27-SIZE 3 FOR **95c**

**Blueberries** MICHIGAN GROWN . . . . . PINT BOX **29c**

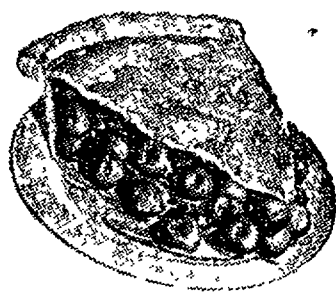
**Nectarines** LARGE AND JUICY . . . . . LB. **29c**

**Yellow Onions** MICHIGAN NEW CROP 3 LB. BAG **29c**

**Cashew Nuts** A&P BRAND . . . . . 12-OZ. BAG **59c**

IT'S CHERRY PIE TIME!

TRY A SWEET, JUICY, FLAKY-CRUSTED JANE PARKER, REGULAR 55c VALUE



**Cherry Pie** THIS WEEK ONLY **39c**

MARVEL—VANILLA OR NEAPOLITAN

## Ice Cream

½-GAL. CARTON **59c**

**Sunnyfield Butter** BEST QUALITY POUNDS **69c**

**Cottage Cheese** RISDON'S CREAMY 30-OZ. CTN. **43c**

**Fresh Eggs** SUNNYBROOK SMALL GRADE "A" . . . . . DOZ. **37c**

**Popsicles** OR PUDGESICLES . . . . . PKG. OF 6 **29c**

**Swiss Cheese** WISCONSIN, SLICED LB. **65c**

JANE PARKER, MOIST, MEDIUM SPICED

## Spanish Bar

ONLY **33c**

**Danish Pastry Ring** . . . . . EACH **29c**

**Sandwich Rolls** SLICED—HOT-DOG OR HAMBURGER . . . DOZ. **29c**

**Old Fashion Cookies** SUGAR OR OATMEAL PKG. **29c**

**Rippled Potato Chips** FOR DIPPING . . . 12-OZ. BOX **59c**

**Orange Delight Cake** . . . . . 6½-IN. SIZE **59c**

All prices in this ad effective thru Sat., Aug. 24th

AMERICA'S FOREMOST FOOD RETAILER... SINCE 1859

**A&P Super Markets** THE GREAT ATLANTIC & PACIFIC TEA COMPANY

## Novi Little League to Vie In Playoffs Next Week

The Paragon Steelers have won the Novi Little League crown, but the season isn't quite over yet.

All four Little League teams will compete in a three-game sudden-death playoff series next week to determine the Novi "world series" champion.

### Watcha Know! Football Already

You couldn't prove it by the weatherman, but football time is coming up in a hurry.

Grid activity at Northville high school will begin next Tuesday and Wednesday when varsity equipment is issued in the Mustang locker room.

Reserve candidates will get their equipment next Thursday and Friday (August 29-30).

Football physicals are also scheduled for next Thursday and Friday, and coach Ron Schlapper will meet his charges for the first time at a team meeting next Friday at 10 a.m. in the community building.

The squad's first practice is scheduled for Labor Day, with a scrimmage against Belleville set for September 14 in Northville.

The Mustangs — defending champions of the Wayne-Oakland league — open their season September 20 against Plymouth at Ford Field.

Coverage of the 1957 NHS football season will begin next week.

Paragon and Young Door will play Monday and Fiberglass and National Bank will meet Tuesday. The winners of the two games will vie for the title Friday.

In final games last week, fast-finishing Young Door knocked off champion Paragon, 4-3, as Dennis Marshall struck out 14 and held league-leading batter Jeff Crawford hitless. John Walters, on the mound for Paragon, allowed only three hits in losing.

Fiberglass won its final game by downing National Bank, 9-4. Ralph Caligiuri gave up seven hits and whiffed 7 for the Sluggers.

Paragon dropped National Bank, 8-6, Monday in making up a game postponed by tornado warnings on June 10.

### W-O Control Board To Name Officers

The Wayne-Oakland league board of control is meeting in Brighton today to name new officers and discuss league activities for the coming year.

The board — composed of principals of the eight W-O schools — sets policy for all inter-league activities, including athletics, dramatics, student council and other student activities.

Northville will be represented by NHS principal E. V. Ellison.

## Recreation Program Ends With One Last Big Splash

The 1957 Northville recreation program ended on a wet and happy note Friday as scores of Northville and Novi youngsters splashed their way to some 125 prizes in the annual water carnival at Whitmore lake.

Children from seven years on up competed in wading and swimming races, sponge-chasing, watermelon diving, canoe boxing, and a variety of other water games.

When it was over, these youngsters had won prizes:

Swimming Races

Girls 7-8: Jane Jerome, Roxanne Atchison

Boys 7-8: Mike Mahoney, Bill VanEe

Girls 9-10: Martha Terry, Judy Shoner

Boys 9-10: Bill Stroud, Gary Stobbe, Frank Pauli

Girls 11-12: Rhonda Atchison, Jo Ann Wood, Donna Richardson

Boys 11-12: Bob Boyle, Dennis Johnston, Craig Bell

Boys 13-14: Steve Juday, Chuck Elwell, Dan Pattison

Girls 15-16: Mary Welch, Mary Hill, Nella Lusk

Boys 15-16: Jo Gotro, Bob Ritter, Brian Pretzger

Girls 17-18: Ardyce Atwood

Greased Watermelon Dive

Girls 10-12: Carol Leavenworth

Boys 1-12: Steve Juday

Girls 13-14: Mildred Lusk

Boys 13-14: Larry Nitzel

Girls 16 and over: Ardyce Atwood

Wading Races

Boys and girls 7 and under: Jane Jerome, Gary Nitzel, Mike Conley

Sponge Contest

First place: Tim Ling, Gary Nitzel, Jim Horton, Cindy Smith, Larry Thibos

Second place: Nancy Bosak, Susan Hill, Susan Conley, Terry Frazer, Roxanne Atchison

Third place: Shirley Lamp, Larry Horton, Bruce Gryse, Ricky Parmenter, Mike Terry

Spoon Race

First place: Mike Terry, Ricky Parmenter, Bruce Gryse, Larry Horton, Shirley Lamp

Second place: Susan Bosak, Norbert Parent, Tim O'Fallen, Maureen O'Fallen, Mike Conley

Third place: Earl Leavenworth, Mike Wilbur, Charles Konopaski, Betty Jo Terry, Bill VanEe

Canoe Racing

Boys 11-12: (1) Craig Bell and Jim Juday; (2) Ernie Lamp and Tom Long; (3) Jim Drew and Ray Dockson

Boys 13-14: (1) Charles Elwell and David Starnes; (2) Jim Higgins and Don Pattison; (3) Steve Juday and Bill Milne

Larry Nitzel; (2) Joe Dick and Larry Pretzger; (3) Dale Schultz and Mike Cassie

Girls 11-12: (1) Jennifer Radloff and Connie Harms; (2) Vicki Harrison and Rhonda Atchison; (3) Donna Richardson and Carol Johnson

Girls 13-17: (1) Elsie Sedan and Mary Lamp; (2) Mary Hill and Ardyce Atwood; (3) Mary Welch and Judy Drew

Canoe Boxing

Bill Milne and Steve Juday

Dennis Johnston and Gary Gryse

Rick Reitzke and Richard Burton

Don Pattison and Jim Higgins

Larry Angove and Bill Lusk

Tom Long and Ernie Lamp

Brian Penn and Robert Bosak

Greg Pretzger and Dick Bailey

Girls: (1) Mary Hill and Ardyce Atwood; (2) Mary Welch and Judy Drew

**M.J. WILLING** BUILDING CONTRACTOR LICENSED & INSURED **NORTHVILLE 486** MODERNIZATION, GARAGES, ADDITIONS, etc.

Add protective beauty with...

**New AWNINGS** FREE ESTIMATES

• CANVAS • ALUMINUM  
TARPAULINS TRUCK COVERS

STORAGE & REPAIR

**DAHL AWNING SERVICE**

7440 SALEM RD. PH. 658 1 Block N. of 5 Mile Rd.

**FACTS ABOUT A&P's "SUPER-RIGHT" BEEF . . .**  
"SUPER-RIGHT" IS FULLY MATURED, GRAIN-FED BEEF  
ONE HIGH QUALITY. Selected for superb taste and tenderness

NOT BABY BEEF  
OR BUDGET BEEF  
OR RANGE BEEF



# A Banner Year for Baseball

Major league scouts would do well to take a look around Northville and Novi.

The two communities had 10 baseball teams competing this summer, and four of them won championships.

In Novi, Paragon won the four-team Little League title with a 12-4 record.

In Livonia recreation play, which involved teams from half a dozen surrounding communities, Northville squads took the crown in two of their three leagues.

The Northville Braves (14-1) won the midget title, and the Class E squad topped its league with an 8-0 record. The Class F team came in second in its league (9-2) and

the midget Orioles placed third (8-7) in their division.

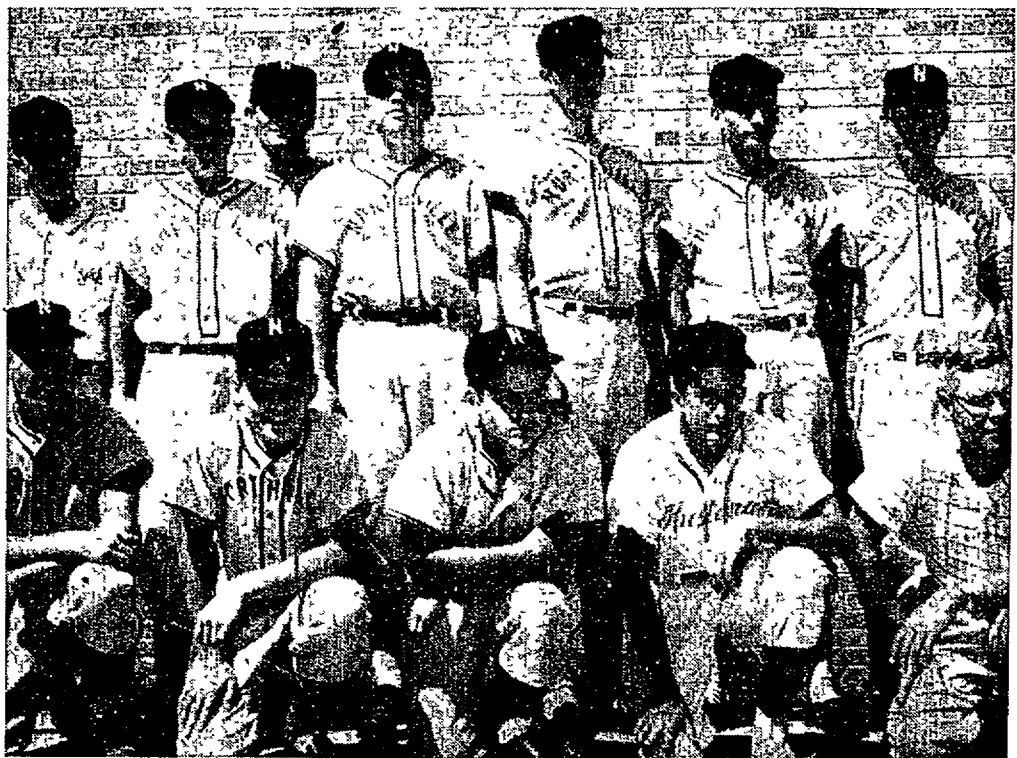
In Class B play, the Northville VFW team completed a 9-1 season and walked off with the Milk Can trophy. The team is composed primarily of Northville coaches and businessmen.

Finally, the Northville Merchants—with a 9-6 record last week — eyed a possible second-place finish in the Inter-County league. At present the Merchants are in fourth.

Pictured below are two of the four championship teams.



**LITTLE LEAGUE CHAMPS** — The Paragon Steelers moved into first place in the Novi Little League on June 21, and relinquished the lead only once before wrapping up the title this week. Front row, left to right: Richard Shoemaker, John Newton, Dan Simensen. Center row: Ron Rice, Jim Mazel, Jim Jones and Jim Driscoll. Back row: Jon Walters, manager Len Berardi, Jeff Crawford, assistant manager Duane Branch and Jack Carter. Missing are: Fred Deuval, Dick Greer, Jerry Killeen, Tom Morrison and Larry Galvin.



**CLASS E CHAMPS** — Northville's Class E squad took the Livonia recreation title with a perfect 8-0 record and went on to the Michigan Recreation Association tournament. Front row, left to right: Kent Frid, Roger Atchison, Joe Kritch, John White and coach Ken Conley. Back row, left to right: Dave Nash, Bob Hilton, Hugh Crawford, Wade Deal, Bill Yahne, Bob Starnes and Bill Juday.

# Trophy Dash Added to Motorcycle Card

Another motorcycle event — the McKanna Mercury Trophy Dash — has been added to the bill for the Labor Day speed classic at Northville Downs.

The trophy dash is the tenth event on the afternoon-long program, which will be highlighted by two 10-lap feature races for two classes of motorcycles.

Sponsored by McKanna Mercury of Plymouth, the trophy dash will pit the days three fastest qualifiers against each other in a three-lap race around the half-mile track. It will be the first event after the time trials.

Promoter Mel Larson, who put on the first annual Northville '100' auto race last month, said the September 2 program now lines up as follows:

- practice: 12:00
- time trials: 12:30 p.m.
- McKanna trophy dash
- three six-lap heat races for class B motorcycles
- three six-lap heat races for class A motorcycles
- 10-lap feature event for class B motorcycles
- 10-lap feature for class A motorcycles

Dan VanVleet, Michigan referee for the American Motorcycle Association, said riders are expected primarily from a three-state area: Michigan, Ohio and Indiana.

VanVleet estimated that more than 30 professional riders will take part, with a good possibility that as many as 50 riders will be on hand.

Ticket windows will open at 11:30 a.m. on the day of the race. Reservations can be made by calling Plymouth 1892-W2 or Northville 1140.

Those ordering in advance can get box seats for the same price as the reserved section while they last.



**HOME-GROWN WHOPPER** — Charles Johnson, 12, thought he had a whale on the line while fishing at Waterford lake last week. But it turned out to be a gold carp instead — though a mighty healthy one. It was nearly 18 inches long and weighed three pounds. Charles' parents are Mr. and Mrs. Charles Johnson, 18800 Northville road.

## Class E Team Out of Tourney

Northville's last entry in post-season tournament play has hung up its spikes for another year.

The Northville Class E team — champions of its regular-season division — tumbled in the second round of Michigan Recreation association tournament play last week.

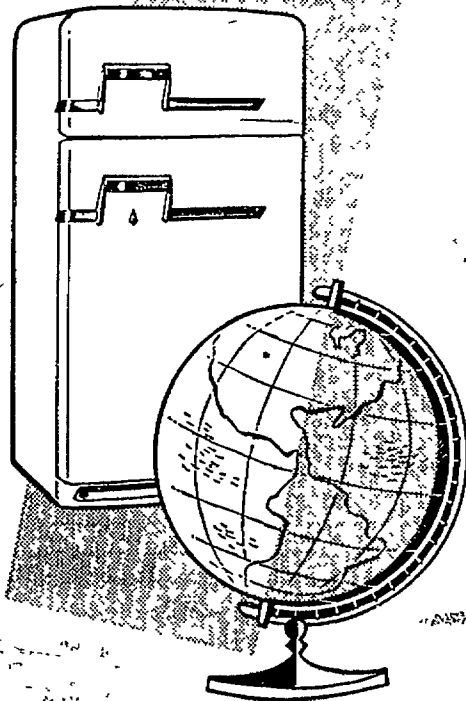
Northville's nemesis was Dearborn Divine Child, which racked up a convincing 7-2 victory. Northville helped out Divine Child's cause by committing eight errors, as Joe Kritch allowed a like number of hits.

The heavy-hitting Northville squad was handcuffed throughout, collecting only five singles.

## 25 Kids Compete In Archery Contest

After a summer of instruction, 25 young archers strung their bows and let fly with arrows in the Northville recreation department's archery contest last Thursday.

The winners: 5-6 years, David Johnston; 7-8 years, Dale Sterling, Mike Ratliff, Kurt Wiley; 9-10 years, Susan Hubbert, Gary Stobbe, Judy Shoner; 11-12 years, Ray Doeksen, Jennifer Ratliff, William Klensorge; 13-14 years, Ron Richardson, Charles Elwell.



## ONLY ONE OF ITS KIND IN THE WORLD!

Yes, the Two-Zone Refrigerator-Freezer is the only one of its kind in the world that makes and serves ice cubes . . . automatically. The amazing new ice-server actually makes and feeds non-stick ice cubes into a basket without being touched! The Servel gives you the silent freezing system with no moving parts to wear or make noise. And, gone forever, is the weekly defrosting sessions, for it's done . . . automatically. With the convenience of this wonderful work-saver right at your side it's a pleasure to plan and prepare meals. Enjoy the convenience and economy of a modern Servel Gas Refrigerator-Freezer.

**GAS DOES IT BETTER**  
...NATURALLY



SEE YOUR GAS REFRIGERATOR DEALER

Published in cooperation with Gas Appliance Dealers by Consumers Power Company

# Sports

THE NORTHVILLE RECORD—Thursday, August 22, 1957—11

## STOP at NOVI INN COCKTAIL LOUNGE

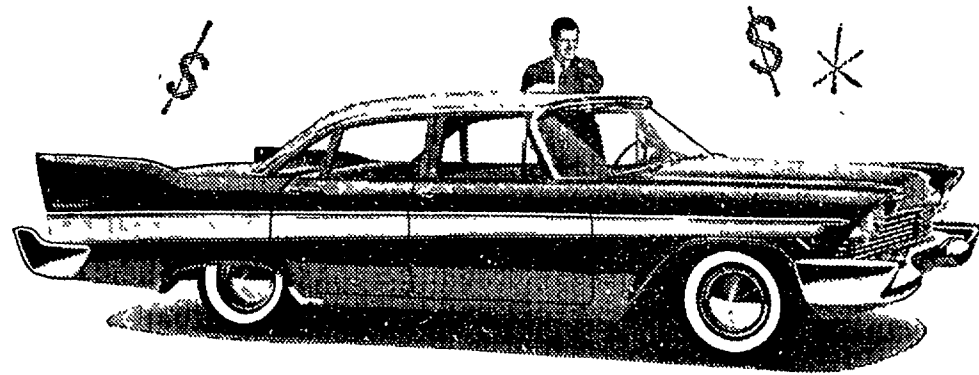
# IT'S SNOWING SAVINGS

at your **PLYMOUTH** dealer's!

It's Plymouth's greatest year—  
and "Operation Snowball" is your greatest  
chance to save on the one car  
that will still be new next snowfall!

Right now is saving weather at your Plymouth dealer's! Plymouth sales are storming ahead at a record rate . . . snowballing to an all-time high. Your dealer is in a position to give you an avalanche of savings on the new Plymouth of your choice. The more Plymouths he sells, the more cash you can save.

You'll really go for the "below-zero" prices your Plymouth dealer is featuring during his spectacular 30-day "Operation Snowball." And you'll like the very liberal allowance he can give you for your present car. So don't miss out on the big savings—pick out your 3-years-ahead Plymouth today.

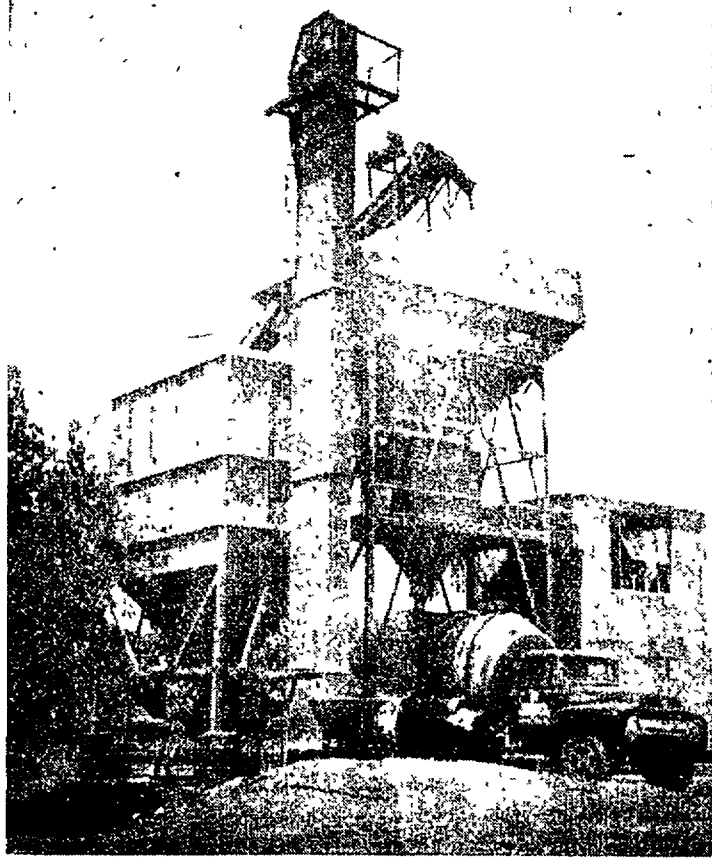


Look ahead...buy ahead...buy a **Plymouth**  
and own more of the future right now!

**G. E. Miller Sales & Service**

127 HUTTON ST. PHONE NORTHVILLE 890 NORTHVILLE, MICH.

# Hornet Concrete Co., Inc.



Serving . . .  
Northville  
Novi  
Salem  
and  
South Lyon

WHEN YOU'RE  
READY  
WE  
MIX

Just Call  
**G.E. 8-8411**  
So Easy! So Fast!  
229 Mill St.  
South Lyon



# IN OUR CHURCHES

**OUR LADY OF VICTORY PARISH**  
Rev. Fr. John Wittstock  
Masses—7, 9, 10:30 and 12 o'clock.  
Religious Instruction—Saturday, 10 a.m. at the church.  
Confessions—Children, Saturday, Adults—Saturdays, 7:30 and 9 p.m. Sundays—8 and 10 a.m. Eve of the first Friday, 7:30 and 8:30 p.m.  
Monthly Holy Communion—First Sunday—Grade School.  
Second Sunday—Holy Name Society, 7:00 Mass.  
Fourth Sunday—Sodality of Our Lady, 11:00 Mass.  
Altar Society meeting—every Wednesday before the third Sunday of the month.  
Mothers' Club—meets at 8 p.m. at the church on the first Tuesday of each month.

**SPRING ST. BAPTIST CHURCH**  
261 Spring St., Plymouth  
W. A. Palmer, Pastor  
Affiliated with Southern Baptist Convention  
Sunday:  
10 a.m., Sunday School.  
11 a.m., Morning Worship.  
6:30 p.m., Training Union.  
7:30 p.m., Evening Worship.  
Wednesday:  
7:30 p.m., Bible Study.

**WILLOWBROOK COMMUNITY CHURCH**  
(Evangelical United Brethren)  
Meadowbrook at Ten Mile Road  
Rev. B. E. Chapman, Minister  
Phone GREENleaf 4-7757  
Parsonage: 24573 Border Hill  
Sunday:  
11 a.m., Worship Service.  
10 a.m., Sunday School.

**NOVI METHODIST CHURCH**  
Church Phone Northville 2919  
Rev. George T. Nevin  
Sunday:  
9:45 a.m., Morning Worship.  
11 a.m., Sunday School. Mrs. Russell Buton, S.S. Supt.  
Wednesday:  
7:30 p.m., Youth Fellowship.  
WCS meets every third Wednesday at 12 sharp for luncheon with study period and regular meeting.

**FIRST BAPTIST CHURCH OF NORTHVILLE**  
217 N. Wing  
Res. and Office Phone 410  
Peter F. Nieuwkoop, Pastor  
Sunday:  
10 a.m., Bible school. Classes for all ages.  
11 a.m., Morning Worship.  
Junior Church for children age 4 to 10. Primary for tiny tots. Nursery room for mothers with babies.  
6:30 p.m., Senior Baptist Youth Fellowship. Mrs. Custer, leader.  
Junior Baptist Youth Fellowship. Mrs. Stiles, leader. Primary Baptist Youth Fellowship.  
7:30 p.m., Evening service.  
Wednesday:  
7:30 p.m., The Hour of Prayer.

**CALVARY TEMPLE**  
Nondenominational  
Corner Six Mile and Napier  
Rev. Vance Hopkins  
8291 McFadden St. Ph. 2859-W  
Order of Services:  
Sunday:  
2 p.m., Preaching service.  
Monday:  
7:45 p.m., Bible teaching.  
Thursday:  
7:45 p.m., Christian Fellowship Night.  
Friday:  
7:45 p.m., Prayer and healing service.



**First Presbyterian Church**  
Main and Church Streets  
Rev. Mr. John O. Taxis—Pastor  
Mr. George Spriggs, Student Assistant  
—Summer Schedule of Services—  
Church Worship 9:30-10:30  
Church School in All Departments 10:30-11:30  
This schedule will be effective through Sunday, September 1



**Casterline Funeral Home**  
RAY J. CASTERLINE DIRECTORS  
STEPHENSON MINUTE MAN RESUSCITATOR AND INHALATOR  
24-Hour Ambulance Service  
OXYGEN EQUIPPED  
FRED A. CASTERLINE  
Phone Northville 263

**SALEM CONGREGATIONAL CHURCH**  
Rev. Henry Tyskerund, Pastor  
Sunday:  
10:30 a.m., Morning service.  
11:45 a.m., Sunday School.  
7:45 p.m., Evening service.  
Thursday:  
7:45, Evening Prayer meeting.

**ST. PAUL'S EVANGELICAL LUTHERAN CHURCH**  
Corner High and Elm Sts.  
Northville, Michigan  
Parsonage Ph. 151, Church 9125  
Rev. B. J. Pankow, M.A., Pastor  
Sunday:  
Morning Worship every Sunday, 10 a.m., Holy Communion, each first Sunday.  
Sunday School and Bible classes, every Sunday, 11:15 a.m.  
Monday:  
Church Council, each first Mon. day, 8 p.m.  
Tuesday:  
Teachers, each second and fourth Tuesday, 7:30 p.m.  
Junior Walthers League, each third Tuesday, 7:30 p.m.  
Thursday:  
Lutheran Ladies Auxiliary, each third Thursday, 8 p.m.  
Friday:  
Senior Walthers League, each second Friday, 8 p.m.  
Announcements for Holy Communion, the Friday before every Communion service, from 2 to 4 and 7 to 9 p.m.

**SALEM FEDERATED CHURCH**  
Richard Burgess, Pastor  
Sunday:  
10 a.m., Morning Worship.  
11 a.m., Sunday School hour.  
6 p.m., Youth choir. Ages 8-13.  
7:30 p.m., Evening service.  
Wednesday:  
7:30 p.m., Prayer and Bible study.  
8:30 p.m., Adult choir rehearsal.

**CHURCH OF THE NATIVITY**  
Episcopal  
Oddfellow Hall—Novi  
Corner Novi Road and Grand River  
10 a.m. Morning Prayer  
**CHRIST TEMPLE**  
8275 McFadden St. - Salem  
Pastor R. L. Sizemore  
Sunday:  
9:45 a.m., Sunday School.  
11:30 a.m., Preaching.  
8 p.m., Night service.  
Wednesday:  
8 p.m., Bible Class.  
7:30 p.m., Saints meeting.

**THE FIRST PRESBYTERIAN CHURCH OF NORTHVILLE**  
Corner E. Main and Church Sts.  
Rev. John O. Taxis, Pastor  
Sunday:  
9:30 a.m., Church Worship  
10:30 a.m., Church School  
Mr. George Spriggs, student assistant, will preach at the church service.

**FIRST BAPTIST CHURCH OF NOVI**  
25901 Novi Road  
Phone 992-R11  
Rev. Arnold Cook, Pastor  
Sunday:  
10:30 a.m., Morning Worship.  
Junior Church for children ages 4 to 10.  
11:30 a.m., Bible school.  
7:30 p.m. Song service. Evening worship service.  
Wednesday:  
7:30, Prayer and Bible study.

**ST. JOHN'S EPISCOPAL CHURCH**  
South Harvey and Maple  
Plymouth, Michigan  
Office Phone 1730 Rectory 2308  
Rev. David T. Davies, Rector  
Sunday Services  
8 a.m., Holy Communion.  
10 a.m., Morning Service and sermon.  
Classes for kindergarten and primary children will be held in the Church Hall during the sermon period. Parents are urged to bring their children with them to church and worship as a family.

**FULL SALVATION UNION CHAPEL**  
51630 West Eight Mile Road  
(3/4 miles west of Northville)  
Interdenominational in effort—Non-sectarian in spirit  
Rev. James Andrews, Gen. Pastor  
Res. and Office Phone N'ville 2817-M  
Sunday:  
2 p.m., Sunday School.  
3 p.m., Worship service.  
On the first Sunday of each month beginning at 2:30 p.m. a general fellowship and educational gathering for all is held with pot-luck supper served in the chapel basement following the service.

**FIRST CHURCH OF CHRIST, SCIENTIST**  
33825 Grand River  
Farmington, Michigan  
Sunday:  
11 a.m., Sunday Service.  
11 a.m., Sunday School.  
Wednesday:  
8 p.m., Evening Service.  
Reading Room - Church Edifice.  
Open Tuesday, Thursday and Saturday from 11 a.m. to 3 p.m.

**FIRST BAPTIST CHURCH**  
North Wixom Road Wixom  
Edmund F. Caes, Jr.  
Market 4-3823  
Sunday:  
10 a.m., Sunday school.  
11 a.m., Morning Worship "Noah"  
7 p.m., Senior Young People.  
8 p.m., Evening Gospel service, "Christian Commitment".  
Wednesday:  
7:45 p.m. Junior Young People.  
8 p.m., Mid-Week Prayer Service.

**CHRISTIAN SCIENCE CHURCHES**  
Main and Dodge Streets  
Plymouth, Michigan  
The wisdom of basing thought on constructive, perfect, spiritual models will be emphasized at Christian Science services Sunday.  
Keynoting the Lesson-Sermon entitled "Mind" is the Golden Text from Romans (11:33): "O the depth of the riches both of the wisdom and knowledge of God! how unsearchable are his judgments, and his ways past finding out!"

**ST. WILLIAMS CATHOLIC CHURCH**  
Walled Lake  
Sunday Masses:  
7:30, 9:00, 11:00 a.m., 12 noon.  
Week Day Masses:  
7:30 and 9:00 a.m.  
Holiday Masses:  
7:00, 9:00, 10:00 a.m.  
Evening Mass at 8 p.m.  
First Friday:  
Mass at 8:00 a.m., 8:00 p.m.  
Confessions:  
4:30 to 6:00 p.m., 7:30 to 9:00 p.m., Saturdays, before and after daily Masses.  
Rosary Altar Society meeting the Thursday after the first Sunday at 8 p.m.  
No Holy Hour during summer.

**ST. BARTHOLOMEW'S EPISCOPAL CHURCH**  
South Lyon, Michigan  
Services at Stone School at Napier and Ten Mile Roads.  
Sunday, August 25:  
11 a.m., Morning Prayer and sermon by the Rev. Joseph Spooner.  
Church School.  
All are welcome to attend these services.

**FIRST METHODIST CHURCH OF NORTHVILLE**  
109 W. Dunlap Northville  
Office 699-J Residence 699-M  
Paul Cargo, Minister  
Sunday, August 25:  
10 a.m., Unified Worship Service.  
Sermon by Mr. Bruce Felker.  
Lounge available for mothers with babies.  
Church School. Classes from nursery through junior department.  
Tuesday, August 27:  
7 p.m., Intermediate and Senior-Hi MYF progressive dinner. Watch Sunday bulletin for further details.  
Thursday, August 29:  
7:30 p.m., Fellowship of the Concerned in the Chapel.

## from the PASTOR'S STUDY

By The Rev. Byron E. Chapman  
Willowbrook Community Church



### THE EDGE OF THE WORLD

The truly unfortunate person is one who has never had a task that was too big for him. Of course it is embarrassing to fail at a task, but it is often more honorable to fail at a big task than to succeed in a mediocre one.

Many of us live in a pretty small world. We have carved it out of the circumstances of life. By avoiding the difficult and the strange we retrace the easy and familiar patterns in everyday existence. In such a world we feel ourselves completely adequate for any circumstance or trial. In this world the ego inflates and smug complacency takes the place of humility. The soul withers and selfishness often takes the place of gratitude. When life offers no insurmountable challenge, human strength alone seems quite enough to meet the problems. Many folks have reduced their world to such a dimension they can get, do, go, come and manipulate it completely to their own satisfaction without any outside help. An adult batting in the sand-lot league with the children can easily hit a home-run.

Perhaps the most exciting and satisfying experience in life comes to us when we have thrown ourselves into a gigantic task which takes every ounce of vitality, muscle, brawn spirit and brains which we possess. It is truly thrilling to walk beyond the boundary line of our cozy little world and to throw our-

selves into a task so big we must seek help beyond our own strength. When we live on the boundary of our little world we can sense the power and the glory of a kingdom beyond ourselves. Our friends cannot be of any real help to us until we have reached the boundary of our own strength and yield our cause to their love and assistance. Indeed, our extreme failure is God's choicest opportunity. It is out of weakness that we are made strong; out of our failure that we come to truly succeed. How wonderful indeed it is to stretch our hands beyond our little world and there to clasp by faith, the hand of God. We can never know how much God can do for us until we have launched out into the deep in tasks that quickly swallow up our human strength and throw us violently upon the resources of Divine Providence.

*With buoyant step and confidence  
The path of life I trod  
My strength was match for any task  
With ease I tilled my sod.  
But then one day I found a task  
That left me in despair.  
In that dark hour I cried for help  
And found that God was there!  
And now I know that blessed strength  
That sees me through life's test.  
I've learned to spend my own life's store  
And trust to God the rest.*

## Events Out of the Past

### ONE YEAR AGO...

Novi township board members instructed township attorney Arch Leonard to test the validity of the election that gave an 82 acre tract of Novi township to Northville.

A snag in specifications and confusion in bids resulted in the refusal of all bids in the proposed Wing-First-Fairbrook storm sewer project.

Mr. and Mrs. Fred Fry of Seven Mile road celebrated their 57th anniversary with a trip to the thumb area of Michigan.

Birchard C. Grimshaw of Haggerty road was named to the 1956 dean's list at Miami university in Oxford, Ohio.

**FIVE YEARS AGO...**  
Final plans to launch the second annual Northville Parade of Progress called for the affair to be held from August 27 through September 28.

Mayor Conrad Langfield and Justice E. M. Bogart represented Northville at a dinner at the Northville state hospital.

Cy Owens Ford team became the undisputed champion of the Northville softball league for the 1952 season.

Ursula Hamacher and Jurgen Bonnet, German exchange students, arrived in Northville to begin a year of living and studying away from home.

**TEN YEARS AGO...**  
Over the objections of Lieutenant Governor Eugene C. Keyes, the State of Michigan proceeded with preliminary construction on the proposed Northville state hospital.

Northvillites gathered at the First Presbyterian church to pay their last respects to Donald Purdy

Yerkes, one of Northville's pioneer businessmen.

**FIFTEEN YEARS AGO...**  
Hundreds of children enjoyed the free acts show on opening the 26th annual fair.

A hearing on the proposed zoning ordinance was planned by the village commission.

Mildred Ely was the first woman from the village to enlist in the military service. She became a member of the WAAC.

The change to natural gas for this vicinity was progressing satisfactorily.

**TWENTY YEARS AGO...**  
Correspondence which was begun in 1936 by postmaster Fred Van Atta for the purpose of placing Northville on the Federal list of appropriations for a new post office had reached the "maybe" stage and the local request was really being looked upon as a possibility.

Upon acceptance by members of the school board of E. L. Johnson's resignation, Edward Mollema, with the Detroit Institute of Technology, came to Northville to teach social science, speech and debate in the high school.

Mrs. Charles E. Murphy was elected president of the Department of Michigan American Legion Auxiliary at the sessions held in Detroit.

**TWENTY-FIVE YEARS AGO...**  
According to information from superintendent of schools T. J. Knapp, Northville schools weren't to open doors for the fall session until October 3.

The wheels of the Ambler Furnace company were again going around after being silent for three or four months. A force of a dozen

men were employed with the hope of adding more as the demand for shipments increased.

**FORTY YEARS AGO...**  
The Edison company's local office force moved into the company's handsome new building on North Center street.

### DISTINCTIVE

#### WEDDING

#### PHOTOGRAPHY

## HAROLD HARTLEY JR.

Phone 215-W

Northville  
Michigan



## MORE HOT WATER WITH EDISON'S NEW ELECTRIC WATER HEATING SERVICE

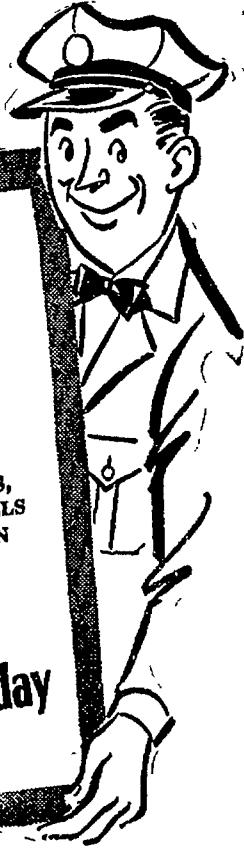
Only electric water heaters give you all these important advantages:



- ☑ Plenty of hot water—24 hours a day
- ☑ Safe—flameless
- ☑ Install anywhere—no flame, no flue
- ☑ Long-lasting—meets Edison's rigid standards
- ☑ Clean—no smoke, no soot
- ☑ Outer shell—cool to the touch all over
- ☑ Easy financing—up to 3 years to pay
- ☑ Efficient—no heat wasted up a flue

All this adds up to the best water heating service ever provided in Southeastern Michigan

Ask your plumber or appliance dealer • **DETROIT EDISON**



**AUGUST VACATION SPECIAL**

- FRONT END ALIGNMENT and WHEEL BALANCE \$10.00
- ADJUST BRAKES, PACK FRONT WHEELS and LUBRICATION \$3.95

Let Our Expert Mechanics Put Your Car In A-1 Running Condition

**Drive In Today**

CLIFF BOYD  
Service Manager

• GENUINE FORD PARTS

YOUR FRIENDLY FORD DEALER

**MARR TAYLOR**

117 E. MAIN NORTHVILLE  
PHONE 1320



# DOWN

down go

## \$3,500 CONTEST VOTES

### 10 P.M. SATURDAY AUGUST 24

### THE END OF THE BIGGEST VOTE PERIOD

VOTES FOR \$30.00 CLUBS  
DROP 25,000 SATURDAY

GET THE PRIZE WINNING VOTES THIS WEEK  
Each Subscription Yields Fewer Votes After Aug. 24

#### OPPORTUNITY CLUB COUPON

GOOD FOR 75,000 EXTRA VOTES

This coupon when accompanied by \$30.00 worth of subscriptions, will credit a contestant with 75,000 extra votes if turned in by 10 p.m., Saturday, August 24, 1957.

No. \_\_\_\_\_ Subscriptions @ \$3.00 .....  
No. \_\_\_\_\_ Subscriptions @ \$5.00 .....  
No. \_\_\_\_\_ Subscriptions @ \$10.00 .....

Contestant's Name \_\_\_\_\_

NOTE: No limit on the number of these coupons a contestant can use. This is the same as the FIRST WEEK COUPON

#### SUBSCRIPTIONS EARN MORE VOTES THIS WEEK

Subscriptions turned in this week and next by contestants entered and those who enter will earn more votes than at any other time during the contest.

Ten \$3.00 subscriptions, a \$30 club, give a  
total vote of ..... 400,000  
Six \$5.00 subscriptions give a  
total vote of ..... 540,000  
Nine subscriptions for \$10.00, three \$30.00 clubs, give a  
total vote of ..... 1,750,000

Make a list of your one, two and three year prospects and get them while the Opportunity Club is in effect — before August 24, 10 p.m.

PRICES AND SCHEDULE OF VOTES FOR NEW AND RENEWAL SUBSCRIPTIONS

#### THE NOVI NEWS

#### NORTHVILLE RECORD

The following number of votes will be issued for subscriptions for either newspaper during the \$3,500 Subscription Contest:

NOVI NEWS PRICES	NORTHVILLE RECORD PRICES	1st PERIOD Thru Aug. 24 VOTES	2nd PERIOD Thru Sept. 7 VOTES	3rd PERIOD Thru Sept. 14 VOTES	FINAL PERIOD Thru Sept. 21 VOTES
In Michigan	In Michigan	100,000	50,000	50,000	75,000
4 Years ..... \$10.00	4 Years ..... \$10.00	40,000	35,000	30,000	25,000
2 Years ..... 5.00	2 Years ..... 5.00	10,000	8,000	7,000	6,000
1 Year ..... 3.00	1 Year ..... 3.00				

ADD \$1.00 per year to above for subscriptions out of State of Michigan

200,000 VOTES ADDED TO THE ABOVE FOR EVERY \$30 WORTH (Club) OF SUBSCRIPTIONS TURNED IN

25,000 EXTRA VOTES GIVEN FOR CASH SUBSCRIPTION REPORTS ON WEDNESDAY and SATURDAY.

NOTE: Contestants can turn in subscriptions at the Northville Record office until 9 p.m. Wednesdays and Saturdays. No extra votes will be issued on subscriptions out of the State of Michigan.

#### ★ DISTRICT ONE PRIZE...

NORTHVILLE RECORD AREA

**\$500 U. S.  
SAVINGS BOND**

TO BE DELIVERED TO THE WINNER BY  
NORTHVILLE BRANCH

**Manufacturers National Bank  
of Detroit**

#### ★ DISTRICT TWO PRIZE...

NOVI-NEWS AREA

**\$500 U. S.  
SAVINGS BOND**

TO BE DELIVERED TO THE WINNER BY  
NOVI BRANCH

**National Bank  
of Detroit**

#### Get 4 Year \$10.00 Subscriptions Now To Get the Winning Votes Here's What 10 \$30 Clubs Earn In Votes Now

HERE IT IS — all figured out. Any combination of subscriptions totaling \$30 worth yields votes on the same basis. These are NOT EXTRA VOTES. This includes votes that individual subscriptions earn, 200,000 club votes, 75,000 on the club coupons and 25,000 for making subscription reports. This table is published so that contestants can set a goal for so many subscriptions and try to reach it this week — while the first period vote offer is in effect.

TEN \$30 CLUBS (\$300) in \$10.00 SUBSCRIPTION PAYMENTS YIELD	5,775,000 VOTES
This means getting only 30 subscriptions for 4 years.	
The same number of subscriptions after Saturday yield only	5,225,000 VOTES
TEN \$30 CLUBS (\$300) in \$5.00 SUBSCRIPTION PAYMENTS YIELD	5,175,000 VOTES
This means getting 60 people to subscribe, renew or extend their time for 2 years.	
The same number of subscriptions after Saturday yield only	4,625,000 VOTES
TEN \$30 CLUBS (\$300) in \$3.00 SUBSCRIPTION PAYMENTS YIELD	3,775,000 VOTES
This means getting 100 people to subscribe for one year.	
The same number of subscriptions after Saturday yield only	3,325,000 VOTES

CONTESTANTS: Set your Goal For Ten Clubs This Week and Work Until You Get Them. Ten Clubs of Subscriptions This Week Will Give Many More Votes Than They Will the Final Week of the Contest.

#### Why Take Less Than First Period Votes

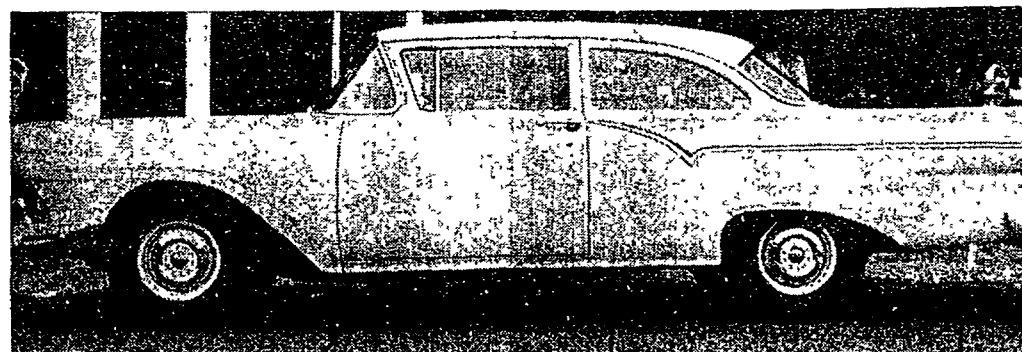
#### SECOND PRIZE

**\$500**

Any Entrant Can Win This Prize

#### FIRST GRAND CAPITAL PRIZE NEW 1957 FORD

Custom Tudor Sedan with Conventional Drive - 6 Cylinder



WINNER MUST BUY OWN LICENSE PLATES & PAY STATE SALES TAX

To Be Supplied By and Be On Display at

**Marr Taylor Ford Sales**

117 West Main St.

Northville

Phone 1320

#### HOW TO ENTER

The first step in order to become a contestant and compete for a prize, is to clip the nominating coupon appearing in this announcement, fill in your name and address and mail it to the Contest Manager of The Northville Record or The Novi News, Northville, Mich. This coupon entitles you, or the person whom you might nominate, to 5,000 FREE votes. These votes are given as a starter, and speed you on your way to win. Only one such nomination coupon will be accepted for each contestant entered.

#### FIRST WEEK

#### Cash and Vote Coupon

GOOD FOR

**\$3.00 Cash and 100,000 Extra Votes**

This Coupon, when accompanied by \$30.00 worth of subscriptions, is WORTH \$3.00 CASH and 100,000 EXTRA VOTES if returned in the FIRST WEEK after entering the contest.

No. \_\_\_\_\_ Subscriptions @ \$ 3.00 ..... \$  
No. \_\_\_\_\_ Subscriptions @ \$ 5.00 ..... \$  
No. \_\_\_\_\_ Subscriptions @ \$10.00 ..... \$

TOTAL ..... \$30.00  
Deduct \$3.00 cash ..... 3.00  
TURN IN at contest office ..... 27.00

Contestant's Name \_\_\_\_\_

Address \_\_\_\_\_

NOTE: No limit to the number of these coupons a contestant can use the first week after entering

#### FOURTH PRIZE NEW \$169.95 PHILCO PORTABLE TELEVISION

... WITH 17-INCH SCREEN  
SUPPLIED AND ON DISPLAY AT

**Northville Electric Shop**

153 EAST MAIN PHONE 184 NORTHVILLE, MICH.

#### It's Not Too Late To Enter and Win!

IF YOU have been considering entering the contest, DO IT NOW. You have the same opportunity to extra votes and earn extra cash as those already entered. YOU CAN ENTER TODAY and be a leader in the race WITHIN ONE WEEK if you will go after and get subscriptions: If you are not easily discouraged — If you are determined and will go to work and will make it a point to get just a few subscriptions each day, you can enter NOW AND WIN. You can't lose. A commission is guaranteed. Phone today and ask for more details.

Every Entrant  
Has The Same  
Opportunity  
The First Week  
After Entering  
The Contest

#### SUBSCRIPTION ORDER BLANK

CAMPAIGN MANAGER  
NORTHVILLE RECORD — NOVI NEWS  
NORTHVILLE, MICH.

Dear Sir: I am enclosing \$\_\_\_\_\_ for my subscription for ☐ Record ☐ News  
☐ \$10.00 for 4 years and 100,000 VOTES.  
☐ \$5.00 for 2 years and 40,000 VOTES.  
☐ \$3.00 for 1 year and 10,000 VOTES

VOTES TO BE CREDITED TO \_\_\_\_\_  
(Write name of contestant you want to have votes)

MY NAME IS \_\_\_\_\_

MY ADDRESS IS \_\_\_\_\_

( ) I am a subscriber. ( ) I am NOT a subscriber

If you are a subscriber, your subscription will be extended from the time it expires

#### ENTRY BLANK

GOOD FOR 5000 ENTRY VOTE

Northville Record - Novi News  
William Lancaster, Contest Manager  
Northville, Michigan

Date \_\_\_\_\_ 1957

Please enter the person whose name appears below in the \$3,500 CONTEST, and send full details:

Miss, Mr., Mrs. \_\_\_\_\_

Street No. or Route \_\_\_\_\_

Town \_\_\_\_\_ Phone No. \_\_\_\_\_

Age \_\_\_\_\_ Do you have access to a Car? \_\_\_\_\_

Occupation \_\_\_\_\_

Resident of \_\_\_\_\_ Village - Township

NOTE: You can enter your name or that of a friend  
Only 5,000 entry votes will be credited



**VILLAGE OF WIXOM**  
County of Oakland, State of Michigan  
**BUILDING CODE**  
Ordinance No. 30

**GENERAL PROVISIONS**

An ordinance regulating the erection, construction, alteration, repair, demolition, height, location and area of buildings in the Village of Wixom, Oakland County; providing for the issuance of permits and collection of fees therefor; providing for the establishment of fire limits; providing penalties for the violation hereof.

The VILLAGE COUNCIL of the VILLAGE OF WIXOM, Oakland County, Michigan, Ordains:

**Section 100. TITLE.**

This Ordinance shall be known as the Building Code for the Village of Wixom, Oakland County, and will be referred to in this Ordinance as This Code.

**Section 101. APPLICATION AND SCOPE**

101.1 The purpose of this code is set forth in the PREFACE hereto attached and same is made a part hereof. Further it is the purpose of this code to provide minimum standards of associations, government agencies and/or other national organizations listed in the appendix of this code as standards for the Village of Wixom.

101.2 All buildings and structures designed for use as, or used as one or two family dwellings, not more than two stories or more than 30 feet in height and private garages and other buildings accessory to dwellings not more than 1½ stories nor more than 15 feet in height hereafter erected, altered, repaired, moved or demolished shall comply in full with the requirements of this code.

101.3 All buildings and structures not expressly within the scope of Section 101.2 as set forth above and/or which involve the use of structural steel and/or re-enforced concrete framing, heavy timber construction, roof trusses with spans of more than 25 feet (but not including trussed roof construction) shall conform with the applicable requirements of THE BASIC BUILDING CODE promulgated by the Building Officials Conference of America, regarding design: Except that the incidental use of steel beams, girders, column and hangers and re-enforced concrete slabs and walls shall be permitted under this code.

101.4 The Basic Code referred to above is hereby made a part of this code with respect to matters specified in Section 101.3. The Basic Code so adopted by reference is that code which was copyrighted and published by such Conference in 1930 and including subsequent revisions and amendments.

**Article II****DEFINITIONS****Section 200. DEFINITIONS**

For the purpose of this Code, the terms listed below shall have the meanings given in this chapter.

**Approved.**  
Approval by the building inspector under the provision of this Code or by other authority designated by law to give approval of the matter in question.

**Basement.**  
That portion of a building partly below grade but so located that the vertical distance from the grade to the floor is greater than the vertical distance from the grade to the ceiling; provided, however, that if the vertical distance from the grade to the ceiling is five (5) feet or more, such basement shall be considered as a story or when 50 percent or more of the space in a basement is used for a habitable room it shall be counted as a story.

**Building.**  
A structure having a roof supported by columns or walls for a shelter, support or enclosure of persons, animals, or chattels is a building, when any portion thereof is completely separated from every other part thereof by division walls from the ground up, and without openings, each portion of such building shall be deemed a separate building.

**Building Inspector.**  
The person charged with administration and enforcement of this code.  
**Ceiling Height.**  
The vertical distance between the floor and ceiling.  
Where a finished ceiling is not provided the underside of joists shall determine the upper point of measurement.

**Concrete.**  
1. Plain.  
Concrete cast in place without metal reinforcement or reinforced only for shrinkage or temperature changes.

**2. Reinforced.**  
Concrete in which steel rods or mesh are embedded to increase strength.

**Dwelling.**  
A dwelling is any house or building or portion thereof, which is occupied wholly as the home, residence or sleeping place of one or more human beings, either permanently or transiently.

**Erected.**  
Includes any constructions, reconstructions, enlargement, movement or physical operation on either the dwelling or on the land required for the dwelling. Excavation, fill, drainage and the like shall be considered a part of erection.

**Floor area of a room.**  
The number of square feet of floor space within the walls of a room. Grade, finished.  
The line formed at the junction of a building and the area immediately surrounding the building to which the ground is to be or has been cut or filled.

**Habitable room.**  
A room occupied by or designed for occupancy by one or more persons for living, sleeping, eating or cooking, including kitchens serving as a dwelling unit but not including bathrooms, water-closet compartments, laundrys, serving and storage pantries, corridors, cellars, attics, recreation rooms, and spaces that are not used frequently or during extended periods.

**Incombustible.**  
Material that will not of and by itself ignite when its temperature and that of the surrounding air is 1,200 degrees Fahrenheit (649 degrees Centigrade).

**Lintel.**  
A horizontal structural member supporting masonry above an opening in a wall or partition.

**Load, dead.**  
The weight of walls, floors, roofs, partitions and other permanent portions of the structure.

**Lot.**  
A portion or parcel of land considered as a unit devoted to a certain use or occupied by a building or a group of buildings that are united by a common interest or use, and the customary accessories and open spaces belonging to the same.

**Lot Line.**  
A line dividing one lot from another or from a street or other public place. In case any part of a lot lies adjacent to a public right-of-way or easement, the lot line of that part shall be the right-of-way line or easement boundary crossing such part.

**Masonry.**  
Stone, brick, structural clay tile, concrete masonry units, gypsum tile or block, structural glass block or other similar building units or materials or a combination of same bonded together with mortar. Masonry also includes plain concrete.

**Partition, bearing.**  
A partition which supports any vertical load in addition to its own weight.

**Partition, nonbearing.**  
A partition which supports no load other than its own weight.

**Pier.**  
An isolated column of masonry. A bearing wall not bonded at the sides into associated masonry and whose length does not exceed four times its thickness.

**Wall, veneered.**  
A wall having a facing which is not attached and bonded to the backing so as to form an integral part of the wall for purposes of load bearing and stability.

**Yard.**  
A space open to the sky and unoccupied or unobstructed except by encroachment or structures specifically permitted. All yard measurements shall be the minimum distances between the front, rear or side yard line, as the case may be, and the nearest point of the building including enclosed or covered porches. Every part of every yard shall be accessible from every other part of the same yard.

**1. Yard, front.**  
A yard across the full width of the lot extending from the front line of the building to the front line of the lot.

**2. Yard, side.**  
A yard extending from the front yard or front lot line to the rear yard or rear lot line, and from the side line of the building to the side lot line nearest that side of the building or any accessory building attached thereto.

**3. Yard, rear.**  
A yard across the full width of the lot extending from the rear line of the building to the rear line of the lot.

**Article III****SAFETY PROVISIONS****Part One — Construction**

**Sec. 300. QUALITY OF MATERIALS AND WORKMANSHIP.**  
All building materials and workmanship shall be of good quality conforming to generally accepted standards. Except as may be otherwise provided in this Code, the standards of the National Bureau of Standards are hereby declared to be acceptable good practice.

**Sec. 301. MASONRY MIXES.**

**301.1 Mortar.**  
1. PROPORTIONS — Mortars of the following proportions measured by volume with the sand in a damp loose condition, shall be acceptable for the specific use mentioned in this section:

**Type A —** One part of portland cement to not more than 3 parts of sand with an addition of hydrated lime or lime putty of not more than 25 per cent of the cement.

**Type B —** One part of portland cement, one part hydrated lime or lime putty, and not more than 6 parts of sand. One part of prepared masonry cement conforming to Type 11 of Federal Specification SS-C-181B to not more than 3 parts of sand.

**2. USE —** Type A mortar shall be used for all below-grade masonry construction. Type A or B mortar shall be used for all above grade construction.

**301.2 — Concrete.**

**1. WORKABLE CONCRETE.** Water used in mixing concrete shall be clean and free from deleterious amounts of acids, alkalis or organic materials. The maximum size of concrete aggregates shall not be larger than 1/5th of the narrowest dimension between forms of the member for which the concrete is to be used, not larger than 2½ inches. Workable concrete shall be placed in accordance with the following table for the particular use specified:

Type of Concrete and Use	Maximum Gallons of Water per Sack of Cement with Sand of Moisture Content Indicated			Maximum Cubic Feet of Total Aggregate* per Sack of Cement
	Dry	Average	Wet	
Type A — All concrete exposed to the weather or to water pressure or reinforced.	6	5¼	4¾	6½
Type B — All other concrete except Type C.	7½	6½	5½	7½

\*Proportion of sand (passing ¼ inch screen) to coarse aggregate (retained on ¼ inch screen) shall be not less than 35 per cent nor more than 50 per cent by volume.

**2. PROTECTION.** When the temperature of the surrounding air is less than 40 degrees Fahrenheit, the materials shall be heated and the concrete protected for as much time as is necessary to insure proper curing. All concrete shall be kept wet for at least 5 days. All masonry shall be protected against freezing for at least 48 hours after placing. Unless adequate precautions against freezing are taken, no masonry shall be laid when the temperature is below 32 degrees Fahrenheit on a rising temperature or below 40 degrees on a falling temperature at the point where the work is in progress. In hot, dry weather, precautions shall be taken to prevent too rapid drying by sprinkling or shielding with damp earth, burlap or similar protective covering. No fresh masonry construction shall be made upon frozen concrete.

**3. OTHER REQUIREMENTS.** For design principles and practices not specifically mentioned in this section, the standards set forth in the "Building Regulations for Re-inforced Concrete" of the American Concrete Institute, ACI-318, shall be acceptable.

**Sec. 302. FOOTINGS AND FOUNDATIONS.****302.1. General.**

All footings and piers shall be carried below local frost level, shall be undisturbed soil, and shall be designed to properly and safely distribute the superimposed load. Where soil conditions are unstable, the building inspector may require additional provisions to insure stability. Drain tile shall be used around basement foundations where conditions require it.

**302.2 Size of footings and piers.**

Footings for all load bearing walls shall be of concrete at least eight (8) inches wider than the walls directly supported thereon and shall not be less than eight (8) inches thick. Footings of piers shall have a minimum area of 4 square feet and 12 inches depth.

**302.3 Chimney footings.**

Chimney footings shall have a minimum projection of 6 inches beyond outside dimensions of chimney foundation and a minimum depth of 12 inches.

**302.4 Foundation walls.**

Foundation walls shall be of continuous masonry construction and shall center on footings and shall be of the following thickness: If built of brick, concrete, hollow blocks or solid blocks, the thickness shall be not less than 12 inches; provided that when such walls of buildings do not extend more than 6 feet below the adjacent ground level, the minimum thickness of masonry or concrete walls shall be 8 inches. Foundation walls shall never be thinner than the wall being supported.

**302.5 Hollow masonry unit walls.**

Eight inch walls of hollow masonry units shall have 12 inch bonded pilasters with 4 inch projection at girder bearings and at least every (24) twenty-four feet along run of wall between cross walls or corners. All walls below grade to be plastered and waterproofed.

**302.6 Openings for inspection and repair.**  
An opening of not less than 16 inches high and 2 feet wide shall be installed to provide access for inspection and repairs of each unexcavated space under wood or metal floor construction, or under concrete slabs where piping, duct work, etc., requiring periodic inspection or repair are located.

**302.7 Wall vents.**

Wall vents proportioned on a basis of 1 square foot for each 25 lineal feet of exterior wall shall be installed for ventilating all dead air spaces under wood or metal floor construction and each such space shall have vents in at least two walls, except that only 1 vent into a basement or cellar will be acceptable. Non-combustible screening of not over ½ inch mesh shall be installed in each outside vent opening.

**302.8 Concrete slabs on ground.**

Buildings constructed on concrete slabs will be acceptable when the construction of the slab meets the approval of the building inspector.

**Sec. 303. MINIMUM DESIGN LOADS**

All floors shall be designed for the dead load plus a live load of not less than 40 pounds per square foot of floor area. All roofs shall be designed for the dead load plus a live load of not less than 30 pounds per square foot of horizontal projection.

**Sec. 304.—WOOD CONSTRUCTION**

**304.1 General requirements, Working stresses and design.**  
Compliance with the standards set forth in the publications "Minimum Construction Requirements for New Dwellings Located in the State of Michigan," revised May 15, 1940, Federal Housing Administration, FHA form No. 2209, or "National Design Specification for Stress-Grade Lumber and its Fastenings," first edition 1944, National Lumber Manufacturers Association, shall be acceptable.

**SIZES OF LUMBER MEMBERS.** Minimum sizes of lumber members required by this Code refer to nominal sizes. American Lumber Standards for dressed sizes shall be accepted as the minimum sizes conforming to nominal size. Computations to determine the required sizes of members shall be based on the net dimensions (actual size) and not the nominal sizes.

**2. JOIST SPANS.** First floor joist, if of wood shall not be less than two (2) inches x eight (8) inches up to and including fourteen (14) feet spans — two (2) inches x ten (10) inches up to and including eighteen (18) feet spans and two (2) inches x twelve (12) inches up to and including twenty-four (24) feet spans. For second floor joist the foregoing spans may be increased by two (2) feet. In no case shall any floor joist be less than two (2) inches x eight (8) inches nor spaced further apart than sixteen (16) inches center to center, except that attic joist may be two (2) inches x six (6) inches. Sub floors shall be required on top of first and second floor joist and shall not be less than one (1) inch commercial flooring or shiplap.

**3. SPLICING.** Splicing of wood joists between bearing points will not be permitted.

**4. GIRDERS.** Girders may be structural steel, solid wood, built-up wood or reinforced concrete. All built-up wood girders shall have joints broken at no less than 8 foot intervals. No floor girder or beam used to carry first floor construction shall have a greater unsupported span than eight (8) feet and if of wood shall not be less than six (6) inches x eight (8) inches.

**5. WOOD COLUMNS.** Wood when used as columns in basements shall bear on a cement base 8 inches by 8 inches which shall extend 3 inches above the finish floors. The base shall bear directly on the post footing.

**304.2 Floor, ceiling and roof framing.**  
**1. JOIST SUPPORTS.** Where floor joists frame into the side of wood girders the joists shall be supported on metal joist hangers or on a wood bearing strip spiked to the side of the girders. Ends of the floor joists framing into masonry walls shall be supported on metal joist hangers or shall have not less than 4 inch bearing. An air space of ½ inch shall be provided at ends and sides of wood joists framing into masonry.

**OVER UNEXCAVATED AREAS.** Floor joists shall have a clearance of not less than 18 inches between the bottom of the joists and the surface of the ground underneath in unexcavated areas.

**3. MULTIPLE JOISTS.** Floor joists shall be double under all non-bearing partitions which run parallel to the floor joists. Joists under bearing partitions shall be multiplied in sufficient number to adequately support combined loads. Double joists shall be separated and block at 4 foot intervals where piping or duct work occurs.

**4. HEADERS AND TRIMMERS.** Headers and trimmers shall be doubled except that headers 4 feet or less in length may be of single thickness provided the headers are supported in metal joist hangers, or on columns or posts, or on not less than 2 inch by 3 inch ledger boards and header is secured by spikes driven through one thickness of the trimmers into the ends of the headers. Headers receiving more than 4 tail beams shall have ends supported in metal joist hangers.

**5. LAPPED JOISTS.** Ends of lapped joists shall rest on girders or on bearing partitions and shall be securely nailed to plate and to each other.

**6. BRIDGING.** Floors and flat roof joists shall be crossbridged at intervals not to exceed 6 feet and double nailed each end.

**7. DEFECTS.** Where the structural strength of framing members is definitely impaired by inherent defects or by cutting or drilling, such members shall be reinforced or replaced as required by the building inspector.

**8. ACCESS.** An opening not less than 24 inches by 30 inches for access into each attic space shall be provided.

**9. VENTILATION.** All attics and spaces between flat roofs and ceilings shall be ventilated by screened louvers or other means approved by the building inspector.

**10. COLLAR BEAMS.** When ceiling joists do not serve as ties for the rafters, collar beams of 1 by 6's or 2 by 4's shall be installed on at

least each 3rd pair of roof rafters and shall be securely nailed to the rafters. Maximum spacing of collar beams, 5 feet on center.

**11. ROOF RAFTERS.** Roof rafters shall not be less than two (2) inches x six (6) inches for spans (figured on the horizontal projection of 12' 0" and over). Hip rafters shall not be less than two (2) inches x six (6) inches and if longer than twenty (20) feet they shall not be less than two (2) inches x eight (8) inches. Rafters shall in no case be spaced further apart than twenty (20) inches center to center.

**12. VALLEY RAFTERS.** The depth of ridge boards and valley rafters shall be not less than the abutting rafters. Valley rafters shall be not less than 2 inches thick. All rafters shall be securely spiked to the supporting members.

**13. DOUBLE RAFTERS.** All openings in roof construction for dormer windows which are not supported on partitions shall be framed with double rafters and headers.

**304.3 Exterior walls.**

**1. FRAMING.** All exterior wall covering materials shall be moisture-resistant, of sufficient stiffness and properly anchored to remain in place during high winds and be reasonably permanent, provided however, that no type of material shall be used other than those types approved by the Village Council. A list of such approved materials may be obtained from the building inspector. Exterior wood or metal stud walls shall provide strength and rigidity equivalent to the following:

1 inch by 4 inch wood studs spaced not more than 16 inches on center for walls supporting floor loads.

2 inch by 4 inch wood studs spaced not more than 24 inches on center for walls that do not support floor loads.

All studs shall be securely fastened to plates top and bottom. Walls shall have corner posts either built-up or solid of not less than three 2 by 4's. Top plates shall be not less than doubled 2 by 4's which shall lap at all corners and at all intersecting partitions. All such laps shall be securely spiked. All window and door openings shall have studs doubled on jambs. The inner stud shall be cut to receive the header over the opening and shall extend in one piece from header to baring.

Headers over all openings shall be doubled and shall be set on edge. In lieu of headers, trussed construction may be used. Spans for headers shall not exceed the following for the size given:

Spans up to 4 feet ..... two 2 by 4's  
Spans 4 feet to 5½ feet ..... two 2 by 6's  
Spans 5½ feet to 7 feet ..... two 2 by 8's  
Spans over 7 feet to 10 feet ..... two 2 by 10's

**1. (2) SHEATHING.** Sheet metal siding shall not be used as an external wall covering material on any type building.

**2. SILLS.** The sills of frame walls supported directly on masonry shall be not less than 2 inches thick and not less in width than that of the width of the studs.

**3. SHEATHING.** Sheathing, may be of wood, structural insulation board, gypsum board, plywood, or other materials approved by the building inspector.

**304.4 Interior partitions.**

**1. BEARING PARTITIONS.** Studs of all bearing partitions and studs of all non-bearing partitions exceeding 6 feet of unsupported length which contain openings shall be made up of 2 by 4's spaced not more than 16 inches on center and set the 4 inch way.

**2. NON-BEARING PARTITIONS.** Studs of all non-bearing partitions which are devoid of openings may be made up of 2 by 4's spaced 16 inches on center and set the 2 inch way.

**3. OPENINGS.** All openings in interior bearing partitions shall have jambs and heads double-framed same as required for exterior openings. TOP PLATE. The top plates of all bearing partitions shall be doubled. All partition plates shall lap at all intersecting partitions and at outside walls and shall be securely spiked.

**5. SOLE PLATE.** When partitions frame on top of the joists or sub-floor, the studs shall bear on a sole plate at least 2 inches thick.

**Section 304.5 PREFABRICATED BUILDING**

That nothing herein shall be construed to eliminate construction or erection of a prefabricated type building, if such type building meets the requirements and construction standards as set forth in this Ordinance.

**Sec. 305. MASONRY CONSTRUCTION.****305.1 Walls.**

**1. SOLID-BRICK WALLS.** Solid-brick bearing walls shall be not less than 8 inches thick. There shall be a header course in all brick walls at least every seventh course on both sides of the wall or there shall be at least one full-length header in every 1½ square feet of wall surface.

**2. HOLLOW MASONRY UNIT WALLS.** The minimum thickness of bearing walls of structural clay tile or concrete masonry units shall be not less than 8 inches. Hollow masonry units shall have full mortar coverage on vertical and horizontal edges of the face shells. Where 2 or more hollow units are used to make up the thickness of a wall, the inner and outer course shall be bonded at vertical intervals not exceeding 34 inches by lapping at least 4 inches or by lapping with units at least 50 per cent greater in width than the units below.

**3. BRICK VENEERED WALLS.** Thickness of brick veneer shall be not less than ¾ inches properly anchored, with rust-resting wall ties and with at least one tie in every three square feet. The veneer shall rest on the foundation. Two inch brick veneer may be used for one-story dwellings upon approval by the building inspector.

**4. EXISTING WALLS.**

No existing wall shall be used for renewal or extension of a building or be increased in height without special written permission from the building inspector.

**305.2 Lintels and arches.**

The masonry above openings shall be supported by arches of masonry or lintels of steel or reinforced concrete, which shall bear on the wall at each end for not less than 4 inches and shall be supported as required for concentrated loads.

**305.3 On masonry construction.**

All structural members producing concentrated loads shall have bearings at least 3 inches in length upon solid masonry not less than 4 inches thick. Metal bearing plates of adequate design and dimensions but not less than ¼ inch thick may be used.

**305.4 Support on wood.**

No masonry construction shall be supported on wood construction. No timber except nailing blocks not exceeding an ordinary brick in size, shall be built in as part of masonry walls.

**Sec. 306. STRUCTURAL STEEL AND IRON-WORKING STRESSES,****DESIGN AND FABRICATION.**

Compliance with the standards set forth in the "Specification for Design, Fabrication and Erection of Structural Steel for Buildings," as adopted by the American Institute of Steel Construction, fourth edition 1942, shall be acceptable.

**Article III****SAFETY PROVISIONS****Part Two — Fire Protection****Sec. 307. FIRESTOPPING.****307.1 General.**

Firestopping shall be supplied at the locations specified in this section and shall be so arranged as to cut off all concealed draft openings and form an effectual fire barrier between stories and between the upper story and the roof space.

**307.2 Exterior walls.**

**1. WOOD CONSTRUCTION.** Exterior walls of wood construction shall be properly firestopped at each floor level and at the level where the roof rafters connect with the wall plate.

**2. FURRED SPACE.** For all masonry walls that are furred or studded off, the space created by the furring or studding shall be properly firestopped once in each story. Space around chimneys shall be firestopped with incombustible material.

**307.3 Partitions.**

Where stud partitions rest directly over each other and the studs run down between the floor beams and rest on the top plate of the partition below, the spaces between the studding shall be properly firestopped.

**307.4 Stairs.**

The space between stair carriages shall be firestopped by a header beam at top and bottom. Where a stair run is not all in one room or where a closet is located beneath the stairs, the stair carriage shall have an intermediate firestop so located as to cut off communication between portions of the stairs in different rooms or between the closet and the room in which it is placed. Such stops shall be made of plank or other suitable material.

**307.5 Pipes or ducts.**

Where any pipe or duct passes through a floor, the space between the pipe or duct and floor construction shall be firestopped. Where the installation of pipes, ducts or conduit in walls, floors or partitions require the removal of any firestopping, the spaces around the pipes, ducts or conduit at such points where such firestopping was removed, shall be tightly filled with asbestos, mineral wool or other incombustible material.

**307.6 Inspection.**

No firestopping shall be concealed from view until opportunity has been given the building inspector to inspect the same.

**Sec. 308. CHIMNEYS, FLUES, AND SMOKE PIPES.****308.1 General.**

Chimneys shall be constructed in accordance with good practice provided that the specific requirements of this Code shall be observed.

**308.2 Construction of chimneys.**

**1. MATERIALS.** Chimneys shall be constructed of brick, stone or of reinforced concrete. When constructed of laid-up masonry units, such units shall be not less than 3½ inches wide laid with full head and bed joints of Type A or Type B mortar (see Section 301.1 of this code). No chimney shall be constructed unless it shall first have been proven to the satisfaction of the building inspector to be the equal of or superior to solid masonry units. Flue linings shall be required under conditions indicated in another part of this section. Variations from specific requirements noted herein shall be subject to the approval and labeling requirements of the building inspector.

**2. FOUNDATIONS.** Masonry or reinforced concrete chimneys shall not rest upon or be carried by wood floors, beams or brackets, nor be supported by metal stirrups from wood construction but shall be built upon concrete or masonry foundations or reinforced concrete slabs properly proportioned to carry the load without danger of settlement or cracking. The footing shall rest on solid earth and shall be carried below the frost level.

**3. BONDING.** Masonry or reinforced concrete walls of buildings may form parts of chimneys when the chimney walls are securely bonded into the walls of the building and when the flue is lined with flue lining the same as an independent chimney.

**4. CORBELING OF CHIMNEYS.** Corbeled chimneys shall not be supported by hollow walls, cavity walls or walls of hollow units. Solid walls supporting corbeled chimney shall not be less than 12 inches thick and corbeling shall not project more than 1 inch per course and not more than 6 inches in any case. The total offset overhang of corbel of an independent chimney shall not exceed 3/8 of the width of the chimney in the direction of the offset.

**5. HEIGHT.** Chimneys shall be built at least 3 feet above flat roofs provided that the tops of



**309.5 Fireplaces.**

1. **USE OF FIREBRICK.** The backs and sides of fireplaces shall be of solid masonry not less than 8 inches in thickness. A lining of firebrick at least 2 inches thick or other approved material shall be provided unless the total thickness is 12 inches.

2. **INCOMBUSTIBLE HEARTH.** Fireplaces shall have hearths of brick, stone, tile or other approved noncombustible material supported by a fireproof slab or on brick trimmer arches. Such hearth shall extend at least 16 inches outside the chimney opening at the breast and not less than 8 inches on either side of the fireplace opening along the chimney breast. The combined thickness of hearth and supporting construction shall not be less than 6 inches at any point, provided that where designed and used for approved gas appliances only, the construction shall be such as shall fully meet good standard practice.

**309.6 Water heaters.**

Water heaters shall be connected to smoke flues or outlet pipes as hereinbefore provided for gas appliances, provided that such connection may be waived by the building inspector if the water heater is of type which cannot produce an explosive mixture of asphyxiating condition in the room or space where it is located.

**309.7 Additional requirements.**

Except as may be otherwise provided by this section, the standards set forth in the Building Code, 1943 edition recommended by the National Board of Fire Underwriters of New York (copy on file in the office of the building inspector) shall be used by the building inspector as a guide for acceptable construction and installation of the following items:

Mounting and Clearances of Heating Furnaces, Boilers, Cooking Appliances, Floor Furnaces, Steam and Hot Water Pipes, Warm Air Heating and Air Conditioning Systems.

**Sec. 310. ELECTRICAL WIRING AND OUTLETS.**

The installation of all electrical work including equipment shall in every case be done in a safe and workmanlike manner. The regulations of the National Electrical Code, 1951 edition, shall be considered as good standard practice by the building inspector. Installations shall comply with the requirements of the electric utility company serving the area. Such code and regulations as it applies to any building shall be the latest edition of that code effective at the time of beginning of construction of such building.

**Sec. 311. COMBUSTIBLE MATERIALS AND STORAGE PLACES.**

No dwelling or any part thereof nor of the lot upon which it is situated shall be used as a place of storage, keeping or handling of any article dangerous or detrimental to life or health; nor of any combustible article, except under such conditions as may be prescribed by the building inspector under authority of a written permit issued to the occupant of the dwelling.

**Sec. 312. PRIVATE GARAGES.**

No garage not of fireproof construction shall approach closer to any portion of the dwelling or enclosed projection thereof than 6 feet except as provided below.

**312.1 Attached or adjacent garages.**

Storage garages having not more than 500 square feet of floor area may be attached to or erected within 6 feet of a dwelling provided that the interior face of all walls not of masonry construction and the ceiling of such garage, where the roof is not of fireproof construction, shall be protected with not less than 3/4 inch of gypsum or portland cement plaster on metal lath or 3/8 inch gypsum plaster on 3/8 inch gypsum lath.

**312.2 Garages located under dwellings.**

Storage garages having not more than 400 square feet of floor area may be located under a single dwelling, provided that the interior face of all walls of the garage not of masonry construction and the ceiling of such garage where the floor above is not of fireproof construction, shall be protected with not less than 3/4 inch of gypsum or portland cement plaster on metal lath or 3/8 inch gypsum plaster on 3/8 inch gypsum lath. Any stairway communicating with the dwelling above the garage below shall be separated from the garage by a wall protected on the garage side as required for the enclosing walls of the garage and equipped with a self-closing fire door at the garage floor level.

**Sec. 313. ROOFING.**

Readily ignitable and hazardous roofing materials such as light asphalt or tar-impregnated paper and straw thatch, shall not be permitted.

**Sec. 314. STAIRWAYS.**

314.1 **Headroom.** All stairs shall have unobstructed head room of at least 6 1/2 feet measured vertically above the tread in line with the face of the riser.

**314.2 Risers and treads.**

1. **STRAIGHT TREADS.** In straight treads the run of the treads shall be not less than 9 inches wide and the rise shall be not more than 7 1/2 inches high and tread shall be so proportioned to rise that the sum of the height of 2 risers in inches, and the width of one tread in inches is not less than 24 nor more than 25 inches. The width of tread including nosing shall be not less than 10 1/2 inches.

2. **WINDERS.** Where winders are used the width of the tread at a point one foot from the center of rail or newel shall be not less than 8 inches, and at a point 2 feet from the center of the rail or newel the width of the tread shall be not more than 12 inches.

**314.3 Width.**

All stairways (except basement and grade landings) shall be not less than 3 feet in width in the clear. A handrail shall be provided on the open portion of stairs which are not adjoining a wall or partition.

**314.4 Basement stairs.**

Basement stairs may be of the ship ladder type with a rise of 8 inches per tread and a minimum distance of 8 1/2 inches from face to face of riser.

**Article IV****PUBLIC HEALTH, SANITATION AND GENERAL WELFARE****Sec. 400. LIGHT AND VENTILATION.****400.1 Yards.**

Yards shall conform to front, side and rear yard requirements of the Village of Wixom zoning ordinance.

**400.2 Light and ventilation of habitable rooms.**

1. The total glass area of required windows in any habitable room shall be not less than one-tenth of the floor area of the room.

2. The total area of the ventilating portion of required windows in any habitable room shall be not less than 3 per cent of the floor area.

**400.3 Light and ventilation of bathrooms and water closet compartments.**

Bathrooms and water closet compartments shall be provided with natural light and/or ventilation by one of the following means:

1. A window which has a glass area of not less than 10 per cent of the floor area and is located in an exterior wall facing a street, alley, yard, or facing air shaft open to the sky, having a minimum width of 3 feet. Such windows shall have a ventilating area equal to 50 per cent of the glass area.

2. Skylight, the construction of which shall provide light and ventilation to the outside air, equal to that ventilation required in item 1 above.

3. Ventilation ducts, provided such ducts have 2 square inches of area for each square foot of floor area with a minimum total area of 48 square inches and at least dimension of 3 1/2 inches. The vent register or grills to the duct shall be located in or next to the ceiling ventilated space. A separate duct from each space or room shall run to and above the roof and shall be provided with a louvered stack, provided however, when an exhaust fan is used the duct opening may be located in an outer wall.

**400.4 Light and ventilation of laundry and recreation rooms.**

Laundry and recreation rooms located above the basement shall be lighted by windows located in exterior walls having a glass area of not less than 10 per cent of the floor area and having a ventilating area not less than 4 per cent of the floor area.

**400.5 Ventilation of basement and cellars.**

Basements, cellars and all rooms located therein except storage rooms shall be lighted and ventilated by windows in exterior walls having both a glass and ventilating area of not less than 1 1/2 per cent of the floor area.

**400.6 Ceiling heights.**

The minimum ceiling height in any room exclusive of a room used only for storage purposes shall be 7 feet, 6 inches except under sloping roofs where the minimum shall be 7 feet, 6 inches for not less than 50 per cent of the floor area.

**Sec. 401. PLUMBING.****401.1 General.**

The installation of all interior plumbing work shall comply with Articles 1 to XI inclusive of the State Plumbing Code of Michigan. In areas where the State Plumbing Code is in effect, evidence showing approval by the state plumbing inspector shall be required after final plumbing tests have been made.

**401.2 Plumbing fixtures.**

1. Within each living unit there shall be provided the following plumbing fixtures:

a. A kitchen sink properly located to facilitate food preparation and dishwashing.

b. A water closet located either in the bathroom or in a separate toilet compartment.

c. A bathtub or shower located in a bathroom or other equivalently ventilated space.

2. Each of the plumbing fixtures shall be permanently installed and connected to the plumbing system.

**Sec. 402. WATER SUPPLY.****402.1 Safe water supply required.**

Every living unit shall have available a supply of safe water obtained from (1) a public or municipal water supply if available; (2) a drilled, driven or dug well.

**402.2 Private water supply.**

When a private water supply is required, the type, location and construction of the well shall be in accordance with recommendations of the Michigan Department of Health as outlined in Engineering Bulletin No. 14, 1947 edition entitled "Ground Water Supplies for Homes and Small Institutions."

**Sec. 403. SEWAGE DISPOSAL.****403.1 Public sewer system.**

Connection shall be made to a public sewer system when available. The sewer line extending from the dwelling to the sewer in the street, alley or basement shall be at least 4 inches in diameter and have a fall

of at least 1/8 inch per foot. Such sewer shall be constructed of impervious material and have watertight joints. The installation of the house sewer and its connection to the public sewer shall not be covered until inspected and approved by the building inspector.

**403.2 Private sewer system.**

When a private sewer disposal system is required the type, size and construction of all septic tanks, tile disposal fields or seepage pits shall be in accordance with recommendations of the Michigan Department of Health, Engineering Bulletin No. 2, and Michigan State College, Extension Bulletin No. 118, second revision, as outlined in their joint bulletin of June 1941 entitled "Septic Tank Sewage Disposal Systems for Michigan."

**403.3 Discharge of sewer systems.**

1. The house sewer or septic tank outlet shall not directly discharge into an open ditch, drain or stream nor into a closed drain which eventually empties into an open ditch, drain or stream.

2. No storm water from roofs or catch basins designed to carry surface water from public or private property shall be discharged into a sewer system designed to carry sanitary sewage only, unless specific approval is given by the Village Council.

**Sec. 404. DAMPROOFING.**

On existing dwellings if in the opinion of the Building Inspector water conditions necessitate damp-proofing basements the exterior walls below finish grade shall be protected by means of membrane water proofing or other satisfactory methods.

**Sec. 405. RAT AND VERMIN-PROOFING.****405.1 Openings screened.**

Any openings placed in exterior walls of dwellings beneath the first floor level such as those used for ventilation shall be completely closed off with non-corrodible 16 mesh wire cloth and a substantial grille. All such materials shall have openings not more than 1/4 inch in size.

**Sec. 406. SIZES AND NUMBER OF ROOMS.****406.1 Room requirements.**

Every dwelling structure shall conform in area to requirements of the Village of Wixom zoning ordinance and shall have not less than 2 rooms and one bathroom.

**406.2 Sleeping room.**

One room shall be designed for sleeping use and shall have a floor area of not less than 120 square feet. Where more than one bedroom is provided one bedroom shall have not less than 100 square feet and all other bedrooms shall have not less than 80 square feet of floor area.

**406.3 Living room.**

1. A living room shall be designed for living use. When it is used only as a living room and space is provided elsewhere for cooking and eating, this room shall have not less than 150 square feet of floor area.

2. Where this room provides the only eating space in the structure it shall be increased by not less than 40 square feet of floor area.

3. Where this room provides the only space for living, cooking and eating, it shall have a floor area of not less than 220 square feet.

**406.4 Bathroom.**

The bathroom shall be of adequate size and properly planned to accommodate the fixtures as specified under Section 401.2 parts (b) and (c) of this Code.

**Sec. 407. PRIVACY.****407.1 Doors required.**

Each door opening which provides entrance to a bedroom or bathroom or toilet compartment shall be provided with a hinged door.

**407.2 Access to bathroom.**

In dwellings containing not more than 2 bedrooms, access from the bedrooms to an only bathroom shall be had without passing through another habitable room. In dwellings containing 3 or more bedrooms access to the bathroom from 2 of the bedrooms shall be had without passing through another habitable room.

**407.3 Access to other rooms.**

Access to a living room or to any bedroom shall be had without passing through a bedroom.

**Sec. 408. BASEMENT ROOMS.**

No habitable room shall be located in a basement, unless such room shall have 1/2 of its height from floor to ceiling above the ground elevation (finished surface) in the proximity of the windows of the room. All habitable rooms in basements shall have sufficient light and ventilation as required for rooms of similar use above grade and shall be sufficiently well drained to remain dry.

**Article V****ADMINISTRATION****Sec. 500. BUILDING PERMITS.**

Before proceeding with the erection, alteration or removal of any residential building, a permit shall first be obtained by the owner or his agent from the building inspector. The application shall be made in writing and upon printed forms furnished by the building inspector. To determine satisfactory compliance with requirements the application shall be accompanied by 2 complete sets of plans and specifications conforming to requirements of Section 501 of this Code. When plans and specifications shall be found to conform with the provisions of this Code, the building inspector shall issue a permit, and when a private water supply or sewage disposal system is necessary he shall notify in writing the local health officer. One copy of the plans and specifications shall remain on file with the records of the building inspector, the other set to be stamped and kept at the construction site for reference until completion of the building.

**Sec. 501. PLANS AND SPECIFICATIONS.**

501.1 **Site map.** Drawings shall include a site map drawn to scale, adequately dimensioned, clearly showing the exact location of all structures existing or to be constructed. When a private water supply or sewage disposal system is necessary, the site map shall show the location of proposed well, septic tank and disposal field in addition to existing wells, septic tanks, sewer lines, drains, sewage disposal fields, seepage pits, privies and cesspools within 100 feet of the dwelling.

**501.2 Yards.**

Front, side and rear yards shall be clearly indicated.

**501.3 Building plans.**

These drawings shall include (1) floor plans of all habitable floors and the basement or foundation plan and such drawings shall clearly indicate sizes and spacings of all supporting members, sizes of rooms, glass areas, door openings and stair runs; (2) a sectional drawing which shall clearly indicate sizes of footing, thickness of basement walls and all floor slabs, wall construction, sizes and spacing of framing members, ceiling heights and parapet heights.

**501.4 Material equipment.**

Specifications describing the quality, kind, and grade of material and equipment, may be required, if not clearly shown on drawings.

**Sec. 502. FEES.**

For each building permit issued, a fee shall be charged according to the following schedule:

**Residential (minimum fee \$7) — \$2 per \$1,000 valuation of work or part thereof.**

Commercial and industrial (minimum fee \$7) — \$2 per \$1,000 valuation of work or part thereof, up to \$50,000.

— \$1.50 per \$1,000 valuation of work or part thereof from \$50,000.01 to \$500,000.

— \$.75 per \$1,000 valuation of work or part thereof, from \$500,000.01 to \$1,500,000.

— \$.50 per \$1,000 valuation of work or part thereof over \$1,500,000.01.

**Sec. 503. INSPECTION.****503.1 Building Inspector.**

This code shall be administered by the Supervisor, building inspector and such assistant inspectors as may from time to time be authorized and appointed by the Village Council. In the discretion of the Village Council, the duties of the building inspector or any assistant inspector may be combined with those of any other officer or employee of the Village.

**503.2 Qualifications of building inspector.**

To be eligible for appointment as building inspector such person shall be generally informed on the principles and practices of good building construction, and on good practice in fire prevention, and the proper installation of plumbing, heating and electric wiring of residential buildings in the course of construction. In case he is personally interested in the construction of any building subject to the provisions of the Code, the Village Council shall designate some other person to examine the plans, to inspect such building and to issue the necessary permits, approvals and certificates.

**503.3 Notifications.**

As work progresses under a building permit the holder thereof shall cause the building inspector to be notified at the following stages of construction:

1. Upon completion of the footings and before erection of the foundation walls.

2. Upon completion of the rough frame of the structure including the application of roof shingles and side wall sheathing and the installation of rough plumbing, rough electrical wiring, and concealed heating ducts or pipes, chimneys and before lath is applied.

3. Upon total completion of the work authorized by the building permit and before occupancy.

**503.4 Inspections and approvals.**

1. Each inspection shall be made within 2 working days following receipt of notification. At the first inspection the building inspector shall determine to the best of his ability that the building has been located in accordance with the site maps and yard areas will comply to the Code requirements.

2. If the construction meets the requirements of this Code at the stage of any inspection, the building inspector shall issue his written approval thereof and the permit holder shall thereupon be authorized to proceed in accordance with the building permit.

**503.5 Violations and cancellation of permit.**

1. Should the building inspector determine that the construction is not proceeding according to plan filed or is in violation of any provisions of this Code or any other applicable ordinance, regulation or law, he shall so notify the permit holder and further construction shall be stayed until correction has been effected and approved by the building inspector upon notice and request for re-inspection duly made.

2. Should the permit holder fail to comply with the requirements at any stage of construction the building inspector is hereby empowered to cancel the building permit issued and shall cause notice of such can-

cellation to be securely posted upon said construction. Posting of such notice shall be considered sufficient notification to the permit holder of cancellation thereof. No further work shall be undertaken or permitted upon such construction until a valid building permit shall thereafter have been issued.

**503.6 Certificate of compliance.**

No building hereafter constructed or altered into a dwelling shall be occupied in whole or in part for human habitation until the issuance of a certificate by the building inspector affirming that such dwelling conforms in all respects to the requirements of this Code. Such certificate shall be applied for, coincidentally with the application for a building permit and shall be issued not more than 5 days after the lawful erection, alteration or removal is complete and final inspection has been made.

**503.7 Certificate of temporary occupancy.**

If a building which has been constructed as or altered into a dwelling is to be occupied in whole or in part for human habitation prior to official notice of complete compliance with the provisions of this Code, such occupancy will be unlawful until the owner has obtained a certificate of temporary occupancy from the building inspector stating that such dwelling is suitable for human habitation prior to official notice of complete compliance with the provisions of this Code. This certificate of temporary occupancy shall cover a period not exceeding 6 months and shall in no way supersede or replace the final compliance inspection of the premises by the building inspector, as provided by Section 503.6.

**Sec. 504. PENALTY FOR VIOLATION OF CODE.**

Any person who shall violate any provision of this Code shall be deemed guilty of a misdemeanor and upon conviction thereof punished by a fine not to exceed \$100.00 and the costs of prosecution, or in default of the payment thereof by imprisonment in the county jail of not to exceed 90 days or by both such fine and imprisonment in the discretion of the court. Each day that a violation is permitted to exist shall constitute a separate offense. The imposition of any sentence shall not exempt the offender from compliance with the requirements of this Code.

**Sec. 505. BOARD OF APPEALS.**

In order that the provisions of this Code may be reasonably applied and substantial justice done in instances where practical difficulties are apparent or unnecessary hardship would result in carrying out the strict letter of this Code, a board of appeals shall consist of the Village Council whose duty it shall be to consider appeals from the decision of the official charged with the enforcement of this Code. Said board of appeals shall be the village board of appeals appointed under Act 207 of the Public Acts of 1921.

**Sec. 506. ENFORCEMENT.**

That any violation of this ordinance shall be a nuisance per se and may be abated or enjoined by suit by the village.

**Sec. 507. SUB-STANDARD DWELLINGS.**

Dwellings in existence at the effective date of this ordinance that do not conform to sections: 307.1, 307.2, 307.3, 307.4, 307.5, 308.1, 308.2, 308.3, 308.4, 308.5, 309.1, 309.2, 309.3, 309.4, 309.5, 309.6, 309.7, 310, 311, 313, 400.2, 400.3, 400.4, 400.5, 400.6, 401.1, 401.2, 402.2, 403.2, 403.3, 404, 406.1, 406.2, 406.3, 406.4, 407.1, 407.2, 407.3, 408, are hereby declared to be sub-standard dwellings. Such sub-standard dwellings may be occupied for a period of eighteen months from and after the effective date of this ordinance, but not longer. Unless such substandard dwellings have been improved so that they can conform to the enumerated sections herein mentioned and are no longer sub-standard, occupancy eighteen months from and after the effective date of this ordinance as a dwelling shall be deemed a violation of this ordinance. Each day of such illegal occupancy shall be deemed a separate violation and penalties for such separate violation shall be deemed cumulative.

From and after eighteen months from the effective date of this ordinance the Board of Appeals may grant, upon application in case of proven hardship, extensions not to exceed six months in duration allowing occupancy of sub-standard dwellings. Provided, that in no instance shall occupancy of sub-standard dwellings be permitted from and after three years from the effective date of this ordinance.

**Sec. 508.**

Forbearance in enforcement of this ordinance shall not be deemed condonation of violation.

**Sec. 509. REPEAL.**

All former ordinances or parts of ordinances inconsistent or in conflict with the provisions hereof are hereby repealed.

**CONSTITUTIONALITY.**

If any provision of this Code or the application thereof to any person or circumstance is held invalid, such invalidity shall not affect other provisions or applications of the Code which can be given effect without the invalid provision or application, and to this end the provisions of this Code are declared to be severable.

This ordinance affecting the public health, safety, morals and welfare shall be effective 30 days after its publication in a newspaper of general circulation in the Village of Wixom.

Passed this 12th day of August, A.D., 1957, by the Village Council, Wixom, Michigan.

Yeas — Abrams, Birchard, Chambers, Tuck and Wagnitz

Nays — None.

Absent — Mettala

JOSEPH T. STADNIK, President

LILLIAN BYRD, Clerk

# NORTHVILLE PUBLIC SCHOOLS

## TENTATIVE BUS SCHEDULE

SEPTEMBER — 1957

THE FOLLOWING SCHOOL BUS SCHEDULE WILL BE IN EFFECT BEGINNING SEPTEMBER 4, 1957 AND UNTIL FURTHER NOTICE.

**BUS 1**

SERVING AREA: NAPIER ROAD BETWEEN 7 AND 8 MILE ROADS; EIGHT MILE ROAD FROM CURRIE ROAD TO TAFT.

Schoolbound—Leave yard .....7:43 a.m.

West 7 Mile and Napier Rd. ....7:50

West 8 Mile and Napier Rd. ....7:53

West 8 Mile and Currie Rd. ....7:58

West 8 Mile and Chubb Rd. ....8:00

West 8 Mile and Napier Rd. ....8:03

West 8 Mile and Garfield Rd. ....8:06

West 8 Mile and Beck Rd. ....8:09

West 8 Mile and Taft Rd. ....8:12

Amerman School .....8:15

Main Street School .....8:20

Homebound — Reverse above schedule beginning at 3:35 p.m.

**BUS 2 — Route 1**

SERVING AREA: TAFT ROAD BETWEEN 8 MILE AND 10 1/2 MILE; 10 MILE BETWEEN TAFT AND NOVI ROADS, NOVI ROAD BETWEEN 10 AND NORTHVILLE CITY LIMITS.

Schoolbound—Leave yard .....7:30 a.m.

Taft and W. 8 Mile Rd. ....7:33

Taft and W. 9 Mile Rd. ....7:37

Taft and W. 10 Mile Rd. ....7:40



## SPEAKING

## for the Record

By BILL SLIGER

Roy Stone and his four boys returned last week from a motorcade through 12 states. They visited the capitol city of each state and took a picture of the capitol buildings. There's a unique post-card trail in the Gamble store window showing the route of the "Rolling Stones" through Michigan, Wisconsin, Minnesota, North and South Dakota, Montana, Wyoming, Colorado, Nebraska, Kansas, Missouri and Illinois. Roy says the bears in Montana are a wee bit too friendly.

\* \* \*

Speaking of vacations, we took the long-weekend variety to visit friends in Cadillac. While there we met a former Northville resident, Bill Groomer. He graduated from Northville high school and Tri-State college and is now an engineer with the State Highway department and resides in Cadillac.

It's been three years since our last visit to Cadillac and, though the stay was a short one, it was pleasant renewing old friendships and also seeing how the area has changed since we worked on the Cadillac Evening News seven years ago. Residents tell us that it has been the best tourist season in years. All cabins, cottages and motels around Cadillac and Mitchell lakes are enjoying busy seasons.

Industrially speaking, there seems to have been very little progress. We understand the same is true of the Traverse City area. One new shopping center is under construction in Cadillac which will feature a Kroger store and smaller retail firms.

But from what we could observe, it looks like the future of these northern Michigan communities lies in the tourist trade. Cadillac has all the natural requirements: lakes, fishing, hunting, skiing at Caberfae plus plenty of hills and woodlands. Commercial development seems slow, however. Most tourists require more than the beauty of nature to attract them and the progressive vacation areas realize this.

\* \* \*

Driving down US-16 we couldn't help notice the new fourth lane rapidly erected by John Mackie, the new highway commissioner. The job was done in record time and was definitely a good idea. But one small oversight has made the highway more dangerous than ever. With the old white and yellow markings still in use drivers are passing on what is actually the "third" lane. If there was a center line painted to divide the highway into two equal lanes on each side, this would be avoided. As it is, most drivers are afraid to use the new lane and consequently US-16 remains as a three-lane highway.

\* \* \*

We're especially happy that The Novi News was named the official paper of the village of Wixom by the council last week. The brand new village, which includes the Lincoln plant, is starting its organizational work with weekly council meetings. News circulation in Wixom has jumped tremendously and interest in village affairs among residents is intense. Meetings are well attended and it appears that the council will have little trouble in finding volunteers to serve on the many committees required to start a village government.

## VACATION LOANS

Arranged quickly and confidentially by telephone and one trip to our office.

If you need money in a hurry, to meet unforeseen expenses, pay medical or dental bills, repair house or auto, buy clothing or take that long awaited vacation:

PHONE or COME IN TODAY!

Private  Courteous

Fast

LOCALLY OWNED &amp; OPERATED

PLYMOUTH FINANCE CO.

274 S. Main, across from Plymouth Mail, Phone 1630

## VISIT YOUR NEIGHBORHOOD SAVINGS OFFICE

## Let Savings Grow as Your Youngsters Grow

Whatever future you have in mind for your children, it will take MONEY! College education, a start in business, or happy marriage and a home, become REALITIES when you save through the years for them. Any amount opens your insured savings account here.

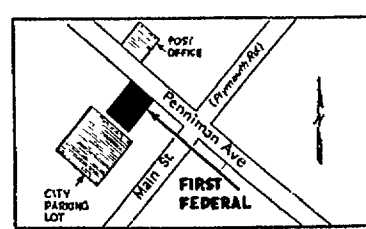
Assets over 225 millions

3%  
Current  
Rate

**FIRST FEDERAL SAVINGS**  
OF DETROIT

Penniman Ave., Plymouth

Downtown Headquarters  
Griswold at Lafayette,  
across from old City Hall



**The Northville Record**  
Published by The Northville Record, Inc., 101 North  
Center Street, each Thursday. Entered as second class  
matter at the U. S. Post Office, Northville, Michigan.

Member:

Michigan Press Association  
National Editorial Association



**SUBSCRIPTION RATES:**  
\$3.00 per year in Michigan, \$4.00 elsewhere.  
Plant Superintendent ..... Wm. Yockey  
News Editor ..... Robt. Webb  
Society Editor ..... Sally Ayler  
Publisher ..... William C. Sliger

## Michigan Mirror

## State Seeks Jobs

THERE ARE 235,000 more workers than jobs in Michigan.

In an economy based on work for everybody, lack of it has become a crisis, and state government is looking for a solution.

Gov. Williams was told in July that 195,000 were idle and the forecast of 235,000 unemployed by mid-August was made. This dramatically emphasizes the strange outlines of Michigan's peculiar economy.

Williams touched on it when he described unemployment as a "public emergency" and sent his aides off on a quest for facts on which to base a program of full employment recovery.

\* \* \*

For better or for worse, the state and its people are linked inexorably to the fortunes of the automobile industry.

Parts and fabricating plants employing a relatively few men and women fan out from the big industries in Detroit. When the auto industry is down, business generally suffers.

Eventually, it means less money for schools because people must buy fewer goods. The sales tax and now a liquor and cigarette tax increase, help support education.

\* \* \*

Neither Williams, nor the unemployed want another depression-era WPA.

Three years ago when the hit sort of unemployment crisis hit Flint and Detroit, appeals were made to the Federal Government for some form of public works.

\* \* \*

It was not forthcoming then because the Eisenhower administration said it would not do the job. Now, the analysis finds agreement in the present Michigan crisis.

"Men trained for factory jobs couldn't be put to work even temporarily on something like that," said one administration spokesman.

The point is, Williams and his aides agree to find some method of keeping the large and skilled working force on the job.

Part of the trouble lies in auto shutdowns and model changeovers, resulting from an increasingly torrid competition among the Big Three, Ford, General Motors and Chrysler.

\* \* \*

There are no answers yet. State government will base its actions on findings of a survey showing the areas of unemployment, which industries are affected, the work record in industrial versus non-industrial work, and whether automation is creating a shortage of jobs.

Officials believe the General Motors model changes will be more pronounced this year, delaying the

period of full production with maximum employment into the late fall. Ford is believed to be planning changes too.

Chrysler made its big remodeling last year.

As a result of the larger number of unemployed this year, Republicans are looking for a Democratic campaign next winter to increase the size of the weekly unemployment compensation checks.

HIGHWAYS HAVE BEEN unhappy ways politicians over the past few years.

Democrats for years have attached former Highway Commissioner Charles M. Ziegler. He left office and a Democrat took over July 1, leaving word he was "going fishing."

John C. Mackie started work immediately, despite legal threats still hanging over his eligibility for office.

First, he awarded a temporary route to eliminate traffic congestion on US-16 between a large state park, Kensington and Detroit.

Then he announced that Detroit would need 250 miles of new expressways and at least one of them would have to link Michigan's largest city with the state highway system.

Republicans, watching this activity, then snuffed:

"If Mackie just connects all the highways Ziegler started, he will have nothing much to do during the first three years of his term."

\* \* \*

Mackie is ignoring all the talk. Last week, he said he would start a five-year program for highway construction within two months.

Part of the plan, he indicated, will be a superhighway route from the southern part of the state to the Straits of Mackinac where the \$100,000,000 straits bridge is due to open November 1.

Incidentally, Gov. Williams will be the first motorist over the span which links Michigan's two peninsulas.

And, he will pay the toll — about \$3 for his chauffeured limousine — just to set an example.

## Ex-Northville Man Is Sales Trainee

Keith E. Simons, a native of Northville and a 1952 graduate of Michigan State university has joined Caterpillar Tractor company as a college graduate sales trainee.

He will take part in approximately 18 months of classwork and field study of product applications before assignment to a position in the company's sales department.

Simons, the son of Mr. and Mrs. Ralph Simons of Northville, is active in boy scout work, Masons and church functions. He is married to the former Lois Taft of Northville. They are the parents of two sons and a daughter. The family resides at 300 Wagner, Washington, Illinois.

## Professional Directory

**DR. STUART F. CAMPBELL**  
— Optometrist —  
120 N. Center Northville  
Phone 1102  
Closed Thursday

**DR. HUGH G. GODFREY**  
— Dentist —  
107 E. Main Street Northville  
Phone 784

**CLIFTON D. HILL**  
— Attorney —  
Office Hours 9-5  
Saturday by Appointment  
127 E. Main Phone 700

**DR. J. E. HARRIS**  
— Dentist —  
158 E. Main St. Northville  
Phone 894

**CECIL B. JACKSON, D.O.**  
— Osteopathic —  
— Physician - Surgeon —  
Phone: Office - Northville 1161

**DR. J. K. EASTLAND**  
— Dentist —  
120 North Center Phone 130  
146 North Center St.  
Hours by Appointment

## Roger Babson

## Higher Wages Cause Inflation Threat

Babson Park, Mass. — What is really causing the inflation buildup and how can it be arrested? Among causes suspected are the unchecked wage demands of labor and the government's earlier mistake in pressing for easy-money policies.

## Business Enthusiasm Declining

The way to check the inflation spiral, many say, is through credit restriction. Certainly, without the willingness of business and consumers to assume debt, there could not have been the kind of spending which had led to the expansion and production seen in recent years. Without these tonics neither production nor prices could have risen as they have.

Gradual inflation may continue to the point where the turnover of money will have finally reached its limit. Should too many businesses or consumers become suddenly pessimistic with regard to conditions, an about-face could occur rather quickly. My personal poll of businessmen gives indications of waning confidence.

## Labor's Share Increasing

Both businessmen and consumers should understand that unbridled spending cannot help but intensify the inflationary threat. Is it possible that the only solution is tighter direct government controls for all? But even if both the businessman and the consumer should become frightened by the inflationary spiral, I believe the full effects need not be felt for several months to come.

Despite the current business sentiment, production in June and July about equaled the April and May

levels. Employment is up, Retail sales are ahead of totals for last year at this time. The factory work week, though slightly longer at latest report, falls short of that for the same period in 1956.

The increased number of hours worked pushed weekly earnings in manufacturing up about 80c in June over May to an average of \$82.59, resulting in a year-to-year gain of more than \$3 per week.

Construction activity, which had been lagging earlier in the year, is picking up. Chemicals, rubber and utilities are on the uptrend. Gross national product has passed the \$430-billion mark. Even with due allowance for higher prices, all of the foregoing suggests continued heavy spending.

## Important Statistics To Remember

Let us not forget certain basic ingredients of our economy. Today, we see about one million new family formations per year, with all the resulting wants and needs. This compares with a figure of 500,000 in 1940. The longer life span of our oldsters is adding a large non-producing segment to our population at one end; while the high birth rates following World War II are creating another big group of dependents at the other end.

In the middle are the workers, shrunken abnormally in numbers by the low birth rate of the depressed 1930's.

Upon this relatively small worker force falls the burden of production. The solution to the problem lies in a vastly increased rate of output per worker — or in a decline of total demand. Stepped-up automation may be the real answer — but this change will come slowly. I therefore conclude that Labor Leaders hold the reins; they must be responsible for the ultimate results. They, and the politicians who fear them, will surely cause a smash-up unless they stop demanding constant wage increases.

## Remaining 1957 Months

Bonds are selling lower than for over 20 years. This is not a good sign. Stocks are not holding up. Many commodities are slipping in price. Investment sentiment and reported earnings show up well so far in July. I, however, believe that readers will do well to take profits and deposit the money in banks where they can get three to four percent awaiting a good break in the stock market.

Businessmen should gradually get out of debt and prepare for very severe and unprofitable competition.

**V.F.W.**  
**Northville Post 4012**  
**438 Plymouth Ave.**  
Regular Meetings:  
First and Third Tuesday  
of Each Month

## C. HAROLD BLOOM

Complete Insurance Service

• AUTO • FIRE • PLATE GLASS • LIABILITY  
• WIND STORM •

PHONE 470 OR 3

108 West Main Street

Northville, Michigan



## Keeping Current... For Economy!

In the illustration above, you see a very happy man at a very wonderful moment.

The title, the keys and the car are his—and he's starting out on his first journey at the wheel. Of course, there's not much doubt as to why he decided to purchase a new Cadillac.

Like everyone else who selects the "car of cars", he did it to "keep current", so to speak, on all of Cadillac's new miracles of performance and beauty and comfort.

But coming to Cadillac, as he did, at this particular time of the year, we also suspect that he was inspired by the added motive of practicality.

For in addition to the normal Cadillac economies of modest purchase price, low operating cost and

high resale value—Cadillac dealers are, at this time, seasonally prepared to make Cadillac ownership even more attractive than ever.

Because of the demand for used cars and because of increased production of the Cadillac car itself, the odds are that this gentleman received both a generous allowance on his previous car and prompt delivery of his new Cadillac.

Have you considered how wonderful it would be to step into a Cadillac of your own? Then, you should pay your dealer a visit—spend an hour on the highway in the luxury of Fleetwood coachcrafting—and get the facts for yourself.

You'll agree, we know, that the car is Cadillac—and the time is now!

VISIT YOUR AUTHORIZED CADILLAC DEALER