

Sun finally shines for sidewalk sale

A scorching sun replaced the previous weekend's constant drizzle for the postponed sidewalk sale downtown and the result was, as one organizer, John Beuter, put it: "an unqualified success." In spite of the heat, which pushed 90 degrees most of the day, thousands of bargain-hunters turned out to peruse dozens of booths of merchandise from furniture and glasswork to clothing and such items as antique saws, as dealer Catherine Montgomery brandishes, right. Record photos by Chris Boyd.



Schrader's

Summer Sale

Cherry Towne Bedroom

- INCLUDES:
- 66" Dresser
 - Jewel Box Tray
 - Mirror
 - Chest on Chest
 - Queen or Full Size Poster Bed

\$1799 Value
Sale Price
\$1399

Regular \$239.95
Night Stand
Specially Priced
at \$159.99 with
above set.

Tops, drawer fronts and ends are solid, not veneers. Even the backs, drawer bottoms and dust proofing are genuine wood. Traditional cherry finish and heirloom design. Heavy plate glass mirrors and distinctive pulls. Solid quality throughout. Open stock availability.

Prices include delivery and set up in your home

Schrader's

HOME FURNISHINGS

Serving the Area
from the same
location
"Since 1907"

Finest Quality
Grand Rapids
Bedding
at Special Prices
with purchase

"Family owned & operated since 1907"

111 N. Center St. (Sheldon Road) 349-1838 Mon., Tues., Sat. 9 to 6; Thurs. & Fri. 9 to 9; Closed Wed.

Everything you need is available at **PLYMOUTH TOWNE APARTMENTS**

Enjoy healthy independence in this beautiful new complex
One and two bedroom apartments for Senior Citizens including

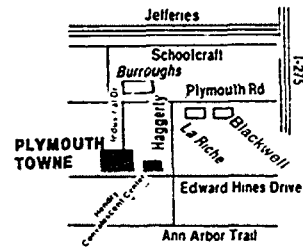
- Transportation
- Optional social activities
- Emergency security
- Two meals
- Housekeeping services
- Linens

OPEN 12-5 DAILY OR BY APPOINTMENT

Now taking Reservations
Call or Visit

The Plymouth TOWNE APARTMENTS

107 Haggerty Road
Plymouth, MI 48170
(313) 459-3890



Parson to Person...

The Rejected Stone

Dr. James Luther

An old legend from the time of the construction of Solomon's Temple concerns an odd shaped stone sent from the quarries for the building. Since no place could be found for it, they cast it into a valley full of debris. As construction neared completion, word was sent to the quarry foreman to send the corner stone to complete the building for the coming dedication ceremony. When informed it had been sent weeks before, they realized their mistake and laboriously retrieved the stone to place it as the chief ornamentation of the temple.

I do not know if there is truth in the story, but it does illustrate Luke 20:17: "The stone which the builders rejected, the same is become the head of the corner." The Lord Jesus Christ has the chief place in the plan of the ages.

Yet, the world seeks human concord and perfect civilization without Him. Since He has been rejected, the house of civilization will continue to be incomplete. He was rejected and nailed to a cross. Yet, He rose from the grave and now occupies the chief place of worship in heaven. Soon He will return. Until then, what place does He have in your heart?

First Baptist Church of Northville

217 N. Wing • Northville
348-1020



IF YOU'RE BROAD-SHOULDERED AND NARROW-WAISTED...

You'll look great in

THE ATHLETE'S SUIT

A Special Design & cut by Botony 500, Palm Beach, and Kingsridge

Sizes 38 to 50 Long From \$185

Custom Fitted in Lapham's
Own Tailoring Shop

Lapham's

120 E. Main St.
Northville

349-3677

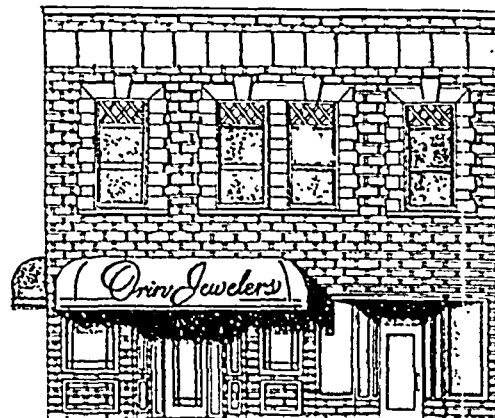
Mon-Sat 9-6 Thurs & Fri 11-9 p.m.



GRAND OPENING

Orin Jewelers INC

IS PROUD TO ANNOUNCE
THE OPENING OF OUR SECOND STORE
101 EAST MAIN STREET - NORTHVILLE



Grand Opening Specials
and Events
at Both Our Garden City
and Northville Stores

Now thru August 13
Open Daily 10 until 6 Thurs. & Fri. 10 until 9

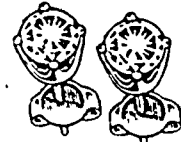


Diamond Pendant Special

All Fine Quality Diamonds

1/2 Ct. Diamond Pendant
Grand Opening Special
Reg. \$1195 **\$799**

1/4 Ct. Diamond Pendant
Grand Opening Special
Reg. \$395 **\$289**



Diamond Earring Special

All Fine Quality Diamonds

1/2 Ct. Total Weight
Grand Opening Special
Reg. \$769.95 **\$549**

1/4 Ct. Total Weight
Grand Opening Special
Reg. \$309.95 **\$239**



select an elegant new setting for her diamond or other precious stone.

Up to 5 stones set free up to 1 ct....Make your Old Diamonds Look Like New!

Fashionable Gold Nuggets

Starting at \$29.95

Have your old gold melted down into a fashionable custom made nugget pendant

Grand Opening Special **\$15.99**



GARDEN CITY
29317 Ford Rd. at Middlebelt
422-7030

NORTHVILLE
101 E. Main at Center St.
349-6940



Family Discount Drug



SHOP THE FAMILY WAY... DISCOUNTS EVERYDAY!

WE CARRY
COLD BEER
WINE & CHAMPAGNE

WE ARE A
PACKAGE
LIQUOR DEALER

Guardian Photofinishing

NOW: GET YOUR PICTURES OVERNIGHT
7 DAYS A WEEK - OR DOUBLE YOUR MONEY BACK!



REVLON
AQUAMARINE

TWO PACK
15 oz. SHAMPOO
15 oz. CONDITIONER
\$1.55



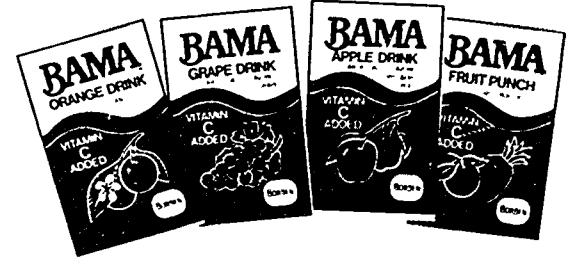
GERMACK
IMPORTED JUMBO FRESH ROASTED
PISTACHIO NUTS

5 lb. • NATURAL
BAG • RED
\$16.88



SANDERS
FAMOUS MILK CHOCOLATE
FUDGE TOPPING

20 oz. JAR
• Milk Chocolate
• Swiss Chocolate
• Bittersweet
\$2.33



BORDENS
BAMA FRUIT
DRINKS
VITAMIN C ADDED

8.5 oz. • APPLE
BOX • ORANGE
• GRAPE
• FRUIT PUNCH
3/55¢



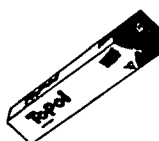
VITA SLIM
DIET FORMULA 15 CAPS **2.88**
30 CAPS **4.88**
UNICAP PLUS
11 VITAMINS PLUS IRON 120 TABS **5.22**
90 TABS + 30 FREE



SOMINEX 16's **2.09**
FORMULA 2 72's **4.99**



BANTRON
SMOKING DETERRENT
TABLETS 36 TABS **5.55**
HELPS YOU STOP SMOKING • HELPS CURB NICOTINE URGE



TOPOL
SMOKERS
TOOTH POLISH 7 oz. **3.66**
REMOVE UGLY YELLOW • MINT OR FLOURIDE



AIDS
APPETITE SUPPRESSANT
CANDY 12's **1.44**
LOSE WEIGHT DELICIOUSLY



Q-TIPS
COTTON SWABS 300 ct. **1.59**

CO-PAYMENT PRESCRIPTIONS

REGULAR \$2.00
97¢ | REGULAR \$3.00
1.97

EVERYDAY LOW DISCOUNT PRICES



CALADRYL
ITCH RELIEF 6 oz. **2.77**

CUTTER
INSECT REPELLENT **1.99**
• ¼ oz. STICK • 1 oz. CREAM • 1 oz. LOTION

"GEE YOUR HAIR SMELLS TERRIFIC"
FRAGRANT SHAMPOO 12 oz. **1.77**

JERGENS LOTION
DECORATIVE BOTTLE 15 oz. **2.19**
• REGULAR • EX DRY

30% DISCOUNT
Maybelline
Cosmetics
EVERYDAY LOW DISCOUNT PRICES

FOR RELIEF OF DIARRHEA
KAOPECTATE 8 oz. **1.77**
FLEET RELIEF ANTISEPTIC
HEMORRHOIDAL
OINTMENT 1 oz. tube **1.66**
BAUSCH & LOMB
SALINE SOLUTION 8 oz. **1.99**
SUMMERS EVE
MEDICATED DOUCHE
READY TO USE DISPOSABLE... TWIN PACK **1.59**

20% DISCOUNT
MAX FACTOR & REVLON
Cosmetics and Fragrances
EVERYDAY LOW DISCOUNT PRICES

KURLASH
EYE LASH CURLER **1.77**
CALGON MOISTURIZING
FOAM BATH 7 oz. **1.66**
AQUA FRESH
TOOTHPASTE 30¢ off 6.4 oz. **1.33**

30% DISCOUNT
GENERAL ELECTRIC
LIGHT BULBS
EVERYDAY LOW DISCOUNT PRICES

FAST ACTING
VIVARIN 16's **1.33**
STIMULANT TABLET 40's **2.66**

40% DISCOUNT
FORGET ME NOT
American Greeting Cards
EVERYDAY LOW DISCOUNT PRICES

DOAN'S
ANALGESIC PILLS 24's **1.99**
CUTICURA
MEDICATED
SOAP 5 oz. ECONOMY SIZE **1.88**
FOR SKIN THAT'S PART OILY AND PART DRY

50% DISCOUNT
DESIGNER INSPIRED
SUNGLASSES
By **OPTI-RAY**
EVERYDAY
LOW DISCOUNT PRICES

OGILVIE PROFESSIONAL TYPE
PERMANENTS KIT **2.99**
RAVE
SOFT HAIR
SPRAY 8 oz. AEROSOL **1.66**
• REGULAR • UNSCENTED • EX HOLD

20% DISCOUNT
L'EGGS & NO NONSENSE
PANTY HOSE
EVERYDAY LOW DISCOUNT PRICES

30% DISCOUNT
COVER GIRL
MAKE-UP
EVERYDAY LOW DISCOUNT PRICES

JERGENS • NATURE SCENTS
• GENTLE TOUCH
BATH BEADS YOUR CHOICE 15 oz. BOX **1.33**
JERGENS ALOE & LANOLIN
SKIN CONDITIONING LOTION 18 oz. **2.77**
COLGATE DELUXE TWIN ACTION
TOOTHBRUSHES **44¢**

50% DISCOUNT
Goody
HAIR ACCESSORIES
EVERYDAY LOW DISCOUNT PRICES

COLGATE
TOOTHPASTE REG. 7 oz.
GEL 6.4 oz. **1.39**
25¢ OFF

SHOP THE FAMILY WAY DISCOUNTS EVERYDAY

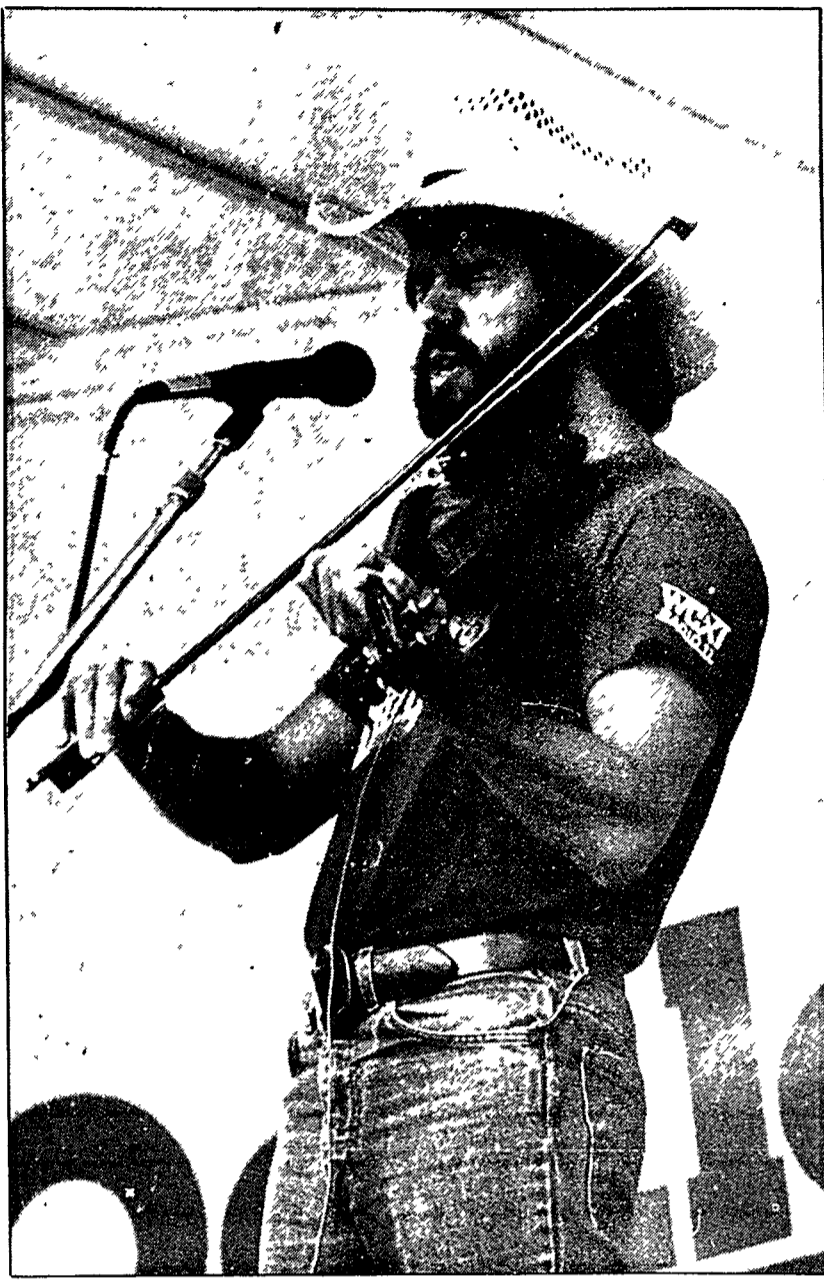
SHELDON & ANN ARBOR ROAD - PLYMOUTH

OPEN DAILY 9 A.M. TO 10 P.M. SUNDAY 10 A.M. TO 6 P.M.

Sun-drenched folk festival helps Huntington's cause



Last weekend's folk festival featured a wide array of musical styles rooted in folk traditions, with each of the eighteen acts showcasing a highly individual approach. Above, Tom Carty on guitar and Alan Zee on dulcimer opened the festival with sea chanties and Irish tunes. Known as "Terra Firma," the duo is best known for performing the "Michigan Outdoors" television show theme. Right, Gary Ritter pleased the crowd with his vocal and fiddling licks in a solo performance. Below, the trio "Phoenix" mixed interesting original songs with their arrangements of popular contemporary folk-rock numbers. Record photos by B.J. Martin.



Fiddlers, pickers and singers volunteer talents in fund-raising to fight Huntington's Disease

An estimated 1,000 people attended the folk and bluegrass festival last weekend, enjoying "good weather, good music and a good time," according to organizer Tom Rice.

Rice, owner of the Gittfiddler Music Shop, said the turnout was "decent, about the same as last year."

The music festival ran for eight hours both Saturday and Sunday and raised approximately \$3,000 for the Huntington's Disease Foundation after

covering its costs, Rice said.

Performances of note occurred throughout the event, with the early afternoon Saturday crowd responding to fiddler Gary Ritter and Sunday evening's audience treated to Peter "Mad Cat" Ruth's talents.

In between, the festival benefited from the clear, warm weather that encouraged picnickers to spend a few hours on the grounds of Ford Field, enjoying a variety of musicians on stage.

**FARMINGTON SQUARE
MONTESSORI
OPEN HOUSE**

Sunday, Aug. 21 2-4 p.m.
Thursday, Aug. 25 7-9 p.m.
Pre-School and Kindergarten
Ages 2½-6 years

School Hours 7:30 a.m. to 5:30 p.m.
33424 Oakland Ave.
(in the Salem United Church of Christ)
DOWNTOWN FARMINGTON

Call for information
CERTIFIED TEACHERS

Sherry Bass 477-8481 Shari Paxton 474-1227

**Why Pre-Plan
Your Funeral Now?**

Here's Why—

FREEZE FUNERAL COSTS FOREVER
Funeral charges are frozen at TODAY'S PRICES. Protect against tomorrow's higher prices.

SAVE—AS YOU SPECIFY
Guard against over-spending. Specify only what you wish to spend.

GET PEACE-OF-MIND
You don't have to pre-plan your funeral—but it's a good feeling knowing it's done and your family won't have to worry.

WILL HARRY & FUNERAL HOMES
REDFORD 25450 Plymouth 48239
LIVONIA 37000 Six Mile Road 48152

James H. Will 937-3670

Send for **FREE Booklet**

We want to know more about your **INFLATION-PROTECTED FUNERAL PRE-PLAN**

Name _____
Address _____
City _____ Phone _____



Indoor Tennis

PRE-SEASON MEMBERSHIP SPECIAL!

\$59.00 per person

JOIN NOW
MEMBERSHIP
WON'T EXPIRE
UNTIL SEPT. 1, 1984

PERMANENT COURT TIME • PRIVATE LESSONS
ORGANIZED PRACTICE • CLINICS
JUNIOR EXCELLENCE PROGRAM

**BETTER HURRY!
LIMITED NUMBER OF MEMBERSHIPS
AVAILABLE AT THIS LOW PRICE**

LIVONIA ATHLETIC CLUB
17250 NEWBURGH RD.
AT SIX MILE
LIVONIA
591-0123

Turtles subject of park lecture

"Turtle," a free 1½-hour family program on the natural history of Michigan turtles, will be held at 2 p.m. Saturday, August 20, in the Nature Center of Kensington Metropark near Milford. Advance registration and a vehicle entry permit are required. For further information or to register, phone 685-1561.

THE TONQUISH CREEK YACHT RACE



SHIPWRECK SIDEWALK SALES

Saturday, August 13, 1983 4:00 P.M.
Kellogg Park

- Fisherman's Wharf—Good things to eat! Saturday 4-9:30 p.m. on Penniman Avenue in The Gathering.
- Shipwreck Sidewalk Sales Friday 9 a.m.-9 p.m. Saturday 9 a.m.-6 p.m. in stores throughout Plymouth.
- Street Dance on the race course Saturday at 6 p.m. featuring Dave Swain and his 521 Orchestra. FREE!
- Moonlight Cruise on the Boblo Boat Saturday Call the Plymouth Chamber of Commerce at 453-1540 for reservations. \$8.50 includes cruise and round trip passage on Plymouth's Double Decker Bus. Bus leaves at 9 p.m. from The Gathering.
- Awards for Creative Rigging, Best Float, Best Costumes, Race Winner, Race Loser, Most Preppy Team, Best Cheerleaders.

Don't Miss It!

FOR MORE INFORMATION, CONTACT THE PLYMOUTH CHAMBER OF COMMERCE AT 453-1540

Age 30 to 60?
You may save big money on your auto insurance

Married or single, qualified men and women may save plenty on car insurance with Farmers exclusive 30/60 Auto Package

Why not check with Farmers today!

Jim Storm
43320 W. 7 Mile
(across from Little Caesar's)
Northville
349-6810

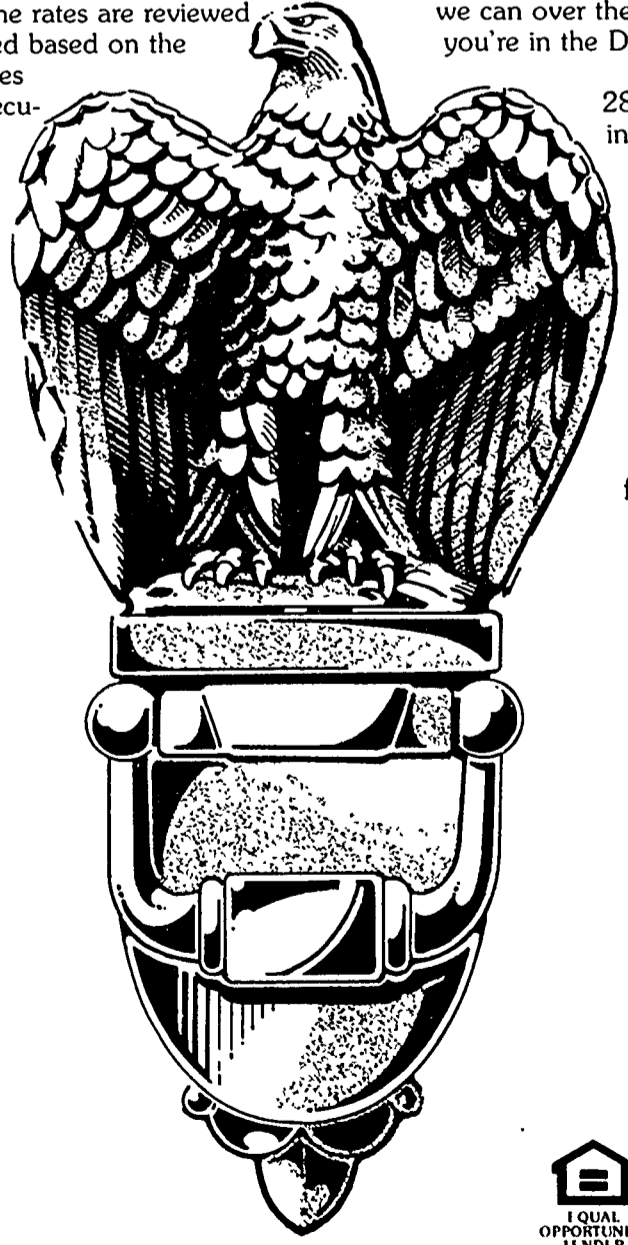
FARMERS INSURANCE GROUP
Equal Opportunity Lender

Knock on the door to a 13% home mortgage.

Now, a lower interest rate that can help you open the door to your next new home. Our new Adjustable Mortgage Loan starts you out with a helpful 13% rate from Down River Federal Savings — a rate that's guaranteed for five years before payment review. (13.75% APR) Funds are guaranteed for the life of the mortgage up to 30 years. Every five years the rates are reviewed and changed based on the United States Treasury Securities with a constant maturity of five years as set by

the Federal Reserve Board.

If you're ready to open the door to that new home, this can be the mortgage to help you open it. Why not talk it over with one of our knowledgeable Home Mortgage Counselors at any one of 24 neighborhood offices. Come on in, or call one of the following numbers — we'll give you all the information you can over the phone. If you're in the Down River area, call: 285-1010 — in the North area, call: 477-9340 — and in Monroe: 243-6600.



We make it a little easier for you.



Big. But downright neighborly.
Down River Federal Savings
Member Federal Savings and Loan Insurance Corporation. Your Savings Insured to \$100,000

Automobile show, swap meet bring car lovers to Northville

While motored car collectors were gathering their Cadillacs, Duesenbergs and Packards on the lawn of Meadow Brook Hall last weekend, Northville was playing host to its own antique and special interest car show at the Downs.

While the featured cars here were less prestigious early Fords, Mercurys, Plymouths and Studebakers, their owners were no less proud of their vehicles and perhaps moreso, most of them having done the restoration work themselves in stolen hours spent on cold garage floors.

The show was geared to these dedicated car lovers, most of the Downs parking lot being given over to a swap meet where one might find chrome bits for a 1957 Ford or fenders for a '46 Hudson.

Sponsored by the Northville Antique

Car Club, the annual event drew hundreds of old car collectors from the region to hunt for parts and view the handiwork of the estimated 60 cars on display Sunday morning.

Visitors cast ballots for their favorites in 10 categories, including both unmodified and modified models. The latter were primarily "street rods" such as Wendell Proffitt's black chopped and channeled '51 Mercury that won the poll in the 1950-60 modified class.

Unmodified cars, such as the 1957 Ford Retractable that took top honors for owner Frank Johnson or the supercharged 1963 Studebaker Avanti that was voted best special interest entry, looked as though they had rolled off assembly lines only yesterday rather than 20 years ago or more.

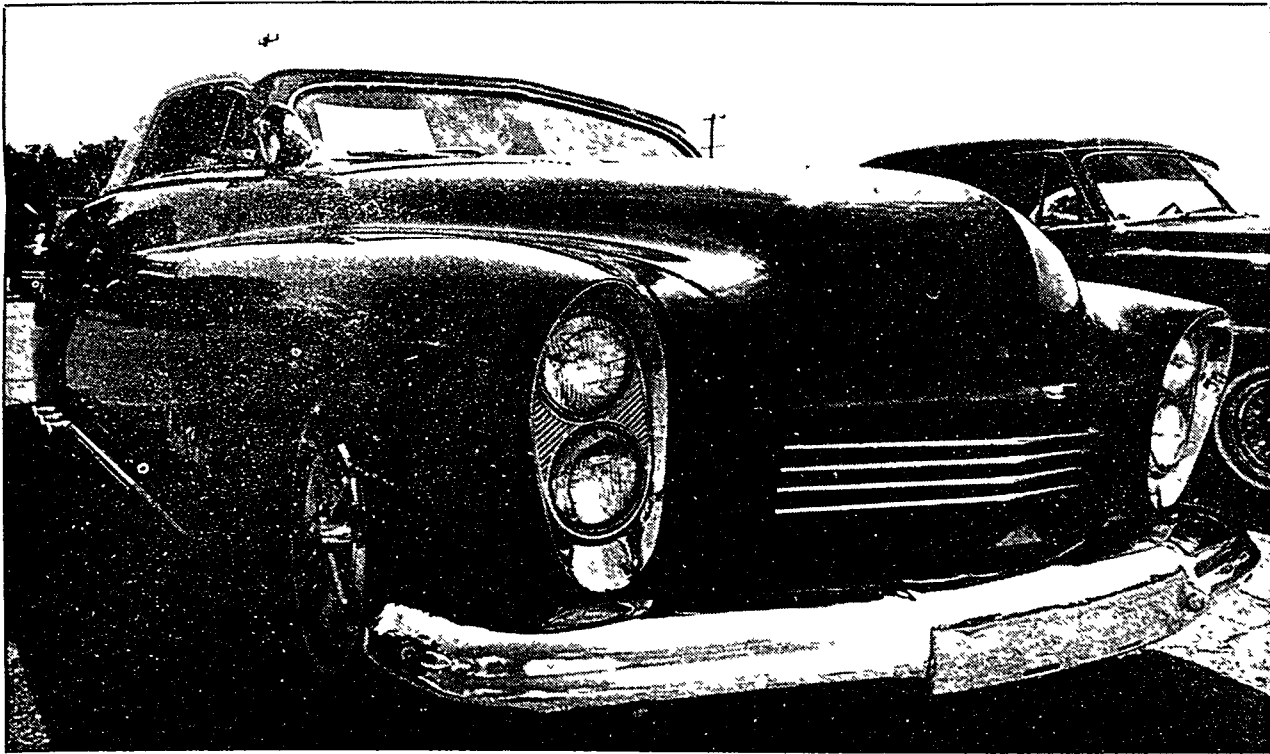


These three Fords — a 1932 street rod, an unmodified '32 and a 1928 Model A — each took an award

Photos and story by Kevin Wilson



1933 Plymouth bore this flying lady hood ornament



Mercury street rod prompts reflections on "The Good Times" of 1951 — won the modified class, 1950-60

Anne's Fabrics
A Special Fabric Store and Quilt Shoppe
111 E. Main, Northville

• Stenciling

NEW! Needlepoint

- Quilting
- Candlewick
- Cross-Stitch
- Applique
- Trapunto
- Kits & Patterns
- Teddy Bears,
- Dolls, Folk Animals
- Books
- Classes

Grand Opening
Now thru August 13
Open Daily 10 until 6 Thurs. & Fri. until 9

Orin Jewelers INC

select an elegant new setting for her diamond or other precious stone.

Up to 5 stones set free up to 1 ct....Makes your Old Diamonds Look Like New!

NORTHVILLE
101 E. Main at Center St.
349-6940

GARDEN CITY
29317 Ford Rd. at Middlebelt
422-7030

Pebble Creek Golf Club

Conditions-Lush!
THE FINEST MANICURED AND MAINTAINED COURSE

Taking 1984 League Reservations Morning & Afternoon

Corner of 10 Mile and Currie Rd. South Lyon 437-5411

Open the door to a 12¼% home mortgage.

Our lowest-interest Adjustable Mortgage Loan with annual payment review can mean that you can actually afford that special home you've been wanting. This long-awaited 12¼% rate with yearly review is guaranteed never to change by more than 1% each review — and increase no more than 5% for the term of the loan for as long as 30 years! (12.96% APR)

Our expert Home Mortgage Counselors can fill you in on the details, and get you on your way to home ownership, now.

There are 24 neighborly Down River Federal Savings Offices — and one of them is sure to be near you. Or call one of the following numbers to get more information. If you're in the Down River area, call 285-1010, in the North area, call 477-9340, or in the Monroe area, call 243-6600.

If you thought you couldn't afford that special home, knock on our door and find out more about our new 12¼% home mortgage. Come by today, or call — opportunity only knocks once.

We make it a little easier for you.

Big. But downright neighborly.

Down River Federal Savings

Member Federal Savings and Loan Insurance Corporation Your Savings Insured to \$100,000

ESLIC

Looking for an independent Agent?
One name says it best.

C. HAROLD BLOOM AGENCY
Over 38 Years Experience
188 W. Main Northville
349-1252

An agent who represents just one insurance company can't always provide the insurance that's best for you.

But your independent Auto-Owners agent represents several companies. So if one's insurance isn't right in price or coverage, he'll find another that is.

Your local Auto-Owners agent — no one does it better — or knows you better — than him.

Auto-Owners Insurance
Life, Home, Car, Business.
One name says it all.

Listen to the Auto-Owners John Doremus Radio Show.

HAIR STUDIO

HAIRCUTTERS BY APPOINTMENT

- Permanent Waving
- Hair Coloring
- Cellophanes
- Hennas

Exclusive Distributor of Collin Parnell Products and Lenel Parfums

Let our creative & innovative but realistic artists work with you, keeping your lifestyle in mind.

Get Ready for **BACK-TO-SCHOOL** with a little help.

For the month of August we are offering a **\$10 HAIRCUT** (Includes shampoo, conditioning, haircut, finish).

Please present this ad to participating artists Vic, Linda or Terri.

33487 SEVEN MILE WEST LIVONIA, MICHIGAN (313) 478-2424

save now... *Your* Ethan Allen Gallery semi-annual sale is now in progress.

the *Hearthside* LIVING ROOM

LIVONIA · SOUTHFIELD · UTICA

Save ends September 11

GREEN SHEET WANT ADS

348-3022

GREEN SHEET WANT ADS

348-3022

The essence of Mackinac right in downtown Plymouth

Mouth-watering fudge and old fashioned peanut brittle.

Made right in our shop for you to watch.



We Mail

13 Forest Place

459-1990

1933-1983
Walker & Buzenberg
Furniture Sales
50th Anniversary Sale

Everything we have in stock will be at least

1/3 OFF

Manufacturer's List Prices

Select fine furniture for the Living Room, Dining Room, Bedroom and Family Room.

Specials on Mattress Sets, Wall Entertainment Units, Tables, Lamps, Desks, Dinettes, Sofas, Love Seats, Chairs, Curo Cabinets, Sleep Sofas, Recliners and many other items.

Hurry! Celebrate with us and save.

SALE NOW IN PROGRESS

240 North Main Street • 459-1300
Plymouth

Just minutes away from I-275 & I-96

Next to Krogers

Hours: MON., THURS., FRI. 10-9 p.m. TUES., WED., SAT. 10-6 p.m.
Free Parking

We have the largest selection of curtains anywhere in the area! Bring your measurements and our friendly expert staff will help you.

Our curtains are

Country Style Curtains
Ruffled Curtains

Ruffled Curtains • Tab Curtains

• Door Panels • Fabrics by the yard
Chair Pads & more.

Everything to complete the Country Look!

Corner Curtain Shoppe, Inc.

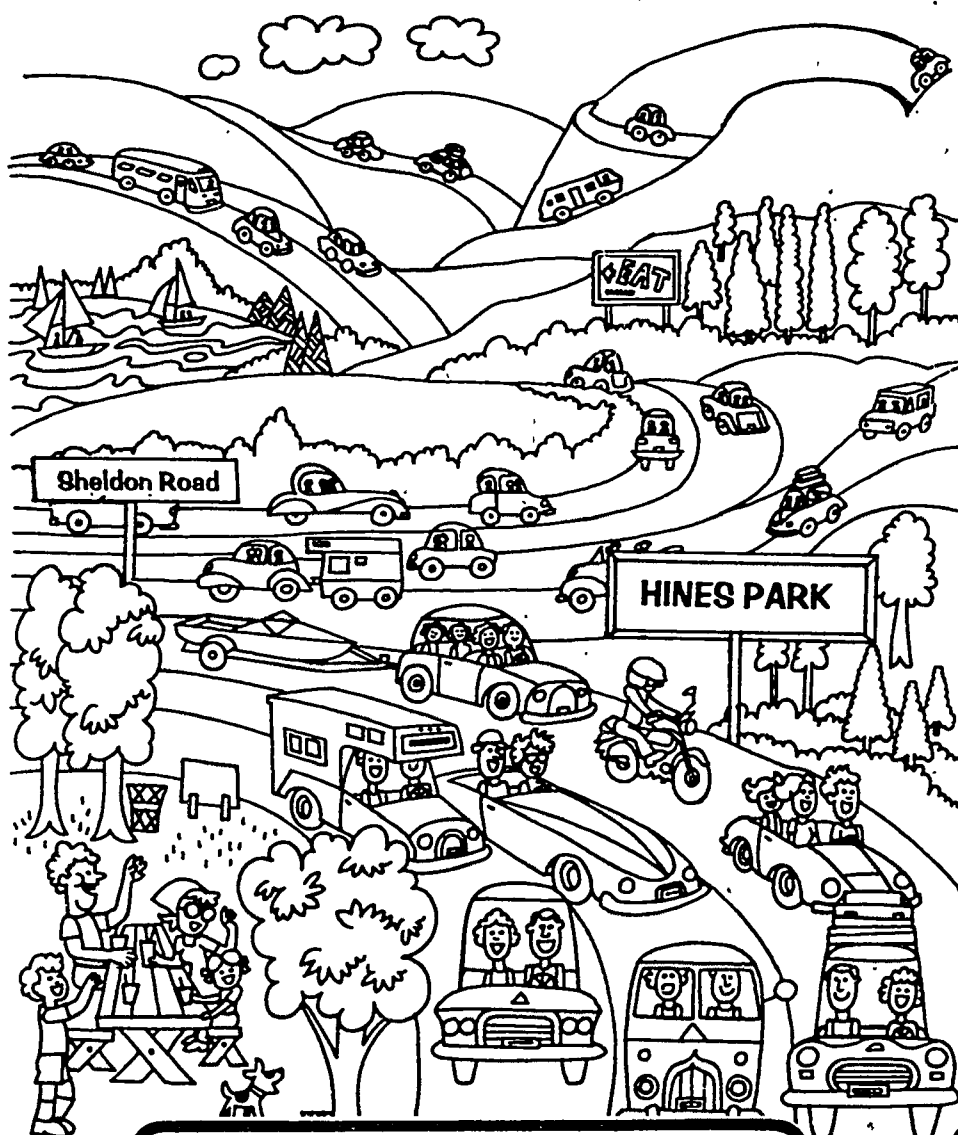
853 West Ann Arbor Trail
(next door to Mayflower Hotel)

Plymouth • 453-0640

Shoppe Hours: Mon-Sat 10-6, Fri 10-9

Welcome Northville...

(THE ROAD LEADS TO PLYMOUTH!)



Austin Reed
Hart, Schaffner and Marx
Christian Dior
Gant
Gordon and Hunt

Gentlemen's Clothing

John Smith
CLOTHING COMPANY

• now carrying boys' sizes from 14
• open evenings until 9:00

All By Hand

has changed hands.

The new fall yarns have started to arrive. So come in and see the new collection of European yarns & patterns.



All By Hand
12 Forest Place
Plymouth 455-4242

Jimmie's Joyn For Fun Dining!
GREAT SOUPS 'N SALADS
POPCORN
COLD BEER
COCKTAILS
FISH'N CHIPS

10 Foot TV-FREE PEANUTS IN BAR

JIMMIE'S JOYNT COUPON

August Special

SPARE RIB DINNER

Whole Slab Reg. \$9.95
Includes Potato and cole slaw
Only \$7.99
(DINING ROOM ONLY) Good thru 8-31-83

1492 Sheldon at Ann Arbor Road
Plymouth 453-1004

Daily 11-12 Sat 12-1 Sun. 3:30-10

TORO TRADE SALE

\$50-\$100
FOR YOUR OLD MOWER

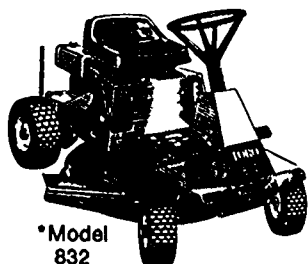
Don't buy a lawnmower from just anyone... Buy a TORO from SAXTON'S a dealer you can trust!

Model 20672
21" Self propelled
BBC Rear Bagger



FINANCING AVAILABLE

\$160*
INSTANT REBATE ON PURCHASE OF TORO RIDER



*Model 832

SAXTONS

GARDEN CENTER INCORPORATED
587 W. ANN ARBOR TRAIL, PLYMOUTH

Serving You Since 1928 • 453-6250

STREET DANCE FREE!
Saturday 8-13 6 p.m.

MONLIGHT CRUISE ON THE BOB-LO BOAT
Call Plymouth Chamber 453-1540

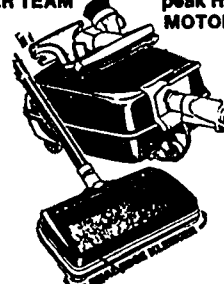
FISHERMAN'S WHARF
Saturday 8-13, 4-9:30 p.m.
The Gathering on Penniman Ave.

TONQUISH CREEK YACHT RACE
Sat. 8-13, 4 p.m.
Kellogg Park

SHIPWRECK SIDEWALK SALES
Friday 8-12 & Saturday 8-13

EUREKA Super Trade-In Sale

2-MOTOR POWER TEAM



REG. \$219.95
SALE \$167.97

LESS TRADE \$20.00
\$147.97

Eureka's Best ESP Self-Propelled w/trade



EUREKA ESP UPRIGHT 50% MORE POWER

Bright Headlight
Vibra-Groomer II beater bar brush roll gets deep down dirt
4 position Dial-A-Nap

REG. \$169.00
SALE \$138.00
Less Trade \$20.00
You Low Cost **\$119.00**

TOOLS 1/2 OFF W/ANY VACUUM PURCHASE

PLYMOUTH VACUUM AND SEWING CENTER

989 W. Ann Arbor Road • Plymouth
453-3500

Wednesday, August 10, 1983

Survey renders upbeat auto industry view

By TIM RICHARD

Auto manufacturers have a more enlightened approach to long-range market changes than their suppliers, according to one industry consultant.

"Manufacturers are planning to take more overt action than parts suppliers," said Peter Van Hull, director of the automotive industry management information consulting practice of Arthur Andersen & Company.

"Manufacturers are very serious about changes for the first time. Suppliers are not so sure. They are in a wait-and-see mode," said Van Hull.

Automakers more optimistic than are parts suppliers

Van Hull recently unveiled a survey of manufacturers and suppliers that generally was more upbeat about the U.S. auto industry's share of the market, prices and quality than 1979 and 1981 surveys. He said the industry expects even greater changes than past surveys indicated.

The new survey — called Delphi III after the ancient Greek oracle — is being sold by Arthur Andersen to industrial customers.

Van Hull tried to avoid criticism of suppliers' attitudes but repeatedly noted differences in their outlooks. Sample findings from the survey:

- Suppliers see less benefit to them from "just-in-time" delivery of parts to manufacturers, in which manufacturers stockpile no more than about one day's supply. Manufacturers predict a 12 percent potential reduction in the cost of a car by 1992 through "just-in-time" deliveries. But suppliers see the system as forcing them to be more competitive and a way for manufacturers to push inventory problems back on suppliers.

- "There is a general understanding of robotics and factory automation by vehicle manufacturers, but little understanding in supplier companies."

- Manufacturers see inventories turning over 20 times a year by 1992, but suppliers see only eight turnovers a year. A higher turnover reduces the amount of working capital tied up in supplies.

- Two-thirds of manufacturers identify improved strategic planning as their highest priority to improve their competitiveness.

The survey was based on lengthy forms sent to 105 manufacturing executives and 190 supplier executives, according to Van Hull's associate, Warren Watkins. That was double the number answering the 1981 survey and

"a good cross-section," he said.

Other findings from the survey:

- "U.S. passenger car volume is forecast to increase to 8.9 million units in 1983 to 10 million by 1985 and 10.5 million in 1990." Van Hull said these projections are down two million from the 1981 survey, indicating one note of pessimism.

- "General Motors' U.S. market share is forecast to remain roughly 45 percent for the next 10 years. Ford is expected to remain at approximately 16 percent and Chrysler's share is

Continued on 3

15TH Anniversary

Tent Sale

Oil & Filter Change
\$15⁰⁰
Most Cars & Trucks

Free Estimate On Body Repairs

\$3000,000.00
Inventory Of Used Cars & Trucks

10.9%
APR Interest
On
Ranger Pickups

Used Cars
As Low As
\$150

Headlight Adjustment
15^c
Ea.

Front End Alignment
\$15
Most Cars

Coolant System Check
15^c

Rotate Tires
15^c Ea.

11.50%
APR Interest
On All New
Cars—Trucks

Chasis Lube
Cars & Pick-ups
15^c

200
New Cars
And Trucks
In Stock

Paint Touch Up
15^c

AUGUST 10th

TILL

AUGUST 31st

9.9% A.P.R. OR \$415⁰⁰
Ford Rebate On
T. Birds, Mustangs, Cougars, Capris
Includes A, X & Z Ford Plans

ALL NEW & USED CAR & TRUCK SALE PRICES

[Marked On Windshields]

We Want To Thank The People Of Livingston County For 15 Prosperous Years
We Have Sold Over 15,000 Cars and Trucks In The Last 15 Years

HILLTOP FORD, LINCOLN & MERCURY INC.

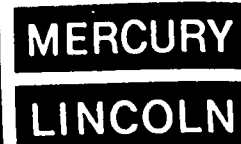
Michigan's Largest Ford, Lincoln, Mercury Dealer

HOWELL

Open
Thurs. & Fri.
Til 9:00 p.m.

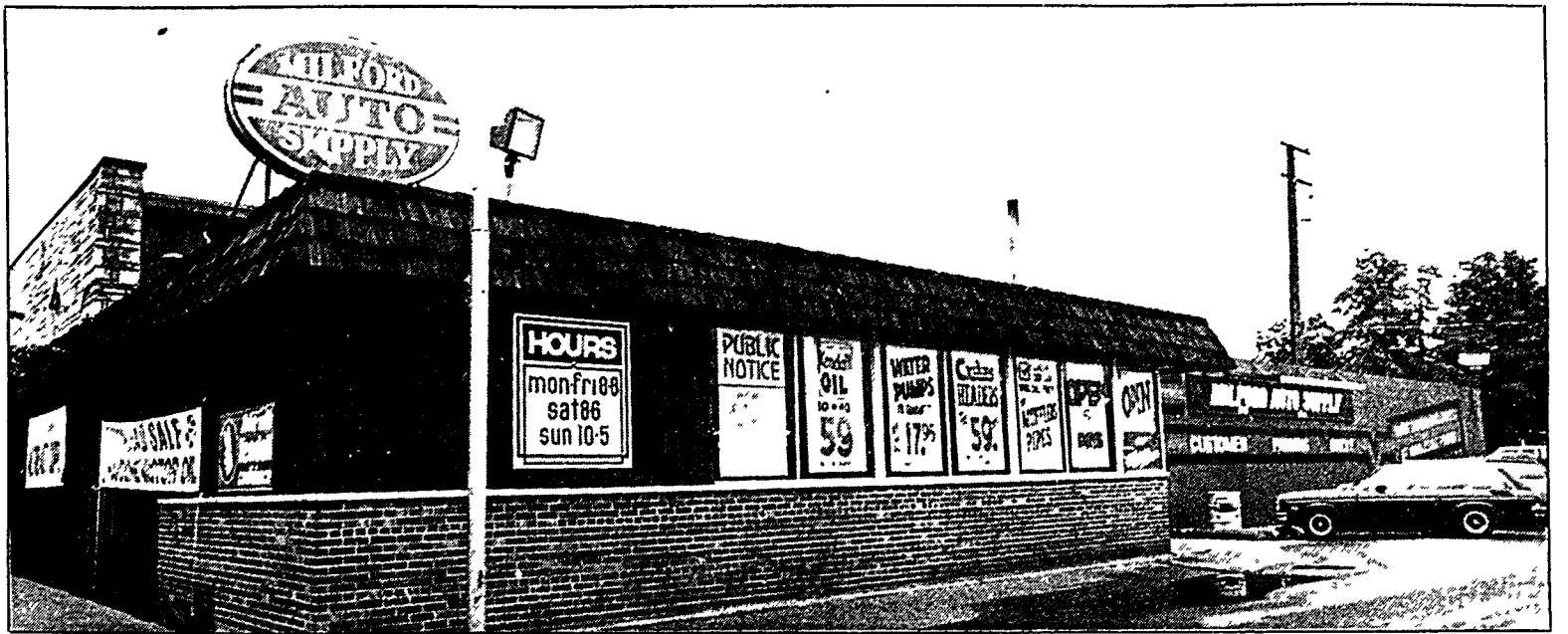
At the Top of the Hill
Since 1968

546-2250





Milford Auto's Dave Clevinger, police chief Ron Averill draw winner



New quarters enable Milford Auto to expand inventory, add employees and increase sales volume

Move across road enhances business

By DICDOUMANIAN

Milford Auto Supply's new location is not too far from the old one. The store moved from 353 North Main Street to 334 North Main Street—across Main Street.

"We made the move to secure our future," stated owner Charles Hutton. "The large auto parts store is the way this business is headed right now."

Milford Auto Supply is a retail and whole sale dealer.

The new store is over twice as big as the old one. It features Gates, Monroe, Moog, AP Exhausts and foreign car parts. Hutton explained that the people who work in the store have over 40

years experience in the auto repair business.

Hutton added that two big reasons Milford Auto Supply moved was to be able to display more products and have a larger inventory.

"We wanted to give the service and coverage that people who work on their own car need today," Hutton said. "What we have today is a lot of people working on their own car. They are able to walk into the store, see the items on the shelf, and see what it is they need."

"Our personnel has the experience and the expertise to help the average car owner with minor and major repair problems," he added. Along with moving, Milford Auto Supply added four

new members to its staff.

According to Hutton, moving across the street is no easy task.

He explained that for two months leading up to the big day, items were moved across the street. If something had been moved, and a customer was looking for that item, someone had to make a quick trip across the street.

Then on moving day, after the store closed at 5 p.m. on Sunday, everything that was left at the old location was moved across the street.

"We finished up at about 6 a.m. Monday, and opened at 8," Hutton continued, "we resumed business in a somewhat orderly fashion."

The new store will also give Milford Auto Supply an opportunity to increase its sales volume, keep prices competitive and increase its inventory, according to Hutton.

"We will match, meet or beat anyone else's price," stated Hutton.

"We want people to know we appreciate their support," said Hutton. "If you don't have support from local residents, you can't make it."

To show off the new store and to show his appreciation, Hutton and Milford Auto Supply held a three-day Grand Opening.

There were 1,000 instant door prizes. Each winner's name was then entered into the grand drawing for six prizes. The prizes included the grand prize—a three and one-half horsepower engine duplicate of a dragster—and five other prizes.

So after 15 years, Milford Auto Supply has a new location.

"I can't express how much it means to us, the support the people in this area have given us," said Hutton.

Milford Auto Supply is open seven days a week: Monday through Friday, 8 a.m. to 8 p.m.; Saturday, 8 a.m. to 6 p.m.; Sunday 10 a.m. to 5 p.m.

Realtors charge deficits raise home costs

Recent increases in mortgage interest rates slowed the recovery pace of the existing home market in July, according to Metro MLS, multi-listing arm of the Western Wayne Oakland County Board of Realtors.

Metro MLS members reported 995 home sales in July, up 31.5 percent over one year ago, but down nearly 20 percent from the 1,238 sales reported in June.

For the first six months of this year, members recorded a 64.6 percent sales gain over the first half of 1982.

"Our greatest fear for home buyers and sellers is that mortgage interest rates may continue upward," said Metro MLS President Thomas A. Duke, Jr. "The threat stems from the federal government's inability to lower pending budget deficits. Realtors nationwide are now mounting an intensive

grassroots campaign which will push for immediate action to solve the budget deficit crisis and relieve the upward pressure on interest rates."

Duke said even a one percent jump in interest rates has an immediate affect both for the individual home buyer and overall economic recovery.

"Someone buying a home with a \$50,000, 30-year mortgage will discover the one percent interest increase is nearly equivalent annually to an added month's payment of principal and interest," he said. "It pushes housing costs up about \$500 per year, and increases total payout over the life of the mortgage by nearly \$15,000."

"Economists estimate that a one percent increase in mortgage interest eliminates 433,000 potential buyers, with yearly sales of existing homes dropping by 274,000 units and new homes by 159,000. This 11 percent decline in the home starts and resales means an \$18.8 million drop in spending and the loss of 377,000 jobs."

Duke credited an aggressive grassroots campaign conducted by Realtors last year with helping hold down 1983 budget deficits and paving

the way for housing gains to lead the beginning of the national economic recovery.

"This year we are urging adoption of a program we call 'three-for-all' which advocates adoption of measures already introduced in Congress," he said.

"These would limit the growth of entitlement programs and set indexing of personal income taxes for inflation at three percent less than the Consumer Price Index. In addition, we are calling for a freeze on the growth of discretionary spending for domestic programs."

Budget deficits appear likely to remain close to \$200 billion annually over the next several years unless action is taken now, Duke said. Financing deficits of this magnitude would leave little room for the credit needed to support growth in the private economy which is a must if recovery is to go forward, he added.

Duke said adoption of the Realtor program could achieve a balanced budget in five years and end the repetitive cycle of tight money and high interest rates.

Industry survey shows upbeat trend in autos

Continued from 1

forecast to be 10 percent.

"Ignoring inflation and raw material cost, a 2-4 percent annual cost reduction potential can be achieved by suppliers through quality and productivity improvement." Nevertheless, "most suppliers forecast price increases of three percent a year for parts they sell to manufacturers."

Fuel prices are expected to increase to \$1.75 per gallon for unleaded by 1990. Suppliers generally predicted prices five cents a gallon lower than did manufacturers.

In addition, 82 percent of the respondents forecast another energy crisis between 1987 and 1992—a finding

Van Hull said was a gut feeling more than a factually-based prediction.

Fuel economy will continue to increase. Respondent predicted 35 miles per gallon for passenger cars by 1992 and 27 mpg for light trucks. These generally were lower than earlier surveys, Van Hull noted.

A brighter future for large cars was forecast—15 percent of the 1990 market in the 1983 survey versus only 10 percent in the 1981 survey.

Average life of new cars is expected to increase from eight years for 1981 models to 10 years for 1990 models.

Prices for U.S. produced passenger cars are forecast to increase three percent a year through 1992.

SHRUBS 'n STUFF, INC.
Complete Landscape and Design Service
Japanese Gardens • Rock Gardens
Patios • Decks • Retaining Walls
Planting • Pruning • Perennials
Michael Anusbigan
Bachelor of Science, M.S.U.
Urban Forestry
437-2792/348-4356
Visa & Mastercard accepted

CASH FOR LAND CONTRACTS & REAL ESTATE LOANS
Any type property anywhere in Michigan 24 Hours Call Free 1-800-292-1550 First National Accept. Co.

COMPLETE CAR CLEANUP
• Interior & Exterior
• Polish & Wax
• Shampoo
• Steam Cleaning
• Rustproofing
South Lyon Collision
150 E. McHattie
South Lyon 437-6100

FEET HURT?
DON'T WALK IN PAIN - MOST FOOT PROBLEMS CAN BE CORRECTED IN OUR OFFICE
• Ingrown Toenails • Bunions
• Corns/Callouses • Adult & Children's Foot Problems
• Fractures & Sprains • Office & Hospital Surgery
• Warts (hands & feet) • Heel & Arch Pain
FOOT SPECIALISTS • FOOT SURGEONS
DR. H. LEFKOWITZ MOST MAJOR INSURANCE PLANS ACCEPTED
DR. I. STEINER PODIATRISTS
1183 S. Milford Rd., Highland, Lakeview Plaza
887-5800

DON'T BE FOOLED!
There is a Difference in Treated Wood. And ALL SEASONS WOOD makes the lasting difference...with quality. Get your money's worth!
ALL SEASONS WOOD™
New Hudson Lumber
56602 Grand River.
New Hudson 437-1423

Since 1947
Michigan Aluminum Products Co.
WE BEAT ANY PRICE ANYWHERE ANYTHING IN GLASS OR ALUMINUM
EXPERTS IN SPECIALIZED ALUMINUM BUILDING PRODUCTS AND INSTALLATIONS
• STORM WINDOWS • DOORS & DOORWAYS
• PORCH OR ROOM ENCLOSURES & ADDITIONS
• THERMAL WINDOWS & DOOR REPLACEMENTS
• SECURITY DOORS & WINDOW GUARDS
• TRAPP DOORS • SHUNGS
• SPOING TRIM & GUTTERS • CABLE ON THE ROOFS
255-0063
22915 GRAND RIVER AT TELEGRAPH
Deal Direct & Save
Free Courteous Estimates
BREAK-IN PROTECTION
NATIONWIDE SECURITY PRODUCTS
CALL FOR FREE ESTIMATES.
273-2224
16520 TELEGRAPH AT GRAND RIVER 538-5527

MICHIGAN HOME IMPROVEMENT
Corner of Telegraph & Grand River
Same Location Since 1927
For Your Best Buy and Workmanship in Home Improvement
— CALL —
MICHIGAN ALUMINUM 255-0063 or 64
And For ALL Security Needs
— CALL —
NATIONWIDE SECURITY 273-2224
STEEL REINFORCEMENT DOORS
SECURITY STORM DOORS From \$249
STEEL REPLACEMENT WINDOWS
2" Steel Frame
CALL WITH A COMPANY YOU CAN TRUST FOR YOUR SECURITY NEED

Slide on down! Come enjoy water like you never have before at Southeast Michigan's newest summer adventure. Michigan Waterworld Attractions include two giant water slides, miniature golf, video games, a refreshment plaza, and much more. And there is no admission fee. Michigan Waterworld is just two miles east of Kent Lake, so add us to your list of summer activities in the Kensington Metropark area. Located at I-96 and the New Hudson/Milford exit. For more information phone (313) 437-7550. **GROUP RATES AVAILABLE**

MICHIGAN WATERWORLD

THIS COUPON GOOD FOR
50¢ OFF*
WATERSLIDE WEEKDAY RATES
Coupon expires 8/24/83 Limit one per family

THIS COUPON GOOD FOR
25¢ OFF*
18-HOLE MINIATURE GOLF RATES
Coupon expires 8/24/83 Limit one per family

Well, HAT'S HAPPENING
the Final Clearance Sale of Summer Fashions is on...
And It's At
Beverly's
CASUALS
Men's & Women's Apparel
PROSPECT HILL SHOPPING CT:
600 Highland Ave.
Milford
684-6500
DOWNTOWN BRIGHTON
140 W. Main St.
Brighton
227-6144
The way I look at it with **40% to 50% Off*** the original prices, if I buy 2 items one would be practically FREE
"Hant Ten" and "Op" are in!
*Doesn't apply to prior sales or layaways
VISA
MasterCard

Buying in Livingston County Saves Dollars and Makes Sense!

The Livingston County Auto Dealer's Association has over 2000 new & used cars & trucks to choose from

ALL NEW
'83 Cars & Trucks
In Stock
5 Year Financing
 13.0 A.P.R.
5/50 Warranty + **Factory Rebate**
On Select Units

John Colone
 Chrysler, Plymouth, Dodge, Inc.
 145 E. Main, Pinckney
878-6086
 OR
878-3151
 Open Sales & Service
 8 to 8 Mon. to Fri.



CARY UNDERWOOD Chevrolet

"USED CAR BUYS"

- 1982 Caprice 4 Dr. Loaded **\$8995**
- 1982 Cavalier Wagon ... 4 Speed **\$5695**
- 1982 S-10 Pick-Up. ... 4 speed, 4 cylinder **\$5995**
- 1981 Century Wagon **\$6495**
- 1980 Scout 4X4 20,000 miles **\$4995**
- 1980 Olds Cutlass 2 Dr. **\$5995**
- 1980 Buick Regal 2 Dr. V-6, auto., air **\$4995**
- 1979 Chev. Suburban Air, trailer, towing special **\$5995**
- 1979 Ford Econline Van. **\$3495**

Transportation Special
From \$499 to \$1499

CARY UNDERWOOD Chevrolet

229-8800

603 W. Grand River—Downtown Brighton 229-8800
 Mon. & Thurs. till 9 p.m.; Tues., Wed. & Fri. till 6;

Livingston County's No. 1 Cadillac Dealer

We Buy Cars For Cash

1982 BUICK REGAL Low miles, must see U173P	1981 CADILLAC SEDAN DeVILLE Loaded U169P	1982 FORD PICK UP Mint U186A	1979 CUTLASS SUPREME Sharp U196A	'81 SEVILLE Sharp, loaded, 1 owner U277A	1981 CUTLASS Nice Car U155P
1981 CHEV. MONTE CARLO Sharp U224P	'79 98 REGENCY Must See U269A	Transportation Special '77 SUBURBAN 11250 This Week Only U237A	1980 FORD CAMPER 4x4, loaded, sharp U220A	1982 BUICK SKYLARK Nice U257A	'82 BUICK RIVERIA Low miles, mint cond. U276A



SUPERIOR
OLDS-CADILLAC-GMC
 8282 W. Grand River
 Brighton — 227-1100

MON.-THUR.
 TIL 9 P.M.

Livingston Counties No. 1 GMC Dealer

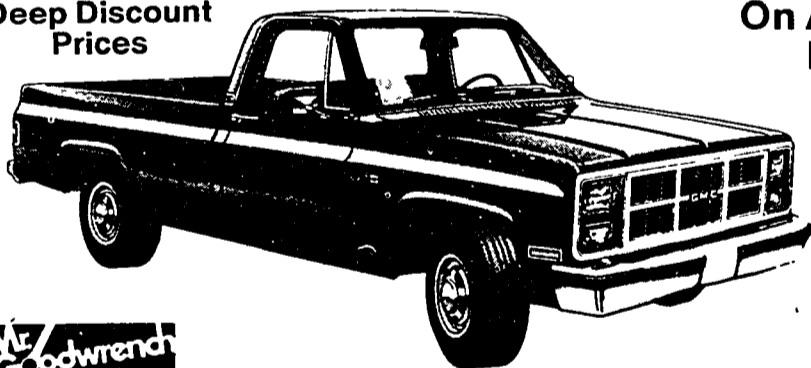
In Stock
 Ready to Deliver

Clearance Sale

Many to
 Choose From

Deep Discount
 Prices

On All Pickup's
 In Stock



No. 573
 1983 1/2 Ton
 6 cyl., 3 speed,
 p.s., & p.b.,
 radio
\$7395



SUPERIOR
OLDS-CADILLAC-GMC
 8282 W. Grand River
 Brighton — 227-1100

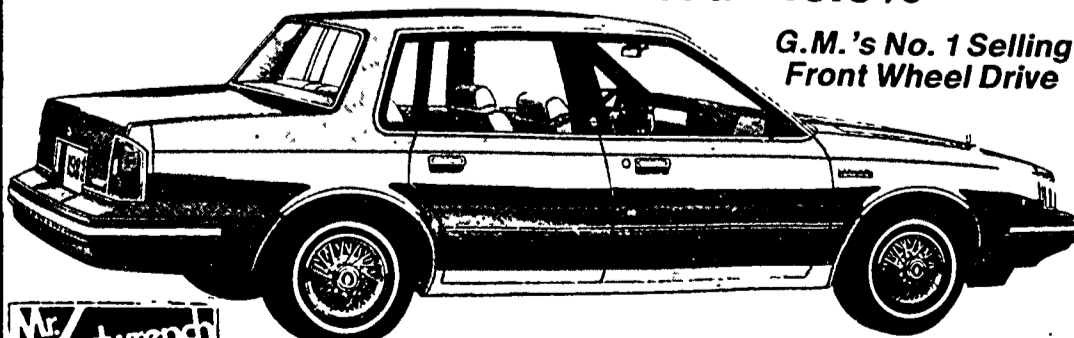
MON.-THUR.
 TIL 9 P.M.

Livingston County's No. 1 Olds-Cadillac Dealer

Cutlass Ciera

For Those Who Waited - 10.9%

G.M.'s No. 1 Selling
 Front Wheel Drive



SUPERIOR
OLDS-CADILLAC-GMC
 8282 W. Grand River
 Brighton — 227-1100

Mon. & Thurs.
 Til. 9:00



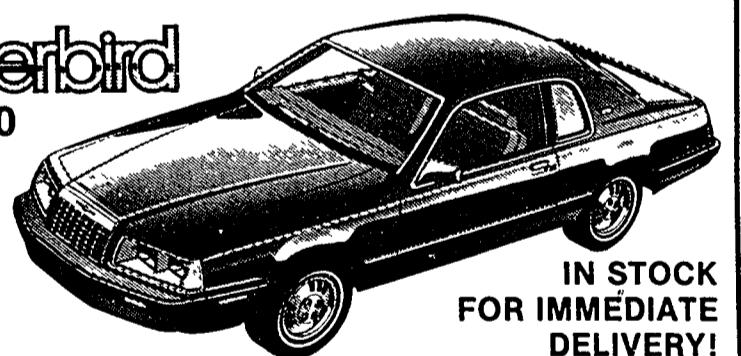
... is giving us \$450.00
 per car dealer incentives
 on Thunderbird and Mustang!

**WILSON FORD IS PASSING
 THE SAVINGS ON TO YOU!!**

Thunderbird

**SAVE \$450
 PER CAR**

in addition to
 our normal
 discounts!

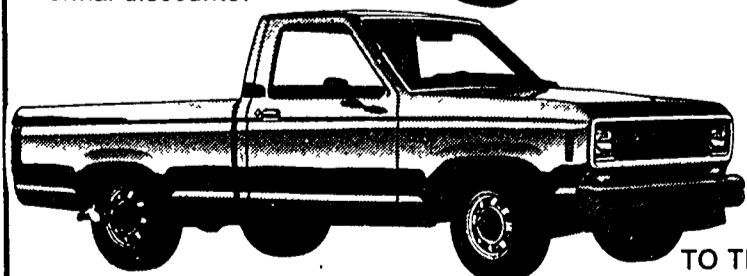
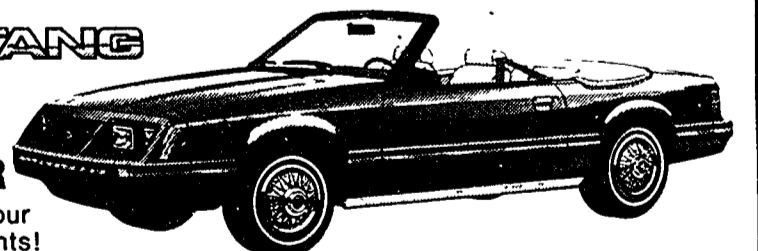


**IN STOCK
 FOR IMMEDIATE
 DELIVERY!**

MUSTANG

**SAVE
 \$450
 PER CAR**

in addition to our
 normal discounts!



**RANGER
 UP TO**

\$350

**CASH
 ASSISTANCE
 TO THE CUSTOMER
 OR 10.9% INTEREST
 ON SELECT MODELS**



EMPLOYEES WELCOME!

HURRY! OFFER ENDS SEPT. 21, 1983



**LIFETIME
 SERVICE
 GUARANTEE**

WILSON
Ford & Mercury

8704 W. Grand River, Brighton
 Next to Meijer's Thrifty Acres
 OPEN SATURDAYS 10 AM-2 PM

(313) 227-1171

If you deal before seeing
 us we both lose!

Buying in Livingston County SAVES DOLLARS & makes sense!

Buying in Livingston County SAVES DOLLARS & makes sense!

Buying in Livingston County Saves Dollars and Makes Sense!

The Livingston County Auto Dealer's Association has over 2000 new & used cars & trucks to choose from

INVENTORY REDUCTION SALE!

Sale Ends August 16th

10.9%
A.P.R. Financing
on Selected Models

10.9%
A.P.R. Financing
on Selected Models

\$9900
OVER INVOICE
ON ALL EAGLES
IN STOCK

\$9900
OVER INVOICE
ON ALL PHOENIXS
IN STOCK

1983 EAGLE SX4

List Price '9315 00
Invoice '8505.21
Plus 99.00
Total **'8604.21**
Plus Taxes, license & trans

1983 PHOENIX

List Price '9869 51
Invoice '8773 26
Plus 99.00
Total **'8872.26**
Plus Taxes, license & trans

JEEP CJ7

List Price '9276 95
Invoice '8445 88
Plus 99.00
Total **'8544.88**
Plus taxes, license & trans

OVER 200
NEW CARS TO
CHOOSE FROM...

**PONTIAC-BUICK
WALDECKER
AMC JEEP, RENAULT**

9797 E. Grand River
Brighton 227-1761

HOURS
Mon. & Thurs. 8:00 AM - 5:00 PM
Tues., Wed., Fri. 8:00 AM - 4:00 PM

LIVINGSTON COUNTY'S NO. 1 USED CAR DEALER

15th Anniversary Specials

- 1975 Dodge Sta-Wagon **\$150**
- 1976 Chrysler 4 Dr. **\$150**
- 1975 LTD 4 Dr. **\$315**
- 1978 LTD Sta-Wagon **\$715**

- 1981 Ford Parcel Delivery Van
6 cyl., 3 spd., p.s., p.b.,
12 ft. box, very clean
ONLY \$6915

- 1981 Mercury Marquis Station Wagon
Full power, wood grain
trim, air, stereo, tilt,
cruise
ONLY \$7815

- 1982 FORD COURIER
4 cyl., 4 spd., factory of-
ficial truck owned by
Ford Motor Co.
ONLY \$5015

- 1977 Pontiac Gran Prix
Auto, air, T-TOPS, tu
tone
ONLY \$1915

- 1976 Volkswagon Rabbit 2 Dr.
4 cyl., 4 spd.
ONLY \$1515

- 1978 Chev Nova 2 Dr.
Auto, trans, p.s., p.b.
ONLY \$1500

- 1979 Monza 2 Dr.
4 spd.
ONLY \$1515

- 1979 Monza Hatchback
Spyder Package, auto.,
air
ONLY \$2115

- 1977 Chrysler Lebaron 2 Dr.
V-8, auto., air, low miles
ONLY \$2715

- 1979 Audi Fox
4 cyl., 4 spd., stereo
ONLY \$3915

- 1980 LTD 4 Dr.
302, auto, air, stereo,
very good cond
ONLY \$5915

- 1976 Mustang Cobra
ONLY \$1015

- 1982 Cutlass Supreme
2 dr., air, auto, stereo,
tilt, cruise, like new
ONLY \$7815

- 1981 Courier Pick-Up
4 cyl., 4 spd., good
cond.
ONLY \$3915

**13.9% INTEREST
48 MONTH FINANCING**

**EVERYBODY
DRIVES A USED CAR**

HILLTOP FORD, LINCOLN, MERCURY
At The Top Of The Hill
HOWELL 546-2250

Colones Car Care Special

Lube, Oil, Filter

Includes 4 qts. oil, filter & grease

\$13⁹⁵

With Coupon
Expires 8-31-83

COUPON

John Colone

Chrysler, Plymouth, Dodge, Inc.

145 E. Main, Pinckney

878-6086
or
878-3151

Open Sales & Service
8 to 8 Mon. to Fri.

HUGE YEAR-END CLEARANCE!

Come On Out
And Get The Best
Deal In
Livingston
County On A 1983
Chevrolet Or
Oldsmobile

Mitchell Stachler
Chevy Olds

OPEN SATURDAYS
Sales Dept.

**MITCHELL-STACHLER
CHEVROLET-OLDS**
307 N. Grand River - Fowlerville

223-9129

BRIGHTON

CHRYSLER-PLYMOUTH-DODGE

1983 DEMO SALE

HUGE SAVINGS

1983 FRONT WHEEL DRIVE NEW YORKER

Pearl White with chesnut 50/50 seats, 2.6 engine, auto., air, P. steering, P. brakes, P. windows, P. door locks, P. windows, tilt, cruise, rear defog, wires and much more. Was \$13,829
NOW \$12,699

1983 CHRYSLER LEBARON MEDALLION

Mark cross leather interior, air, power steering, P. brakes, P. windows, P. locks, tilt, cruise, ETR radio, Michelin tires, wire wheels...was \$13,277
NOW \$11,799

1983 CHRYSLER NEW YORKER "E" CLASS

2 tone, black & silver cloth interior, 2.6 engine, auto, air, P. steering, P. brakes, P. windows, P. locks, cruise, ETR cassette stereo, wire wheels...was \$13,488.
A REAL BEAUTY. NOW \$10,999

1983 PLYMOUTH RELIANT-2 DOOR

Special Edition. A black beauty with red cloth bucket seats, 2.0 L engine, Automatic, P. steering, P. brakes, air, stereo, tilt, cruise, rally wheels, steel belted radials and much, much more... was \$11,204
NOW \$9,999
This vehicle eligible for \$300 rebate

1982 OMNI 024 2 DOOR

Automatic, air conditioning, cruise, power steering & brakes, two-tone paint. Only \$14,000 miles.
NOW \$5,995

9827 E. Grand River, Brighton Phone 313-
Hours: Mon. & Thurs. 8-9; Tues., Wed., Fri. 8-6 **229-4100**

Buying in Livingston County SAVES DOLLARS & makes sense!

Buying in Livingston County SAVES DOLLARS & makes sense!

Buying in Livingston County SAVES DOLLARS & makes sense!

Fine food, country setting wins Elizabeth's acclaim

By MICHELE McELMURRY

When Doug and Elizabeth Campbell opened their quaint 36-seat dining room in Northville's Ware's Square four years ago, neither expected the immediate notoriety the culinary critics bestowed upon their tiny establishment.

In the four years since Elizabeth's opened its doors, the restaurant has won wide acclaim for its exquisite gourmet offerings and picturesque setting.

Nestled along the bend at 227 Hutton, the small brown clapboard restaurant — once a 19th century farmhouse — appears simple and unpretentious. However, the meals prepared inside Elizabeth's kitchen hardly compare to its unassuming facade.

Among the offerings which have gained Elizabeth's a following from miles around are specialties such as duck liver pate, White Peking duck, raspberry puree with creme fraiche, truffles and Alliance of Mousse, a white chocolate mousse topped with fresh strawberry puree and a chocolate mousse topped with coffee zabaglione.

Sitting in the restaurant's dining room on a rainy morning — the tables already set for the evening's dinner crowd — Doug Campbell explains that Elizabeth's is a longtime ambition come true for the couple.

A former food photographer, Doug says he and his wife had contemplated buying a restaurant long ago but had planned to wait until their three children were grown.

However, in 1979, former owners Yvonne Gill and her husband Mark Davis decided to sell the Northville restaurant, then known as Crichton House. Noting that it "seemed like the perfect location" the Campbells bought the restaurant. By June 1, 1979, after considerable redecorating, Elizabeth's opened for business.

In renovating the restaurant, the Campbells retained many of the features of the 19th century farmhouse, such as the elaborate wood moldings surrounding the doors and the uncovered hardwood plank floors.

The walls of Elizabeth's three dining rooms are papered with French country floral prints, and art posters are placed throughout. Each table is adorned with a linen tablecloth and German china.

The casual elegance of Elizabeth's dining rooms is well suited for the array of dishes placed upon its tables.

Elizabeth explains that as a former

food photographer, Doug has a flair for making the food look as good as it tastes.

Though Elizabeth's is the couple's first restaurant venture, Elizabeth Campbell brought to the business a certain degree of culinary expertise.

In addition to working with Yvonne Gill in her catering business, Elizabeth

Among the offerings at Elizabeth's are specialties such as duck liver pate, White Peking duck, raspberry puree with creme fraiche, truffles and Alliance of Mousse, a white chocolate mousse topped with fresh strawberry puree and a chocolate mousse topped with coffee zabaglione.

also was day chef to Duglass during his tenure at the Great Dane.

However, she explains that both she and her husband do the cooking at Elizabeth's.

"We've always liked to cook," she notes, adding that they enjoy experimenting with different recipes. As cookbook collectors — some of which date back to the 16th century — the Campbells say they have many resource materials available for testing.

The Campbells mention they also keep-up with culinary trends on their yearly trips abroad.

"We try to go to Europe at least once a year," Doug notes.

He explains that in the great European restaurants, the owners are the chefs and there is one chef for every five people in the dining room.

While Elizabeth's isn't necessarily patterned after the great European restaurants, its French and Provincial cuisine offers patrons a taste of gourmet European dining.

In assessing the clientele at Elizabeth's, Doug estimates that approximately 60 percent of their customers come from Ann Arbor.

With just two chefs in the kitchen, Elizabeth's only serves dinner — with one sitting during the week and two on the weekend. Part of the menu is changed daily.

"We served lunch for a year when we first opened," Doug explains, "but the lunch business was too good ... we didn't have time to cook dinner."

In addition, a year ago last January, the Campbells went to a prix fixe menu offering five course dinners with

a selection of two or three entrees per evening.

For the Campbells, preparing five-course dinners for 36 or more diners often is more than a full-time job.

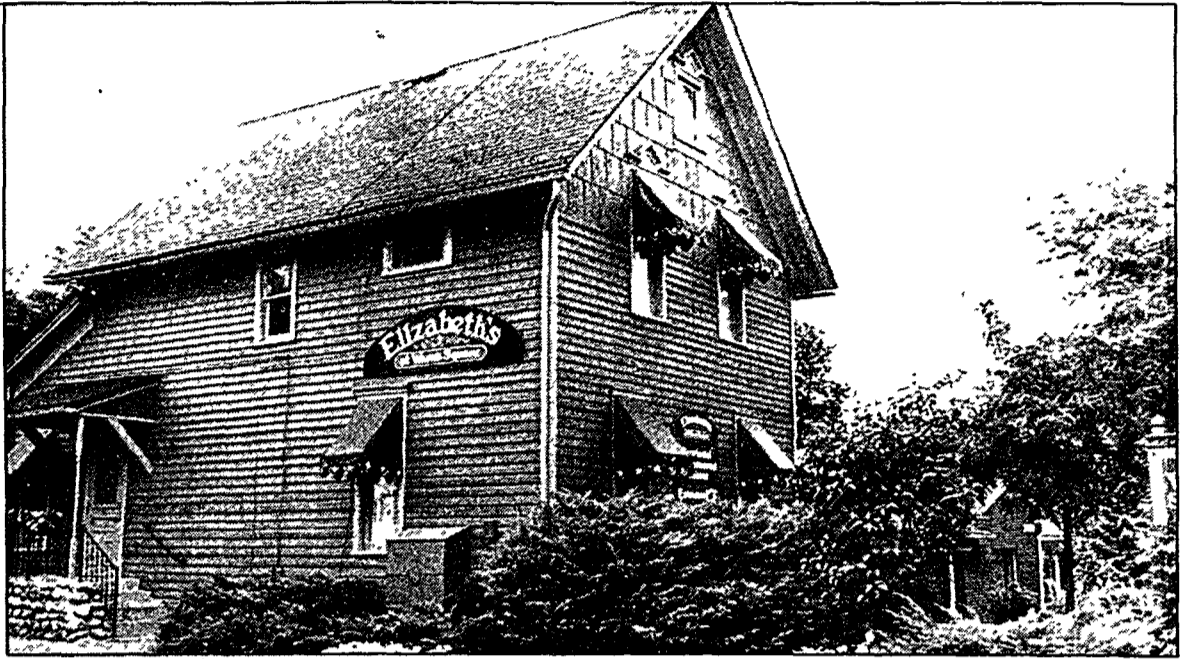
"It's a lot more work than either one of us thought," Doug admits.

The Campbells normally begin each day at 8 a.m. with Doug at the markets and Elizabeth preparing desserts in the kitchen. Elizabeth notes that Doug does all the buying, handpicking produce from area markets.

"All the ingredients are fresh," Doug says, "nothing is frozen. We fly a lot of foods in from France."

He notes that during the winter months produce and fish are shipped in from France. However, whenever possible, much of their food is bought at area markets. In fact, the Campbells were the first wholesale buyers at Paul's Farm Fresh Produce.

Doug explains that the actual dinner preparation gets under way around 4:30 p.m. Dinner on weekdays is served no earlier than 6:30 p.m. with weekend dinners at 6 p.m.



Elizabeth's retains charm of 19th century farmhouse

Record photos by STEVE FECHT

Continued on 2

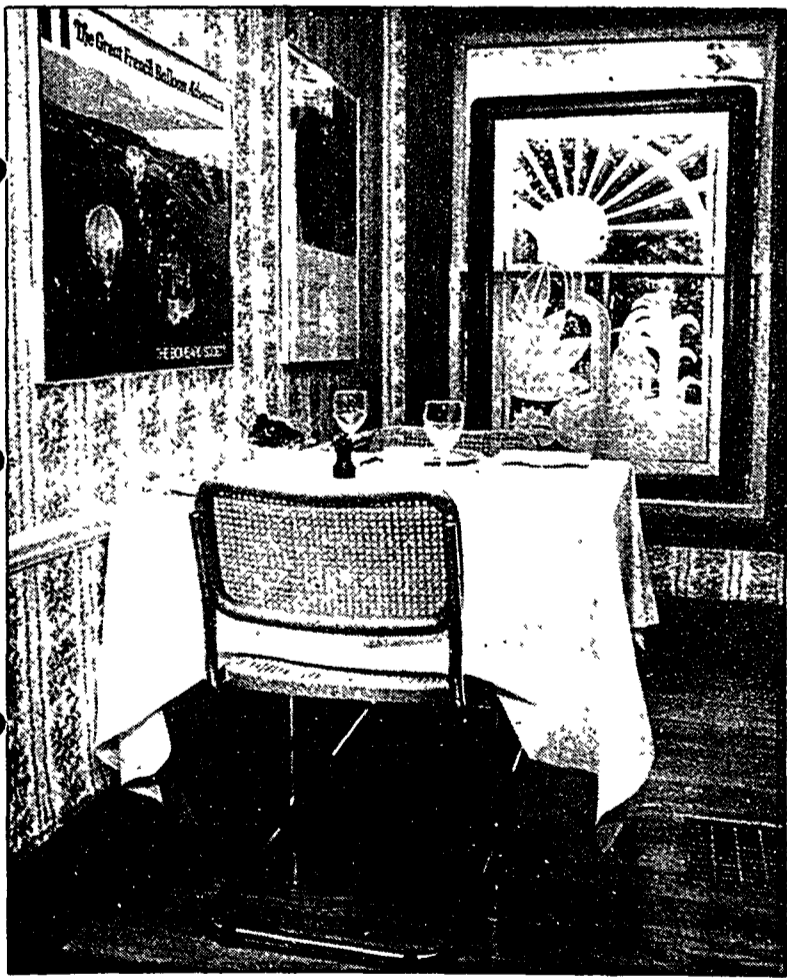


Table holds a linen tablecloth and German china

Law Offices Of:

William L. Fischel

- Professional Negligence • Divorce (Malpractice)
- Work-related injuries • Real Estate
- Vehicular Accidents • Probate
- Injuries caused by another's negligence • Business

Initial Consultation - No Charge

Conveniently located at One On hand Hill Place
 just off I-275 348-5900

Del's shoes and clothing

now featuring:

Leathers, Joggers and Canvas Shoes
 For Men, Women and Children

Diana Lee COLLECTIONS
 Mark Andrew EXCLUSIVES
 Jumping-Jacks.
 FLYERS
 WHIZ KIDS T.M. by Jumping-Jacks.

Savings of 30% to 40%

Not all sizes available in all styles

NIKE

All Nikes 10% OFF And More
 For Men, Women and Children

Back To School & Campus '83

Jeans For The Whole Family

Lee Youthwear JORDACHE
 Calvin Klein
 Sedgfield chic by h.i.s.

Savings Up To 30%

Ladies' Jeans

Chic Reg. \$32.00 NOW \$26⁹⁹
 Lee London Rider, Dress Blues, E.S.P. Stretch
 Jordache Reg. \$44.00 NOW \$34⁹⁹
 Calvin Klein Reg. \$44.00 NOW \$29⁹⁹

Men's Jeans

Lee Reg. \$27.00 NOW \$21⁹⁹
 Lee Student Reg. \$25.00 NOW \$20⁹⁹
 Jordache Reg. \$42.00 NOW \$34⁹⁹
 Sedgfield Reg. \$28-\$35.00 NOW \$21⁹⁹-\$27⁹⁹

Lee Boys' & Girls' Jeans regular & slim 5-7, 8-18

Choose from our New Fall & Late Summer Tops

Save From 20-50%

Del's Department Store Formerly Brader's 141 E. Main, Northville
 Del's Shoes 153 E. Main, Northville
 Del's Department Store 322 S. Main, Plymouth
 Del's Hls & Hers Clothing Great Oaks Mall, Rochester
 Del's Shoes Great Oaks Mall Rochester

Prices Good thru August 31, 1983 Mon.-Sat. '11 6, Thurs. & Fri. '11 9

In Our Town

Construction begins on blacksmith shop in village

By JEAN DAY

Stakes were pounded into the ground last week as the foundation was laid out for a blacksmith shop in Mill Race Historical Village. It will be the first reproduction building in the village and is to be located adjacent to the Wash Oak Schoolhouse.

Fran Gazlay, past president of Northville Historical Society, is chairman of the building project. He reports the blacksmith shop will be a re-creation of one operated on Main Street around the turn of the century by John Hirsch. It was located on the site of the present Northville Farmer's Market at Main and Hutton.

In the photograph being used as a basis for design of the building street car tracks are visible along Main. They were used for the interurban that ran from Detroit to Northville. This, says Gazlay, dates the time of the shop pictured between 1898 and 1914.

"We're asking everyone to save stones," Gazlay adds. When buildings were moved to the village, they were placed on recessed foundations to be fronted with cobblestones. Girl Scouts and others volunteered for this project. To date the foundations of the New School Church, Hunter house and the Mill Race Weavers' cottage have been fronted with cobblestone. "We're going to be doing the Yerkes House and the schoolhouse," Gazlay reports. It's going to require a vast supply of stones as the entire blacksmith shop is to be fronted with the cobblestones also.

Working with Gazlay on plans for the 16-by-40 foot shop are Ken Harrison, Donald Fee, Jim Harris and John Brugeman, new president of the historical society. Donald DiComo drew up the plans for the foundation as his donation to the project, Gazlay notes, explaining that all funding to date has been from

the historical society treasury. Such projects as the Northville Home Tour and the Tivoli Fair are major fundraisers for the society.

When completed, the blacksmith shop is to be the museum for the village. The Mill Race Village marked its 10th anniversary last year. It began with the intent of preserving the New School Church which was moved from Wing Street the same year as the Hunter House was saved when it was moved from Main (where Griswold now extends to Seven Mile). The Yerkes house was donated by Northville Downs when it acquired property on Cady for parking expansion. Paul Folino donated the weavers' cottage, his former office, which was moved to the village and then restored by the weavers' guild. The schoolhouse was moved to the village eight years ago from Currie Road with restoration completed this year. It is planned that it be used by local teachers as an experience in learning about the past.

The only other reconstruction in the village is the gazebo which was erected in 1979 under Harrison's direction. It was a project of students in his class at John Glenn High School. The bridge was a donation of the Northville Community Chamber of Commerce.

Beckers loan art for tribute exhibit

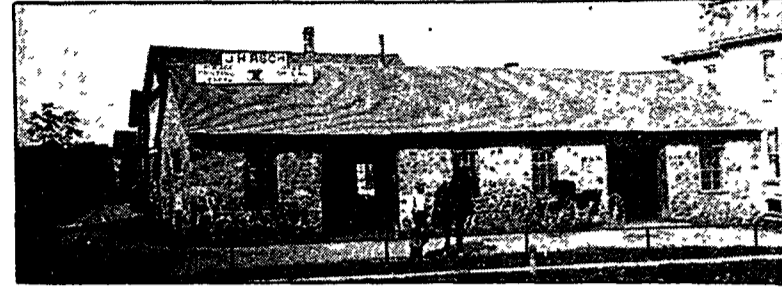
The Wilfred Beckers are loaning a watercolor done by Wayne L. Claxton for an exhibition of the late artist's paintings and prints to be on view through August 25 in the Community Arts Gallery of Wayne State University from 9 a.m. to 5 p.m. week days.

The exhibit is a tribute to the educator who was chairman of the university's department of art and history from 1936-59. He is credited with building the university's studio art program

into one of the finest in the nation. "I was one of his students, and he hired me when I completed my masters," Bill Becker, a professor at Wayne State, relates, speaking of their close association.

Becker recalled last week that two years ago at Thanksgiving, at the urging of his wife Audrey, they flew to Arizona to visit Claxton in retirement and, in view of his unexpected death in Tuscon July 2, are especially thankful they did. The exhibit, which had its opening Monday, contains works of Claxton owned by the Detroit Institute of Arts.

The artist worked primarily in watercolor, Becker explains, noting that the exhibit contains a few oils and prints also. Most of Claxton's works are in walnut frames designed by the artist and made by Becker.



Work has begun to re-create blacksmith shop in Mill Race

Fine food draws diners to Elizabeth's

Continued from Page 1

Entrees, which are cooked to order, are planned about a week in advance, Doug notes. The remainder of the dinner is planned that morning.

Though the Campbells own a home in downtown Farmington, they more recently have moved into the upper floor of the restaurant.

Doug explains that with stocks on the stove all night, they feel more comfortable close to the restaurant.

In addition to Doug and Elizabeth in the kitchen, the staff at Elizabeth's includes two waiters, two waitresses and two dishwashers. Elizabeth notes that most of the staff at the restaurant are students at Northville High School — including daughter Kimberly, a senior at NHS, who works in the kitchen. The couple's son Christopher is a waiter at the restaurant and their youngest daughter Sally, 13, helps prep in the kitchen.

Doug mentions that among the advantages of owning the restaurant is that he feels closer to his family.

"With the type of photography I did," he says, "I was gone 10 months a year."

Having spent the past four years working at his home — more or less — Doug says he has no regrets about leaving the photography business.

"We really enjoy what we do," he says, noting that the couple's 12-15 hour days in the kitchen are in many ways a labor of love.

Elizabeth's is located at 227 Hutton. Dinners are served Monday through Saturday. Cost is \$29.50 per person for five courses. For reservations, call 348-1575.



Elizabeth's owners and chefs Doug and Elizabeth Campbell

Northville becomes an area attraction with Y tour slated

Northville is becoming an area attraction. The YWCA of Western Wayne County has slated an autumn travel day to Northville, offering a full day in the community September 22.

The visit is planned to coincide with the Northville Home Tour.

The tour departs from the YWCA at 26279 Michigan Avenue at 9:15 a.m. and returns at 5 p.m. It will include a visit to

Mill Race Historical Village where docents will be on duty to give the history of the buildings.

Time will be allowed to browse in local shops and visit the farmer's

market. YWCA director Corrine Vincent, a Northville resident, in announcing the tour describes the Mainstreet restoration with flower-lined streets and park benches.

Arrangements have been made with McKinnon's to have a crab meat luncheon. There will be a late afternoon pause at Parmenter's cider mill and a stop at an orchard for apples.

GOING OUT OF BUSINESS SALE
Last Day Aug. 15, 1983
Limited amount of stock left.
JAN'S LOFT
107 E. Main
Northville
348-0385

Ask us for counseling prior to need

Many people today are interested in making funeral arrangements prior to need. We offer complete information on pre-arrangements and pre-financing plans (including trust agreements), available now without cost or obligation. Feel free to ask us for assistance at your convenience. It may ease your family's concern tomorrow.

Ross B. Northrop & Son
FUNERAL DIRECTORS SINCE 1910
19091 Northville Rd.
Northville
348-1233
22401 Grand River
Redford
531-0537

Maybe We're Not Magicians. . .
but we do have some nifty little tricks for getting clothes spruced up. Takes experience like ours.

Freydl's
112 E. MAIN NORTHVILLE
349-0777

PROVIDENCE HOSPITAL AMBULATORY CARE CENTER
39500 West Ten Mile Road, Novi, Michigan 48050
471-0300
COMMUNITY SERVICE. A COMMITMENT

24 HOUR EMERGENCY CARE CENTER
471-0300

PEDIATRICS
Manny Agah, M.D.
Yani Calmidis, M.D.
John Romank, M.D.
478-8040
Jerome Finck, M.D.
Donna Opie, M.D.

INTERNAL MEDICINE
James Livermore, M.D.
478-8044
James Crowl, M.D.

ALLERGY
Robert E. Weinstein, M.D., P.C.
478-8044

FAMILY DENTISTRY
Alan Kessler, D.D.S., P.C.
Mark Angelocci, D.D.S.
471-0345
Terry Nielsen, D.D.S., P.C.
Marie Clair, D.D.S.

ORTHODONTICS MYOFUNCTIONAL THERAPY
Donald M. Wayne, D.D.S., M.S.
471-0345
Donna Mathiak, R.M.T.

ORTHOPEDICS
Jerry H. Rosenberg, M.D.
471-2890

CLINICAL LABORATORY DIAGNOSTIC RADIOLOGY
DIAGNOSTIC ULTRASOUND
471-0300

Cheese Balls, Cheese Logs and Creamy Swiss Bars, any two for just \$5.00

For every one you buy, we'll give 25¢ to the Muscular Dystrophy Association.

Offer good August 1 through September 5.

Hickory Farms OF OHIO®
We'll give you a taste of old-time-country goodness.®

Eastland Center
Twelve Oaks Mall
Oakland Mall

©1981 General Host Corporation Offer valid at participating Hickory Farms of Ohio® stores

WANTED

Green Ridge Nursery, Inc.
For Rolling Back Prices to The Good Old Days!

REWARD: 50% OFF All Nursery Plants in Stock! (While Stock Lasts)
TREES - SHRUBS - EVERGREENS

CLAIM: Every Wednesday through Saturday 8 a.m. - 5 p.m. for the month of August, 1983
at 9710 Rushton Road, South Lyon
3 Miles W. of Pontiac Trail, ¼ Mile N. of 7 Mile Rd.

For More Info: **Call 349-1111 or 437-5454**

Green Ridge Nursery, Inc.
Payment Upon Selection Required
Master Card & Visa Accepted
Sale Ends Saturday, August 27, 1983 at 5 p.m.
ALL SALES FINAL

Sports

The Northville Record

Mets edged in E League tournament final

A talented Fraser team rallied for three runs in the bottom of the seventh (final) inning to wrest the Class E (age 14-16) district baseball championship from the Northville league champion Mets last Thursday, 5-4.

The Mets had sealed the Northville pennant and qualified for the district playoff with a 13-1 romp over the Reds the previous Tuesday, a game highlighted by Mets starter Eric Kapelanski's three-hit pitching performance.

In the district final Thursday, Northville got the jump on Fraser behind the tough pitching of Chris Hauser and timely RBI singles in the second inning by outfielder David Hall and second baseman John Taschner, and by Taschner again in the fourth.

Northville got one more run in the seventh after first baseman and cleanup hitter Paul Newitt reached base on a fielder's choice, then advanced home on three straight walks.

In five innings, Hauser permitted only two runs, one unearned, struck out four and scattered just three hits. But Mets ace Daraban, summoned from third base to work the last two innings, ran into trouble. Fraser took advantage of two walks, a single and an error in the final inning to overtake Northville's 4-2 lead, the winning run coming in on a two-out RBI single.

Newitt paced the Mets' offense, reaching base four times, including a single and a double.

There was plenty on the line in the Mets-Reds game two days earlier — had the Mets-Reds had been the Phillies representing Northville at the district playoffs instead — but a rollicking Mets offense and Kapelanski's pitching sealed the league title easily.

Kapelanski went all seven innings, striking out four, while the Mets backed him up with nearly perfect defense, committing just one error. In particular, shortstop Fred Cahill looked particularly sharp, handling eight putouts without a miscue.

Kapelanski wielded a hot club on offense, too, singling three times and knocking in four runs. The Mets offense exploded in the middle innings, battling around the order in the fourth and fifth inn-



The Mets' Chris Hauser (left) has the go signal for the hit-and-run in last Thursday's E League district final. Hauser pitched well in the 5-4 loss to Fraser, allowing just one earned run and three hits. Record photo by B.J. Martin.



Cindy Panowicz

Cindy hurdles the heptathlon

By B.J. MARTIN

Cindy Panowicz's mother was in the other room on the telephone answering a call from the Detroit Free Press. She told the caller politely Cindy was in the middle of an interview right now, and would call back when she had the time.

With such attention from Big Media, it isn't puffery anymore to say that Cindy is someone extraordinary. The record speaks for itself — a second place in the national Junior Olympics heptathlon last month, in what she considered a lackluster performance. On what she considers her best day, she won four events at the Western Lakes Activities Association league meet in May — as a *sophomore*.

Maybe she's not a star outside her hometown yet, but at the rate she's going, Cindy may just make an imprint.

She's now 15. She'll be 16 next month, about the age exceptional athletes have to decide how far they want to go and how willing they are to go — at least the one she admits to — is an athletic scholarship to an NCAA college.

Cindy's genes have served her well, giving her a slender but strong stature already about 5'11" in height. Her long legs are ideally suited for the hurdles and long jump, her best events.

"When I was 11, I entered the long jump at a recreation track meet, and I'd never tried it before. I got first place, and that's what started it," Cindy explained quietly.

Continued on 6



SEE YOU THIS COMING SEASON AT SOUTH LYON

NEW

700 BOWL and COCKTAIL LOUNGE

BOWL IN AIR-CONDITIONED COMFORT

BRUNCH LANES, BAR AND LOUNGE, DANCING ENTERTAINMENT, KITCHEN FACILITIES, ALL SPORTING EVENTS AND SPECIALS ON OUR 10 FOOT COLORED TELEVISION, GAME ROOM, AND EQUIPMENT FACILITIES.

LEAGUES FOR EVERYONE:

WEEKDAY MORNINGS, AFTERNOONS, ALTERNATING SAT. AND SUN.

LADIES, MEN, MIXED, KIDS, AND SENIOR CITIZENS. ARRANGEMENTS FOR SPECIAL BOWLING PARTIES.

1983-84 Schedule of 700 Bowl Leagues

Sun.	Morning Specials—9:00 a.m. till 12:00 noon (All. Wks.) 4 member mixed teams—1:00, 3:30, 6:00 & 8:30 p.m.
Mon. through Fri.	Ladies morning leagues—3, 4 or 5 member teams—9:30 a.m. Ladies mid-afternoon trio league—4:00 p.m. Ladies 5 member team league—6:30 p.m. Ladies 4 or 5 member team league—9:00 p.m. 4 member mixed team league—9:00 p.m.
Tues.	Morning leagues—9:30 a.m. Senior citizens league—1:00 p.m. Men's 5 member team league—6:30 p.m. Men's 5 member team league—9:00 p.m.
Wed.	Morning league—9:30 a.m. Ladies' afternoon league—12:30 p.m. Afternoon kids school league—3:30 p.m. Men's 5 member team league—6:30 p.m. 4 member mixed team league—6:30 p.m. 4 member mixed team league—9:00 p.m.
Thur.	Morning league—9:30 a.m. Ladies' 5 member team league—12:30 p.m. Ladies' 5 member team league—6:30 p.m. *700 Bowl men's classic league—9:00 p.m.
Fri.	Morning league—9:30 a.m. Ladies' afternoon league—12:30 p.m. 4 member mixed team league—6:30 p.m. 4 member mixed team league—8:45 p.m.
Sat.	Young American Bowling Alliance (YABA) 4 age divisions—peanuts, preps, juniors & majors) will have 10:00 a.m. & 1:00 p.m. starting times (All. Wks.) 4 member mixed teams—5:30 p.m. (All. Wks.) 4 member mixed teams—7:30 p.m.
Sat. *	*Moonlight Doubles Every Saturday—10:00 p.m. Hdcp., jackpots, no-lap, corner stripe pin strikes, strike roll offs, etc., and a load of fun and socializing for all bowlers.
Any Day—	Special league times for the industrial leagues on the afternoon or midnight shifts.


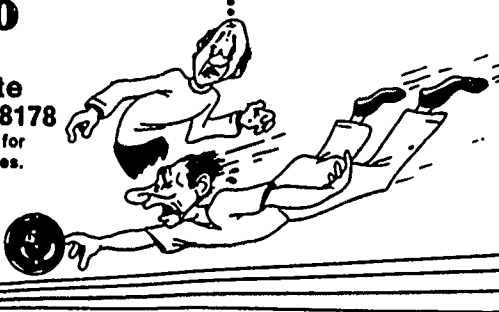
INDIVIDUALS, COUPLES, TEAMS AND COMPLETE LEAGUES CAN RECEIVE THEIR TIME SELECTION NOW. FOR LEAGUE AND OTHER INFORMATION PHONE:

WATCH FOR OUR GRAND OPENING SPECIAL

437-0700

700 Bowl
700 N. Lafayette
South Lyon, MI 48178

Applications being taken for bar persons and waitresses.

SALEM LUMBER

30650 plymouth road
livonia
422-1000

hot vanity Bargains

Vanity 20" x 17" Special pecan

\$34⁸⁸

includes top

all larger sizes in stock

25" x 19"
31" x 19"
37" x 19"
49" x 19"
61" x 19"

Your choice of MANOR OAK • VILLAGER • VILLAGERCANE



Choose either style of decorator designed vanity with its cultured marble top, pop-up faucet

\$21⁸⁸

your choice of oak styles **\$111⁸⁸** includes top

in the vanity shoppe

dog-eared board fence

All treated 6" rough sawn boards 6' x 8' section

\$27⁸⁸

Regularly \$29⁸⁸

(Dog-Eared Design)

6" x 6" dog-eared treated boards \$1.29 ea.

8 ft. pine treated timbers

4 x 4 @ \$3⁸⁸ ea
4 x 6 @ \$4⁸⁸ ea
6 x 8 @ \$10⁸⁸ ea

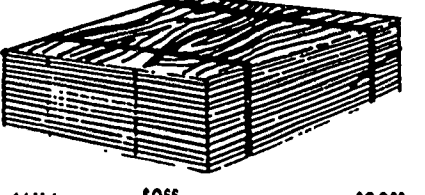



sheet stock sale

4' x 8'

3/8" sheetrock @ \$2⁹⁹ ea
5/8" partical board @ \$7⁴⁰ ea
1/8" std. hardboard @ \$3⁹⁶ ea.

3/4" G1S AC pine @ \$18⁸⁸ ea.



1/4" lauan @ \$8⁸⁸ 3/4" birch @ \$39⁸⁸
3/4" lauan @ \$39⁸⁸ 3/4" oak @ \$46⁸⁸

prices good thru 8-17-83

new summer store hours
monday thru friday 8 a.m. - 8 p.m.
saturday 8 a.m. - 6 p.m.
sunday 10 a.m. - 6 p.m.

we custom cut wood and plywood
mon. thru sat. 8 - 5:30 p.m.
sunday 10 - 4 p.m.

new summer shed and mill hours
monday thru Saturday 8 a.m. - 5:30 p.m.
sunday 10 a.m. - 4 p.m.

TRY OUR QUALITY PROCESSING TODAY



USE THIS COUPON TODAY

COLOR PRINTS

ONLY **10¢** Plus Developing EACH

ORIGINAL COLOR ROLL FILM ONLY • NO REPRINT ORDERS

110 126 35MM 02SC Excludes System 35

Processing by *Finprints*

DEALER NAME

Coupon Expires Aug. 16, 1983

Open Daily 9-7;
Sat. 9-5; Sun. 9-1

NORTHVILLE PHARMACY
"Pharmacy First Since 1872"
We carry Hollister Ostomy Products



134 E. Main, Northville, Phone 349-0850

Varsity tennis starts Monday

Attention, girls interested in playing on a team for Northville High School this fall: Tennis practice and tryouts for Northville High School girls' tennis teams will begin Monday. The practices will run from 9 to 11 a.m. every morning at the high school tennis courts. For players interested in playing on a team this fall, these practices are mandatory.

For additional information, contact NHS offices at 349-3400.

Sting somehow 'boots' tournaments without losing

Things must be getting a little frustrating for the Northville Bonanza Express Soccer League Sting (Under 18 Girls). In the squad's last three tournaments, the Sting has lost only one playoff game — and made the finals in only one.

The most recent was last week's eight-team Bluewater Tournament, Sarnia, Ontario. The Sting won two and tied one in tournament action, but so did Scarborough, the squad the Sting tied, in the four-team division.

Scarborough, however, scored more goals throughout the tournament, qualifying the team to represent the division in the final under tournament tie-breaker rules.

"Well, I'm really proud of the way the girls have been playing," observed coach Skip Pettit. "You really can't fault them at all."

Pettit has some outstanding players on his team, no question — leading scorer Kim Pettit, his daughter, Kim's teammate on the Northville Mustangs, midfielder Kathy Korowin, and all-star Jane Moylan from Livonia Ladywood, for example. But Skip credits all the Sting's successes to team efforts. "Everybody has been playing to their potential," he said last week after the tilt.

Eight of the team's players come from Northville — aside from Kim, Korowin, and Moylan are April Karl,

Jill Jensen, Jill Bemer, Nancy Polner and Cathy Young. There are four players from Livonia — including Dorene Dudek, a superb playmaker — three from Southfield and two from Canton.

In the Bluewater Tourney, Dudek and Kim Pettit were particularly dazzling. Kim scored in all three tournament games, including five goals against St. Catharine's in the second round. But according to Skip, it was Dudek's playmaking skills that led to many of Kim's goals.

In the tournament opener, the Sting tied Scarborough 1-1 after leading most of the game on a goal by Kim. Late in the second half, the referee whistled

Sting three times for infractions deep in Northville territory, the first an indirect free kick, the next two direct free kicks.

On the third, goalkeeper Bethany Kamin of Southfield made a spectacular save on a hard, high shot, pinning the ball against the crossbar. But the ball bounced out in front of the goal as she fell back to earth after the diving save, and a Scarborough striker slammed home the rebound.

In the second round, the Sting walloped St. Catharine's 7-0. "We thought we might need to run up the score at least a little bit," Skip said, "because of the tie-breaker rule — it

rewards you for scoring a lot of goals. But the girls really could do no wrong that game," he added with a smile.

Aside from Kim's five-goal effort, a team record, Moylan and Sarah Wallman of Canton also posted goals, while Dudek collected an armload of assists.

In the Sting's 2-1 win over Oshawa, the team was just as dominant, but were thwarted repeatedly by Oshawa's fine goalkeeper. "She kept them in the game," Skip remarked. "I'd say the ball was in our half of the field maybe three times, and their goalie must have made at least 20 saves." Dudak and Kim tallied in the win.

Idle spell leaves Reds a little rusty

The Reds of Northville "F" League had about two weeks to celebrate their winning the league championship last month — and that proved a little too long, as the Mets fell to Livonia 15-3 in the final of the district playoffs held in Northville last week.

Reds pitchers, who had lost only one game during the regular season, suddenly developed control trouble, issuing 15 walks. And the usually steadfast defense looked rusty in the loss.

Catcher Donn Hubbard batted in two runs with a first-inning single to lead the Mets' offense.

In all, it was a sad ending to a fine season. The Reds had gone 17-1 during the regular season, paced by the hitting and pitching of Eric Shurian, Jay Moore and Brett Belliston, the offensive punch of Hubbard, Adam Behen, Jay Moore, Eddie Walsh and Chris Drew — all of whom hit over .400 — and the steady play of outfielders Scot Howard, John Becker, John Rosselot and Ron Sanders and infielder/pitcher Rick Cazan.

Northville's Newton takes first in butterfly

Northville's Eric Newton, 10, took first in the 50 meter butterfly at the Long Course State Championship Swim Meet in Southfield last weekend, stroking out a 35.17 for the state title in his age category.

The championships, held at the Long Course Swim Club, drew participants from all over the state, including the Clarenceville Swim Club, of which Eric is a member.

Besides his strong showing in the butterfly, Eric, a student at Silver Springs Elementary, also took four third places — in the 100 meter freestyle (1:12.14); the 200 meter individual medley, consisting of 50 meters butterfly, 50 meter backstroke, 50 meters breast stroke and 50 meter freestyle (3:04.11); the 100 butterfly (1:24.78); and the 200 meter freestyle (2:40.60).

Eric also placed sixth in the 100 meter backstroke (1:31.69) and placed fifth in the 50 meter freestyle (33.41).

Softball Standings

"A" LEAGUE	
Aberdeen's	14 3 1
Getzie's Pub/J&S Steel	10 5 1
Sheehan's on the Green	9 7 0
Long Mechanical	8 8 0
"B" LEAGUE	
Northville Party Shop/Jaycees	13 4
Dale's Graphic Supply	9 8
Winners Circle	8 8
Thermal Sash	8 9
O'Sheehan's	8 9
Eagles	3 13
V.F.W.	0 16
"C" LEAGUE	
Sterling Oil	15 1 0
Urban's Partition	13 4 0
Reef Manufacturing	10 5 1
Getzie's	9 7 1
Ductile Chrome Process	8 8 0
St. Paul's Lutheran	8 10 0
Belanger, Inc.	6 10 0
Our Lady of Victory	6 11 1
Malarky's Pub	4 12 0
Northville Lab	3 12 1

Cindy lauds coaches

Continued from 6

"One of the great things about having Ann for a coach," Cindy said, "is that she's not the kind of track coach who just goes out and blows a whistle and watches her stopwatch. She ran some 880s with me to push me harder. She'll do six miles with me to keep pushing me hard, although it's really hard for her. That's something a lot of coaches won't — or can't — do."

She definitely wants to coach eventually, she said, particularly having had a good experience with Dayton and Turnbull, and former coach John Monagle.

"Brian (a Northville High School graduate who was a steeplechase runner in college) works really hard and on this one day off he had, he called up and asked if I wanted to work on the high jump with him. He really helped me a lot."

Besides track and field (and swimming) Cindy is interested in skiing (her sister Julie, a freshman at University of Georgia this fall, is a downhill ski instructor) and basketball — although she likes basketball, the demands on preparing herself for track season preclude being able to play.

She credits her parents with being supportive but not pushy. "I don't always want them at my meets, even though they always want to go. But it's good having them there. A lot of kids on the team, their parents never go at all."

She says being with a team provides her the best competitive environment. "When we have the whole team together, we'd maybe have parties the night before a meet and all eat pasta. I like having the team out there supporting me. With individual competition, it's up to you to get yourself ready."

"I think it's good that they've moved freshmen up to high school sports this year," she added. "There are a lot of freshmen who doing real well, and it would've helped having them."

She said the idea of coaching appeals to her. "I'd like to coach, maybe at the high school level," she added. "Maybe at Northville — I could take over when Ann quits!"

"BASES LOADED" WITH BARGAINS From



CDX SHEATHING
4x8-1/2"
\$7.89

BARN KITS
COMPLETE LUMBER KIT & TEMPLATES MAKE IT AN EASY DO-IT-YOURSELF JOB!
8'x8' Kit
\$215.00

10'x12' Kit
\$330.00
Nails & Shingles Included

BEST PRICE IN TOWN!

2x4 STUDS
STUD GRADE
2x4-7'
99¢

50% OFF PAINT SALE
CLOSE-OUT! LAST CHANCE TO SAVE 50% OFF ALL SERVISTAR 'BEST QUALITY' PAINTS

INTERIOR FLAT
\$8.49 Reg. \$16.99

EXTERIOR FLAT
\$9.77 Reg. \$19.55



TREATED LUMBER

14'x10' DECK **\$279.98**

INCLUDES: Lumber, nails, posts & post brackets

	8'	10'	12'	14'	16'
2x4	2.39	2.99	3.89	4.29	5.19
2x6	3.59	4.49	5.95	6.69	7.99
4x4	4.45	6.19	7.39	9.05	10.80

FIR SIDING



NATURAL RUSTIC
TEX. 1-11
8" O.C.
4'x8'
\$13.99

LANDSCAPE TIMBERS

Rough sawn. Preservative pressure treated.

3x5-8' **\$2.99**

4x6-8' **\$4.39**

6x8-8' **\$9.95**

STOCKADE FENCE



SPRUCE #1 Grade
6'x8'
\$18.95



Our low prices help you make it.

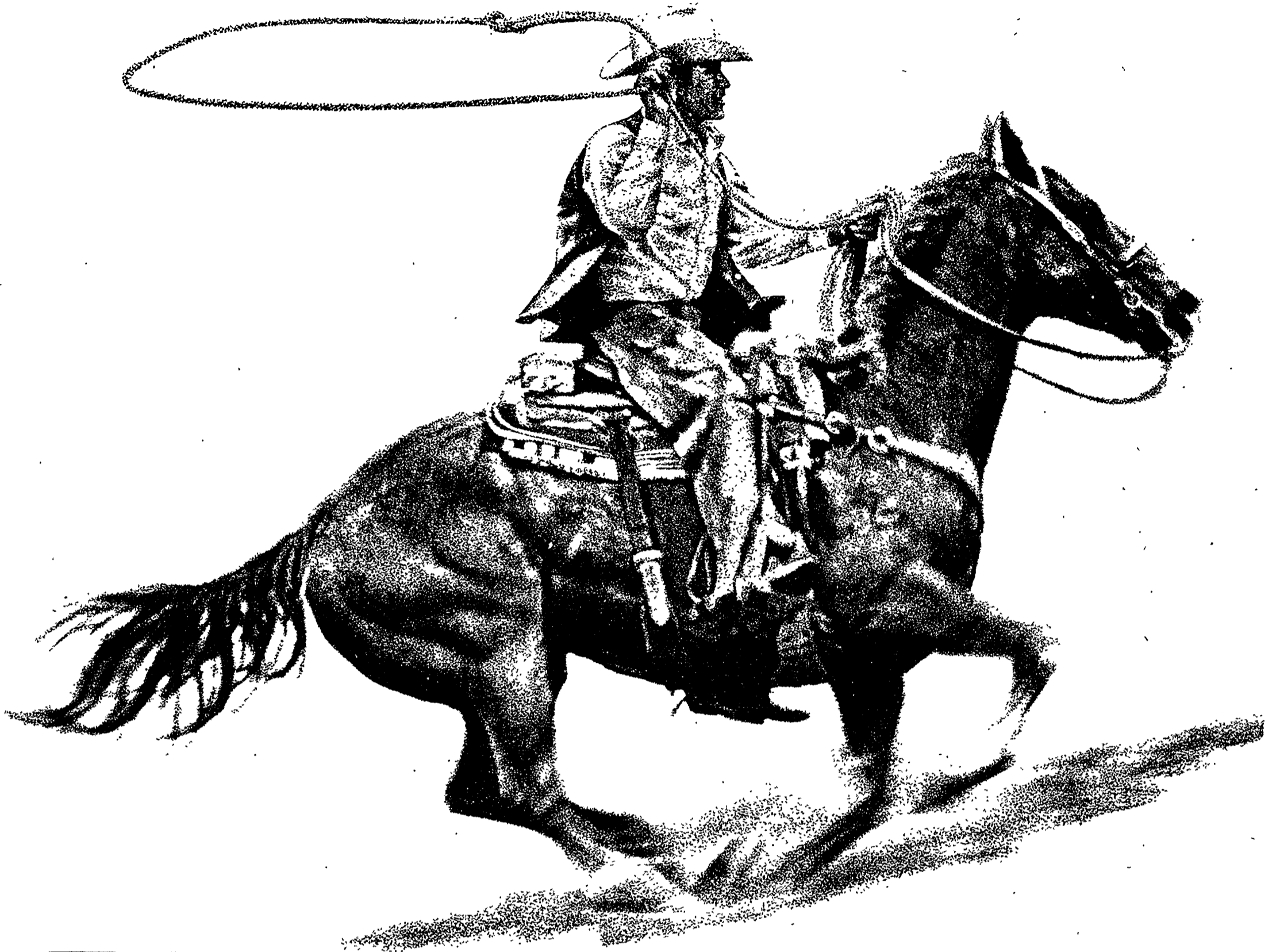
BRIGHTON	525 Main St	227-1831
DETROIT	5311 E Nevada	368-1800
FENTON	14375 Torrey Rd.	629-3300
LINCOLN PARK	3255 Fort St	386-5177
MT. CLEMENS	55 Groesbeck	469-2300
OWOSSO	1315 E. Main St	723-8911
REDFORD	12222 Inkster Rd.	937-9111
SOUTHFIELD	22800 W 8 Mile	353-2570
SOUTH LYON	20801 Pontiac Trail	437-4161
UTICA	48075 Van Dyke	739-7463
WATERFORD	7374 Highland Rd.	666-2450
YPSILANTI	629 N Huron	481-1500

Some items may not be available at all locations. All items Cash & Carry. Sale items marked with *.

OPEN:
Mon. thru Thurs.
8 a.m. to 6 p.m.
Friday
8 a.m. to 8 p.m.
Saturday
8 a.m. to 5 p.m.
Sunday
10 a.m. to 4 p.m.

PRICES GOOD THRU AUG. 10-16

The spirit of Marlboro in a low tar cigarette.



Marlboro Lights



Warning: The Surgeon General Has Determined That Cigarette Smoking Is Dangerous to Your Health.

11 mg "tar," 0.8 mg nicotine av. per cigarette, FTC Report Mar '83

CHATHAM

GET THE LOWEST PRICES IN TOWN!
WITH CASH DIVIDEND SPECIALS

PLUS WEEKLONG...
DOUBLE COUPON

Coupons over 50¢ will be redeemed at face value. Amount to be refunded cannot exceed the cost of the coupon item. Limit 1 coupon for any 1 product. Retail store coupons and free coupons excluded.

LOW OR LOWEST..

MOUNTAIN DEW, REGULAR & DIET
PEPSI OR PEPSI FREE

8 HALF LITER BTL. **179**

PLUS DEPOSIT

Cash Dividend SPECIAL

MT. DEW, REGULAR & DIET
PEPSI OR PEPSI FREE

8 HALF LITER BTL. **99c**

PLUS DEPOSIT WITH 1 FILLED CASH DIVIDEND CERTIFICATE

LOW OR LOWEST..

CHUNK LIGHT
BREAST O' CHICKEN TUNA

IN OIL OR WATER 6 1/2-OZ. CAN **69c**

Cash Dividend SPECIAL

CHUNK LIGHT
BREAST O'CHICKEN TUNA

IN OIL OR WATER 6 1/2-OZ. CAN **9c**

WITH 1 FILLED CASH DIVIDEND CERTIFICATE



LOW OR LOWEST..

BONNIE BRAND
SLICED BACON

1-LB. PKG. **99c**

Cash Dividend SPECIAL

BONNIE BRAND
SLICED BACON

1-LB. PKG. **39c**

WITH 1 FILLED CASH DIVIDEND CERTIFICATE

LOW OR LOWEST..

WHITE OR ASSOTRED
NORTHERN TISSUE

4 ROLL PKG. **89c**

Cash Dividend SPECIAL

WHITE OR ASSOTRED
NORTHERN TISSUE

4 ROLL PKG. **49c**

WITH 1 FILLED CASH DIVIDEND CERTIFICATE

PRICES EFFECTIVE AUG. 10 THRU 6 P.M. AUG. 16, 1983

BANQUET POT PIES

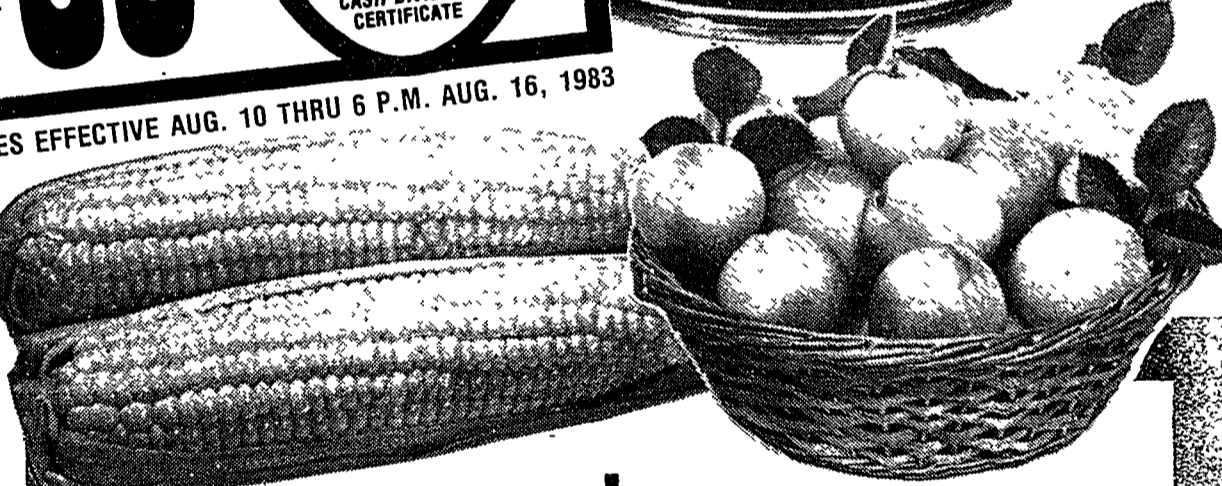
35c

FROZEN 8-OZ. PKG.

SKIM, CHOCOLATE, BUTTERMILK or
HOMOGENIZED BORDEN'S MILK

YOUR CHOICE **88c**

HALF GALLON



FRESH
SWEET CORN

8c

EAR

U.S. NO. 1 CALIFORNIA
SWEET JUICY NECTARINES

48c

LB.

VITA GOLD FROZEN LEMONADE

12-OZ. CANS

GRAPEFRUIT, APPLE OR
TROPICANA ORANGE JUICE

REFRIGERATED HALF GALLON

U.S. NO. 1
MICHIGAN BLUEBERRIES

549

LBS.

SWEET
RED RIPE WATERMELON

15c

BY THE PIECE LB.

WHOLE WATERMELON EA. 2.29

SNO-WHITE
FRESH MUSHROOMS

99c

LB.

FROZEN VAN DE KAMP PERCH 199	PEPPERIDGE FARM BLUEBERRY MUFFINS 149	GORTON'S CRUNCHY FISH STICKS 189	BANQUET FRIED CHICKEN 499	GREEN GIANT CHEESE SAUCE VEGETABLES 99c	PARKAY SOFT MARGARINE 79c	PARKAY LIGHT SPREAD 139
12-OZ.	11 1/2-OZ.	12-OZ.	3-LB. 12-OZ.	16-OZ.	1-LB.	2 LB.

CHATHAM

GIVES YOU MORE

GET THE LOWEST PRICES IN TOWN

WITH **Cash Dividend** SPECIALS

LOW OR LOWEST..

MOUNTAIN DEW, REGULAR & DIET PEPSI OR PEPSI FREE

8 HALF LITER BTL. **179**

PLUS DEPOSIT

Cash Dividend SPECIAL

MT. DEW, REGULAR & DIET PEPSI OR PEPSI FREE

8 HALF LITER BTL. **99c**

WITH 1 FILLED CASH DIVIDEND CERTIFICATE

LOW OR LOWEST..

CHUNK LIGHT BREAST O' CHICKEN TUNA

69c

IN OIL OR WATER 6 1/2-OZ. CAN

Cash Dividend SPECIAL

CHUNK LIGHT BREAST O' CHICKEN TUNA

9c

IN OIL OR WATER 6 1/2-OZ. CAN

WITH 1 FILLED CASH DIVIDEND CERTIFICATE

LOW OR LOWEST..

THICK RICH HUNT'S KETCHUP

2 LB. JUG **99c**

Cash Dividend SPECIAL

THICK RICH HUNT'S KETCHUP

2 LB. JUG **39c**

WITH 1 FILLED CASH DIVIDEND CERTIFICATE

LOW OR LOWEST..

ECONOMY SIZE OPEN PIT BARBECUE SAUCE

169

2-LB. 10-OZ. JAR

Cash Dividend SPECIAL

ECONOMY SIZE OPEN PIT BARBECUE SAUCE

99c

2-LB. 10-OZ. JAR

WITH 1 FILLED CASH DIVIDEND CERTIFICATE

LOW OR LOWEST..

FROZEN TREESWEET ORANGE JUICE

118

12-OZ. CAN

Cash Dividend SPECIAL

FROZEN TREESWEET ORANGE JUICE

58c

12-OZ. CAN

WITH 1 FILLED CASH DIVIDEND CERTIFICATE

LOW OR LOWEST..

BONNIE BRAND SLICED BACON

99c

1-LB. PKG.

Cash Dividend SPECIAL

BONNIE BRAND SLICED BACON

39c

1-LB. PKG.

WITH 1 FILLED CASH DIVIDEND CERTIFICATE

LOW OR LOWEST..

ALL GRINDS MAXWELL HOUSE COFFEE

2 LB. CAN **399**

Cash Dividend SPECIAL

ALL GRINDS MAXWELL HOUSE COFFEE

2 LB. CAN **333**

WITH 1 FILLED CASH DIVIDEND CERTIFICATE

LOW OR LOWEST..

WHITE OR ASSORTED NORTHERN TISSUE

4 ROLL PKG. **89c**

Cash Dividend SPECIAL

WHITE OR ASSORTED NORTHERN TISSUE

4 ROLL PKG. **49c**

WITH 1 FILLED CASH DIVIDEND CERTIFICATE

LOW OR LOWEST..

BREAKFAST OF CHAMPIONS WHEATIES CEREAL

12-OZ. BOX **99c**

Cash Dividend SPECIAL

BREAKFAST OF CHAMPIONS WHEATIES CEREAL

12-OZ. BOX **39c**

WITH 1 FILLED CASH DIVIDEND CERTIFICATE

LOW OR LOWEST..

KRAFT PHILADELPHIA CREAM CHEESE

8-OZ. PKG. **78c**

Cash Dividend SPECIAL

KRAFT PHILADELPHIA CREAM CHEESE

8-OZ. PKG. **29c**

WITH 1 FILLED CASH DIVIDEND CERTIFICATE

LOW OR LOWEST..

FROZEN COLE'S GARLIC BREAD

1-LB. LOAF **99c**

Cash Dividend SPECIAL

FROZEN COLE'S GARLIC BREAD

1-LB. LOAF **39c**

WITH 1 FILLED CASH DIVIDEND CERTIFICATE

LOW OR LOWEST..

HYGRADE BALL PARK MEAT FRANKS

1-LB. PKG. **169**

Cash Dividend SPECIAL

HYGRADE'S BALL PARK MEAT FRANKS

1-LB. PKG. **99c**

WITH 1 FILLED CASH DIVIDEND CERTIFICATE

LOW OR LOWEST..

ASSORTED FRESHLIKE VEGETABLES

12-OZ. TO 14-OZ. CAN **37c**

Cash Dividend SPECIAL

ASSORTED FRESHLIKE VEGETABLES

12-OZ. TO 14-OZ. CANS **19c**

WITH 1 FILLED CASH DIVIDEND CERTIFICATE

LOW OR LOWEST..

PLANTERS SNACKS CHEEZE BALLS or CURLS

9 1/4-OZ. **129**

Cash Dividend SPECIAL

PLANTERS SNACKS CHEEZE BALLS or CURLS

9 1/4-OZ. **69c**

WITH 1 FILLED CASH DIVIDEND CERTIFICATE

LOW OR LOWEST..

BETTY CROCKER SPECIALTY POTATOES

4 1/4-OZ. PKG. **69c**

Cash Dividend SPECIAL

BETTY CROCKER SPECIALTY POTATOES

4 1/4-OZ. PKG. **9c**

WITH 1 FILLED CASH DIVIDEND CERTIFICATE

LOW OR LOWEST..

IN DAIRY... EVERFRESH ORANGE JUICE

HALF GAL. **105**

Cash Dividend SPECIAL

IN DAIRY... EVERFRESH ORANGE JUICE

HALF GAL. **56c**

WITH 1 FILLED CASH DIVIDEND CERTIFICATE

LOW OR LOWEST..

MR. COFFEE COFFEE FILTERS

100 CT. **59c**

Cash Dividend SPECIAL

MR. COFFEE COFFEE FILTERS

100 CT. **1c**

WITH 1 FILLED CASH DIVIDEND CERTIFICATE

LOW OR LOWEST..

BUTCHER BOY SLICED BOILED HAM

1-LB. PKG. **199**

Cash Dividend SPECIAL

BUTCHER BOY SLICED BOILED HAM

1-LB. PKG. **139**

WITH 1 FILLED CASH DIVIDEND CERTIFICATE

LOW OR LOWEST..

CANNED FRANCO AMERICAN SPAGHETTI

14 1/2-OZ. CAN **39c**

Cash Dividend SPECIAL

CANNED FRANCO AMERICAN SPAGHETTI

14 1/2-OZ. CANS **19c**

WITH 1 FILLED CASH DIVIDEND CERTIFICATE

LOW OR LOWEST..

ASSORTED FLAVORS FRISKIES CAT FOOD

6 1/2-OZ. CAN **29c**

Cash Dividend SPECIAL

ASSORTED FLAVORS FRISKIES CAT FOOD

2 6 1/2-OZ. CANS **FREE**

WITH 1 FILLED CASH DIVIDEND CERTIFICATE

LOW OR LOWEST..

LIQUID DERMASSAGE DETERGENT

QT. BTL. **147**

Cash Dividend SPECIAL

LIQUID DERMASSAGE DETERGENT

QT. BTL. **89c**

WITH 1 FILLED CASH DIVIDEND CERTIFICATE

LOW OR LOWEST..

IN PRODUCE... YELLOW ONIONS

3 LBS. **129**

Cash Dividend SPECIAL

IN PRODUCE... YELLOW ONIONS

3 LBS. **69c**

WITH 1 FILLED CASH DIVIDEND CERTIFICATE

LOW OR LOWEST..

Q-TIP COTTON SWABS

204 CT. **97c**

Cash Dividend SPECIAL

Q-TIP COTTON SWABS

204 CT. **39c**

WITH 1 FILLED CASH DIVIDEND CERTIFICATE

LOW OR LOWEST..

SKIM, CHOCOLATE, BUTTERMILK or HOMOGENIZED BORDEN'S MILK

YOUR CHOICE HALF GALLON **88c**

Cash Dividend SPECIAL

SKIM, CHOCOLATE, BUTTERMILK or HOMOGENIZED BORDEN'S MILK

YOUR CHOICE HALF GALLON **28c**

WITH 1 FILLED CASH DIVIDEND CERTIFICATE

DOUBLE COUPON

ON ALL MANUFACTURER'S COUPONS

Coupons over 50¢ will be redeemed at face value. Amount to be refunded cannot exceed the cost of the coupon item. Limit 1 coupon for any 1 product. Retail store coupons & free coupons excluded.

CHATHAM

GIVES YOU MORE

PLUS
WEEKLONG...
**DOUBLE
COUPON**

Coupons over 50¢ will be redeemed at face value. Amount to be refunded cannot exceed the cost of the coupon item. Limit 1 coupon for any 1 product. Retail store coupons and free coupons excluded.

Fresh cut
CORN FED WESTERN BEEF

FRESH CUT BEEF BLADE
CHUCK STEAK
3 TO 6 LB. AVG. LB. **97¢** SOLD AS STEAK ONLY

Fresh cut
CORN FED WESTERN BEEF

FRESH CUT BEEF CHUCK
CENTER CUT
STEAK or ROAST
3 TO 6 LB. AVG. LB. **117** SOLD AS STEAK/ROAST ONLY

Fresh cut
CORN FED WESTERN BEEF

FRESH CUT BEEF ARM or ENGLISH
CHUCK ROAST
LB. **139** SOLD AS ROAST ONLY

Fresh cut
CORN FED WESTERN BEEF

HAMBURGER MADE FROM...
GROUND CHUCK
3 TO 6 LB. AVG. LB. **148**
BUTTERNUT BARBECUE BUNS 12 CT PKG **69¢**

KENTUCKY BRAND
SLICED BACON
12-OZ. PKG. **99¢**

<p>Fresh cut CORN FED WESTERN BEEF</p> <p>FRESH! COUNTRY PRIDE, U.S. GRADE A CHICKEN WINGS or THIGHS 3 TO 5 LB. AVG. LB. 77¢</p>	<p>Fresh cut CORN FED WESTERN BEEF</p> <p>FRESH CUT, BEEF BONELESS CUBED STEAK 3 TO 6 LB. AVG. LB. 249</p>	<p>Fresh cut CORN FED WESTERN BEEF</p> <p>FRESH CUT BEEF BONELESS BEEF STEW 3 TO 6 LB. AVG. LB. 197</p>
<p>Fresh cut CORN FED WESTERN BEEF</p> <p>FRESH CUT BEEF ROUND BONE SWISS STEAK 3 TO 6 LB. AVG. LB. 158</p>	<p>GOV'T INSPECTED FRESH PORK STEAK 3 TO 6 LB. AVG. LB. 148</p>	<p>PATRICK CUDAHY CANNED HAM 5 LB. TIN 799</p>

HOME OF VARIETY, FRESHNESS & VALUE

TENDER TASTY ROAST BEEF LB. 399	ECKRICH OLD FASHION LOAF LB. 269	BAVARIAN SLICED HAM LB. 399	Fresh Italian or Polish Sausage LB. 1.99 Creamy Cole Slaw LB. 88¢
---	--	--	--

GRAND PRIX VEAL SHOULDER BLADE ROAST LB. 198	GRAND PRIX VEAL SHOULDER ROUND BONE CHOPS LB. 248	GRAND PRIX VEAL SHOULDER BLADE CHOPS LB. 228	SALAY'S NATURAL CASING VIENNA WEINERS LB. 199
--	---	--	---

<p>KODAK 110-124 COLOR FILM 239</p>	<p>4-PACK O-CEL-O SPONGES 39¢</p>	<p>SCRIPTO MIGHTY MATCH DISPOSABLE LIGHTER 39¢</p>
---	---	--

GAUDINO BRAND ITALIAN, POLISH or LINK PORK SAUSAGE LB. 188	AGAR CANNED HAM PATTIES LB. 188	HYGRADE BALLPARK MEAT FRANKS (BEEF 1.89) LB. 169	FRESH FISH SPECIALS...	DRESSED WHITE FISH LB. 159	FARM RAISED CAT FISH LB. 239
--	---	---	-------------------------------	--	--

PRICES EFFECTIVE AUG. 10 THRU 6 P.M. AUG. 16, 1983.

THORN APPLE VALLEY VALUES

THORN APPLE VALLEY SLICED BACON 12-OZ. PKG. 139	THORN APPLE VALLEY SMOKED BEEF or POLISH SAUSAGE LB. 197	FULLY COOKED SMOKED BONELESS HAM STEAK LB. 249	THICK SLICED BACON CHUNK BRAUNSCHWEIGER or LIVERWURST CHICKEN HOT DOGS or SLICED CHICKEN BOLOGNA SLICED BOLOGNA REG/BEEF SALAMI or COMBO PARTY ASSORTMENT 1-LB. 4-OZ. 2.99 LB. 1.79 LB. 1.29 LB. 2.59	LUNCHEON ASSORTMENT MEAT HOT DOGS (BEEF 1.89) SLICED COOKED HAM SMOKED BEEF or POLISH SAUSAGE CHEESE HOT DOGS 12-OZ. 2.29 LB. 1.79 8-OZ. 1.69 LB. 2.59 LB. 2.19
---	--	--	--	--

More back-to-school values that work!



Save 29% on girls' Famous name tee-shirts!

4.97

Girls' Tropical Tees! Perfect for back to school and at such a perfect price! She'll make the transition back easily for under 5.00! Round neck and cap sleeves in lots of tropical prints. Polyester/cotton knit. Girls' sizes 7-14. Reg. 7.00 ea.



Boys' Reg. 4.94 **3.99**
Tube Socks 5 pr. pkg. 6-8 or 8-11. Men's 10-14, reg. 5.84, **4.87**



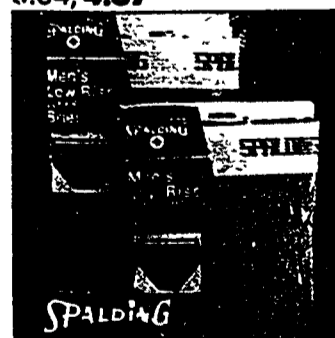
2 PKGS. 1.00
Save 48%! **Maverick Poker Cards** Plastic coated. Reg. .97 ea.



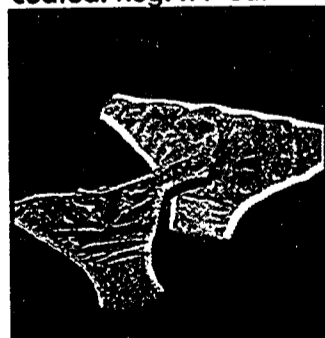
.67 pkg.
Save 31%! **Solo Party Cups** Sturdy plastic. 16 oz. 20 ct. Reg. .97



.77 pkg.
Save 31%! **Solo Party Cups** Sturdy plastic. 16 oz. 20 ct. Reg. .97



2.27
Save 24%! **Spalding Men's Underwear*** 100% cotton. S-XL. Reg. 2.99
*See store for 1.50 refund offer details.



.66
Save 32%! **Ladies' Bikini Underwear** 100% nylon. Sizes 5-6-7. Reg. .97



8.88
Igloo Little Playmate Sturdy molded plastic holds 9, 12 oz. cans. Reg. 10.44



Save 30%! **Wilson Championship Tennis Balls Yellow**, 3 per can. Reg. 2.37. Limit 3 cans **1.66**

We're Working Harder...

Shop 9 a.m.-9 p.m. Weekdays, 12-6 p.m. Sunday

TG&Y Family Centers

...To Save You More!

Sale Ends Saturday

These advertised specials are honored only at your larger TG&Y Family Centers. Shop our smaller TG&Y Variety Stores for other convenient specials.

Save up to 29% on name brand favorites!



A complete back to school outfit for under 20.00!

Your choice...

9.97

Rustler® Jeans!

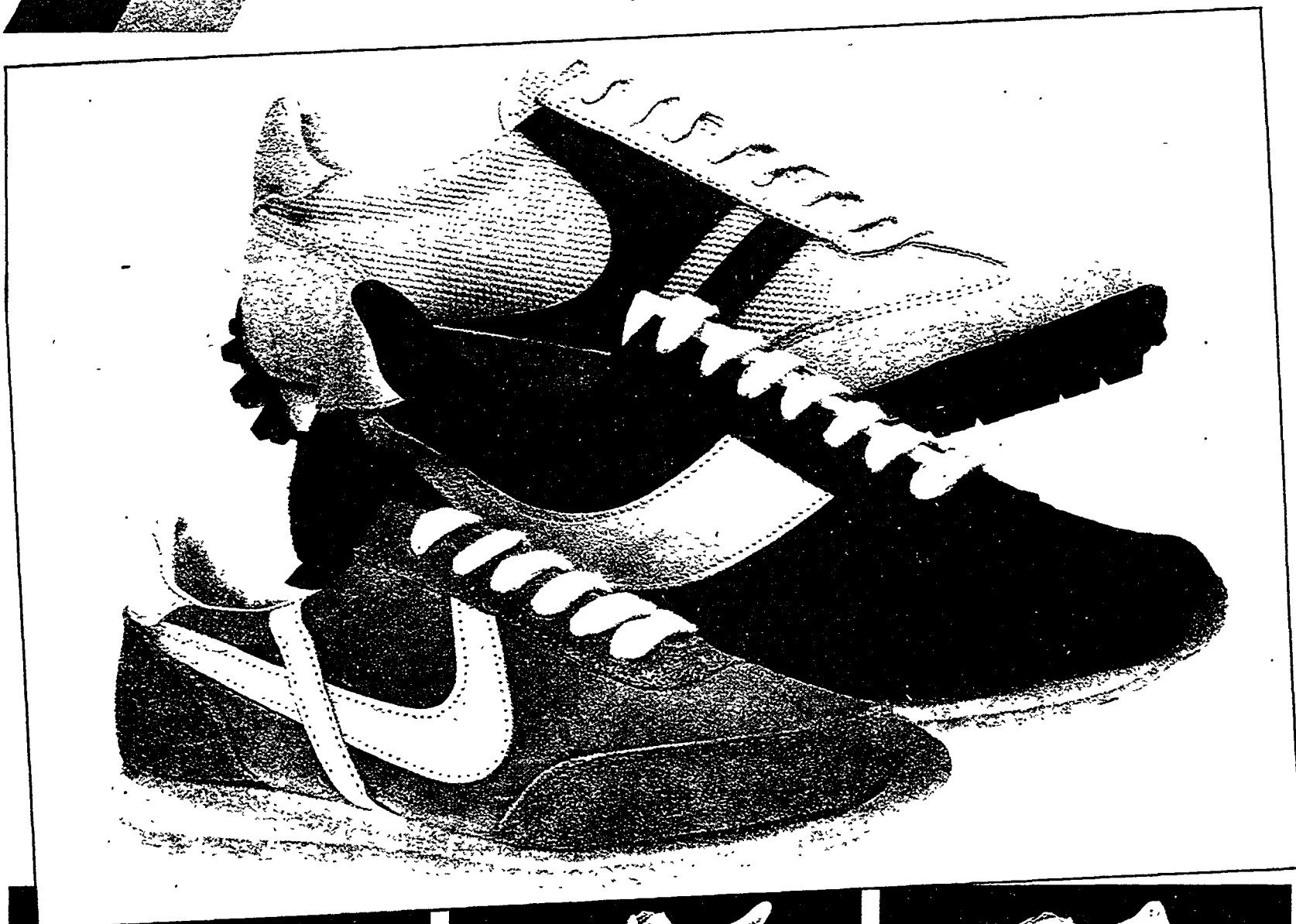
Save 4.00! Rustler® Junior Jeans from the Makers of Wrangler® Jeans Only 9.97! What a great low price! Now you can buy several pairs for back to school. Proportioned fit designed especially for your junior figure. 75% polyester/25% cotton, white denim. Junior sizes 5-15. Reg. 13.97 pr.

Famous Maker and Designer Label Tops!

Save 2.00! Ladies' Knit Tops Cool, comfortable and casual! Plus, fabulous famous maker and designer quality for under 10.00! We've got a great selection of styles from ¾ to short sleeves, boat to scoop to v-necks and all in lots of stripes, solids and color combos. 100% cotton or polyester/cotton blends. Sizes S-M-L. Reg. 11.97 ea.



Save 25% to 38% on shoes for school!



Your choice...

9.97

Men's or Boys' Nylon Jogger

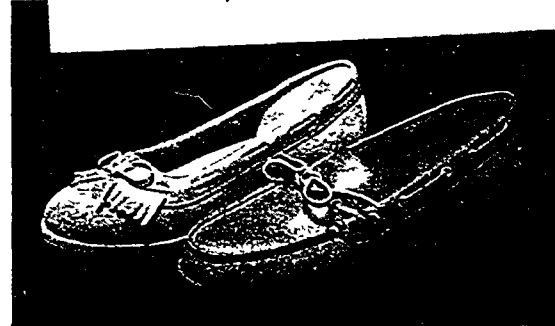
Save 6.00! White or grey mesh upper with natural genuine suede trim and black side design. Arch support. Men's sizes 6½-12. Boys' sizes 2½-6. Reg. 15.97 pr.

Men's Nylon Jogger

Save 4.00! Navy blue nylon with genuine suede navy trim and gold side design. Cushion insole with arch support and athletic outsole. Sizes 6½-12. Reg. 13.97 pr.

Ladies' Nylon Jogger

Save 4.00! Powder blue nylon with matching suede trim and white side design. Cushion insole and athletic outsole. Sizes 5-10. Reg. 13.97 pr.



Save 2.00 or 3.00!

7.97

Jr. or Ladies' Casual Leather-like tan, genuine leather lace. Reg. 9.97 pr. Tan suede with kiltie. Reg. 10.97 pr. Sizes 5-10.



Save 3.00!

8.97

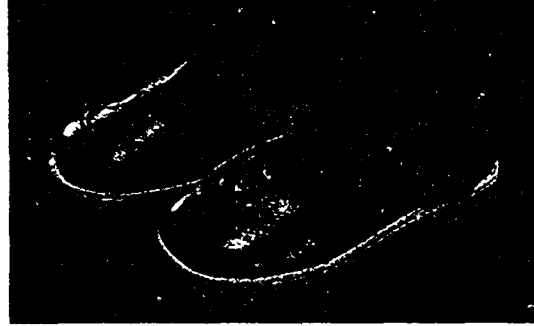
Ladies' Athletic Shoe White vinyl with red side design. Cushion insole. Sizes 5-10. Reg. 11.97 pr.



Save 4.00!

8.97

Big Girls' Athletic Shoe Lavender nylon/suede, hook/loop closure. Sizes 12-4. Reg. 12.97 pr.



Save 3.00!

4.97

Little Girls' T-Strap Navy with white stitch design, silver buckle. Sizes 5-10. Reg. 7.97 pr.



Save 3.02!

7.97

Youths' Hi-Cut Walkaby Boot Sand color suede with vinyl top binding, cushion insole. Sizes 11-2. Reg. 10.99 pr.



Save 3.00!

4.97

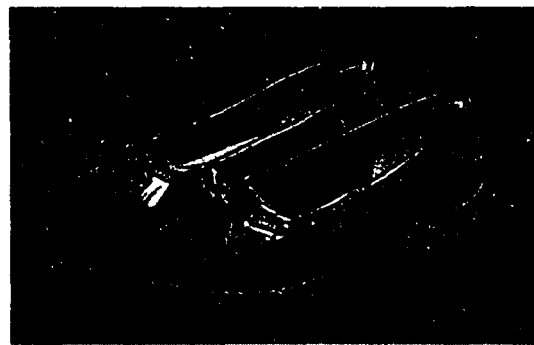
Little Gents' Oxford Brown with saddle overlay and white stitching. Sizes 5-10. Reg. 7.97 pr.



Save 3.18!

7.79

Youths' Athletic Shoe Royal blue nylon/suede with white side stripes. Sizes 11-2. Reg. 10.97 pr.

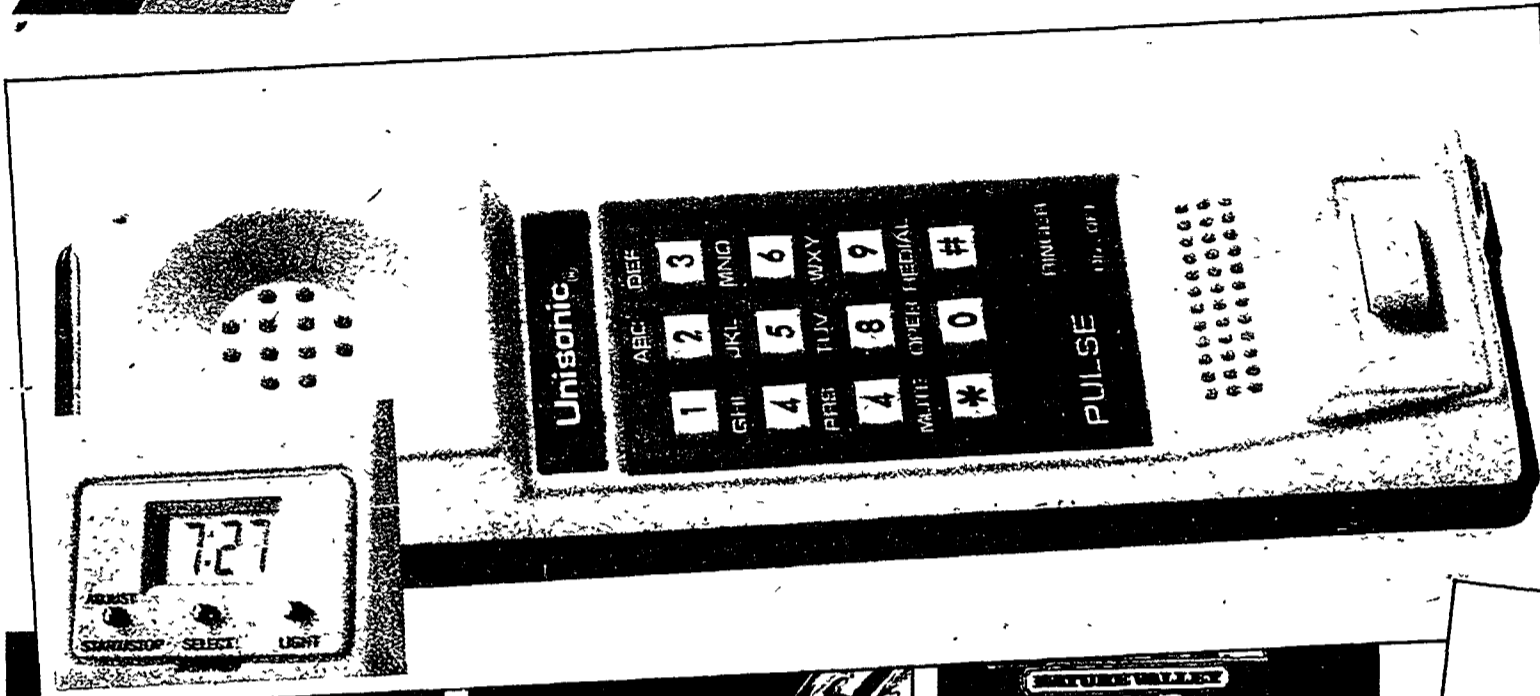


Save 3.00!

6.97

Big Girls' Suede Casuals English toast color with camel kilt. Flexible sole. Sizes 11-3. Reg. 9.97 pr.

Values that work harder for you!



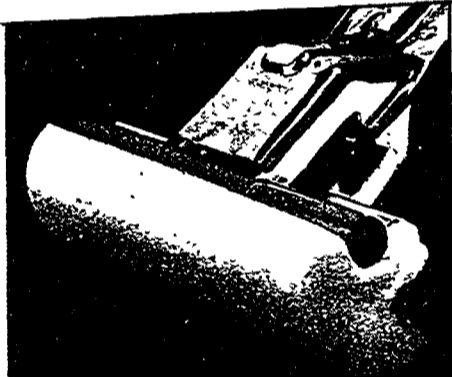
Save 4.00 on this
Unisonic Phone with Clock!

17.96

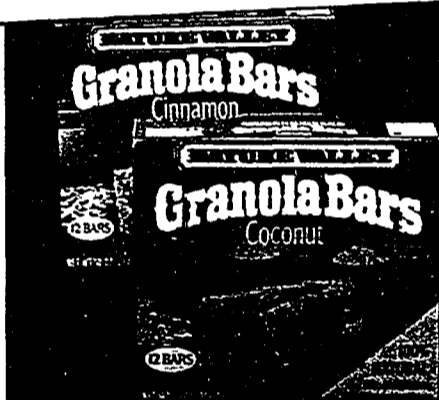
Unisonic Telephone with Built-in Clock An electronic push button with last number redial, mute key, LED in-use indicator, plus an LCD timepiece with a stop watch! FCC approved. #TP-6005. Reg. 21.96



4 PKGS. 1.00
Everyday Gift Wrap Ass't'd. designs. 2 sheets per pkg. 8.3 sq. ft.



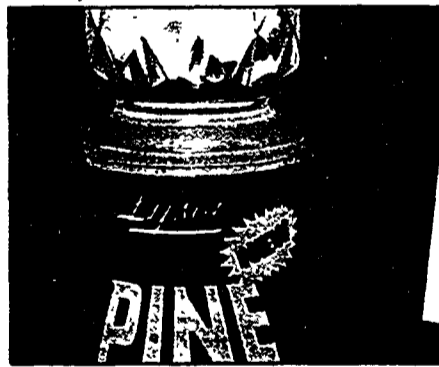
2.47
Wringer Sponge Mop Wringer handle and changeable mophead.



1.36
Nature Valley Granola Bar 12 bars, total 10 oz. box.



2 FOR 5.00
Cane Plastic Accent Table Brown, almond or white. 15x18".



1.77
Lysol Pine Action Cleaner Cleans and disinfects. 28 fl. oz.



Anti-Freeze/Anti-Boil An overheating engine is no fun! 1 gallon.

2.76

We're Working Harder...

TG&Y Family Centers

... To Save You More!

Most advertised items are reduced from our everyday low prices. And upon their purchase, TG&Y insists upon your satisfaction. If you are not happy with what you bought, return it. We will cheerfully exchange it or fully refund your money. If for unforeseen reasons advertised merchandise is not available, we'll gladly issue a raincheck. We're happy to accept your personal check, MasterCard, Visa or cash. **We want you to be glad you shopped TG&Y. Items available at TG&Y Family Centers only.**

These advertised specials are honored only at your larger TG&Y Family Centers. Shop our smaller TG&Y Variety Stores for other convenient specials!